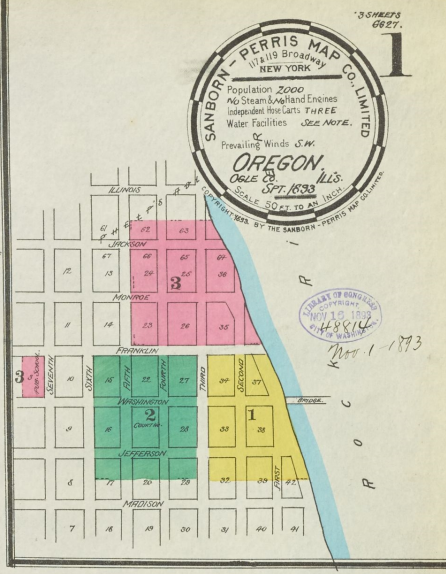
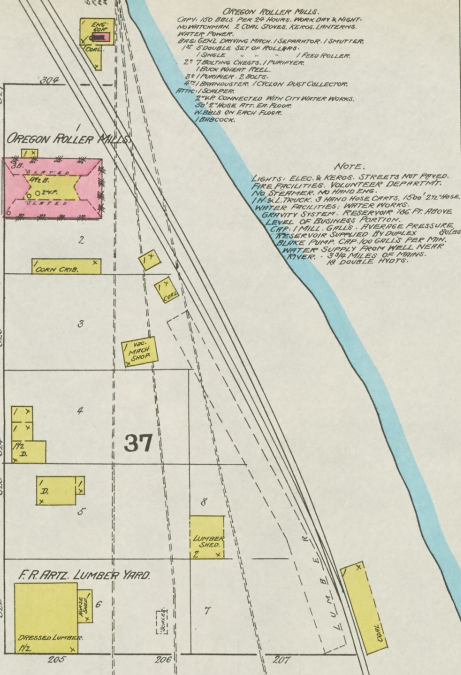
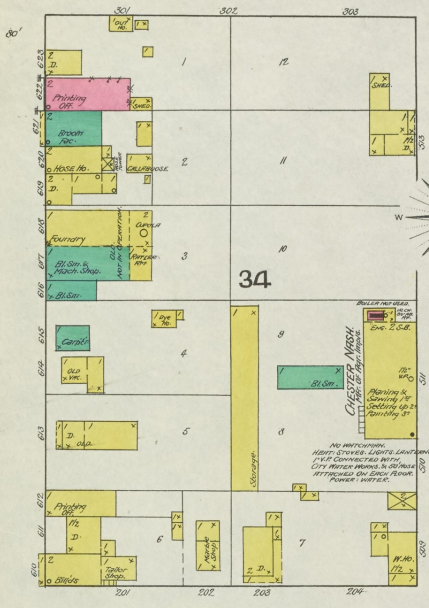


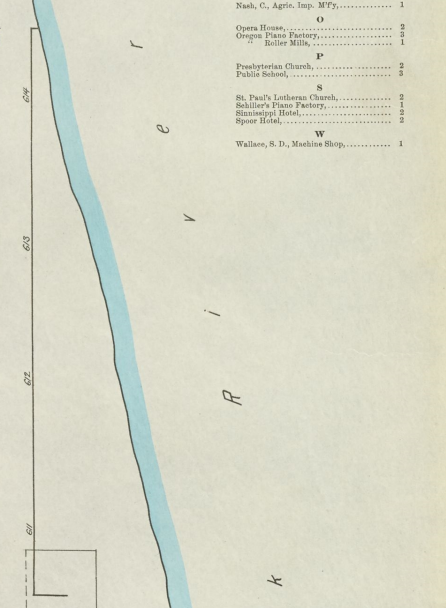
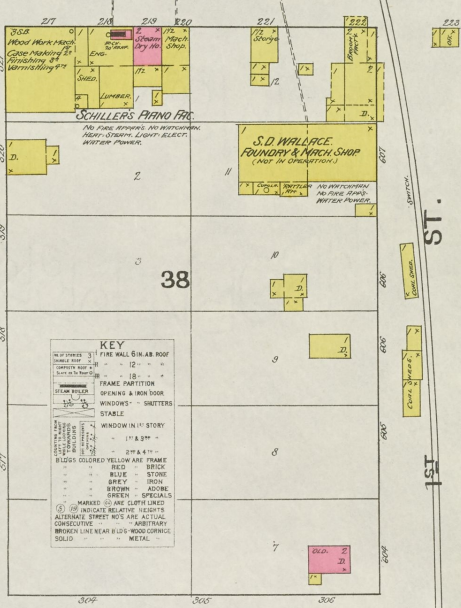
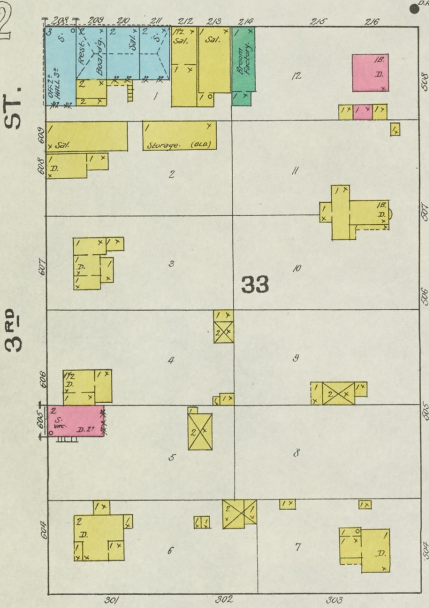
FRANKLIN 3



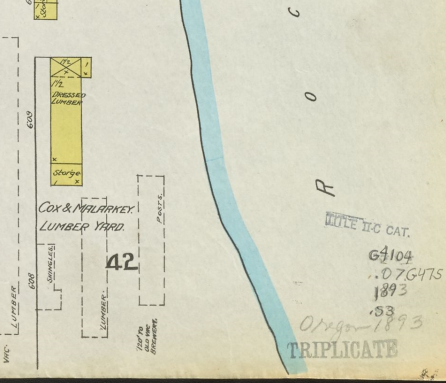
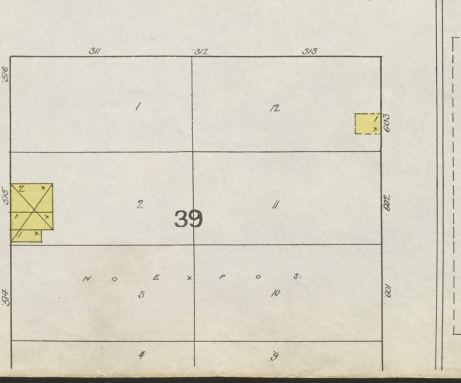
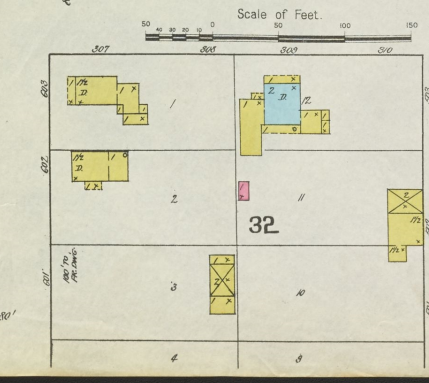
INDEX.

SPECIALS.	INDEX
Arts, F. H., Lumber Yard.....	1
Catholic Church.....	2
County Court House.....	1
Cox & Maloney, Lumber.....	1
Douglas & Stewart, Elevator.....	3
First M. E. Church.....	2
Nash, C., Agric. Imp. M.F.Y.....	1
Opera House.....	2
Oregon Piano Factory.....	1
Public Mills.....	2
Presbyterian Church.....	2
Public School.....	2
St. Paul's Lutheran Church.....	2
Schiller's Piano Factory.....	2
Shinnestri Hotel.....	2
Spoon Bridge.....	1
Wallace, S. D., Machine Shop.....	1

WASHINGTON



JEFFERSON

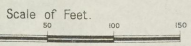


JEFFERSON

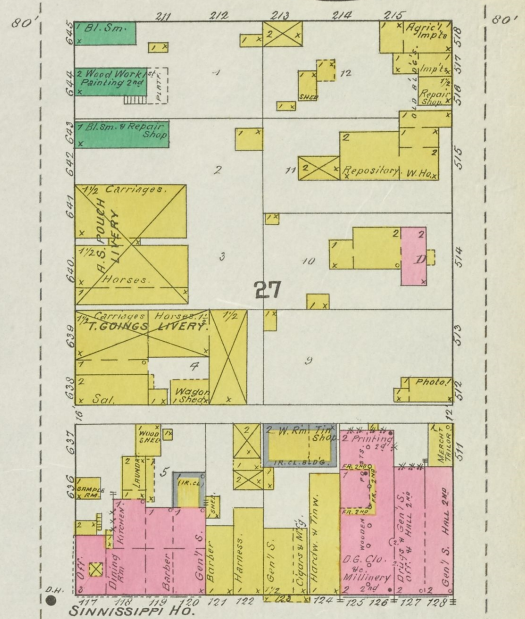
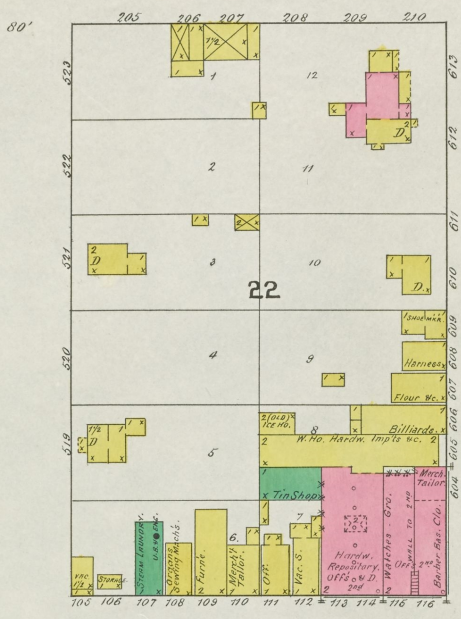
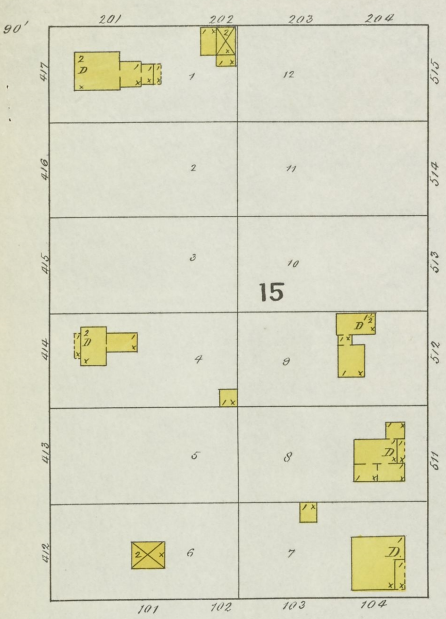
MILE 110 CAT.
 64104
 .076475
 1893
 1893
 TRIPLICATE

KEY

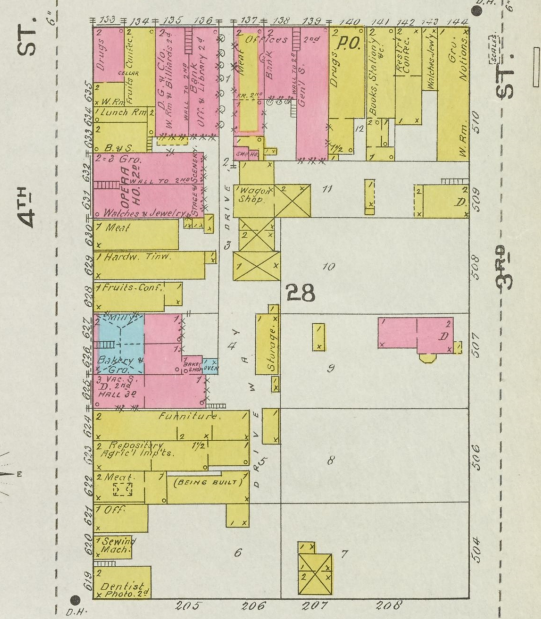
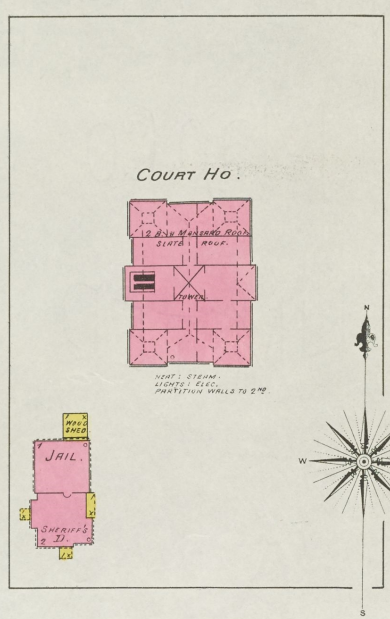
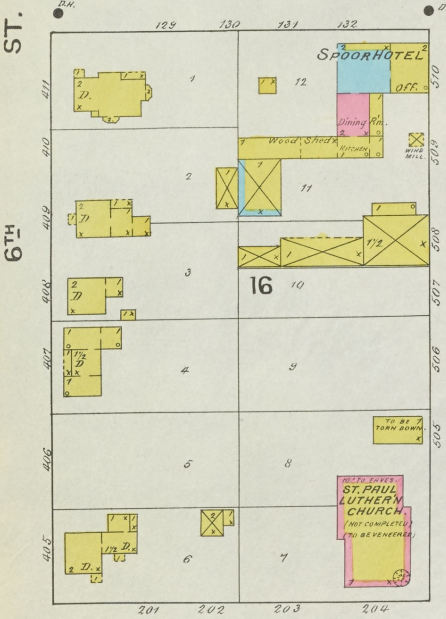
NO. 1001	FIRE WALL BIRCH ROOF
NO. 1002	FRAME PARTITION
NO. 1003	FRAMES
NO. 1004	FRAMES
NO. 1005	FRAMES
NO. 1006	FRAMES
NO. 1007	FRAMES
NO. 1008	FRAMES
NO. 1009	FRAMES
NO. 1010	FRAMES
NO. 1011	FRAMES
NO. 1012	FRAMES
NO. 1013	FRAMES
NO. 1014	FRAMES
NO. 1015	FRAMES
NO. 1016	FRAMES
NO. 1017	FRAMES
NO. 1018	FRAMES
NO. 1019	FRAMES
NO. 1020	FRAMES
NO. 1021	FRAMES
NO. 1022	FRAMES
NO. 1023	FRAMES
NO. 1024	FRAMES
NO. 1025	FRAMES
NO. 1026	FRAMES
NO. 1027	FRAMES
NO. 1028	FRAMES
NO. 1029	FRAMES
NO. 1030	FRAMES
NO. 1031	FRAMES
NO. 1032	FRAMES
NO. 1033	FRAMES
NO. 1034	FRAMES
NO. 1035	FRAMES
NO. 1036	FRAMES
NO. 1037	FRAMES
NO. 1038	FRAMES
NO. 1039	FRAMES
NO. 1040	FRAMES
NO. 1041	FRAMES
NO. 1042	FRAMES
NO. 1043	FRAMES
NO. 1044	FRAMES
NO. 1045	FRAMES
NO. 1046	FRAMES
NO. 1047	FRAMES
NO. 1048	FRAMES
NO. 1049	FRAMES
NO. 1050	FRAMES
NO. 1051	FRAMES
NO. 1052	FRAMES
NO. 1053	FRAMES
NO. 1054	FRAMES
NO. 1055	FRAMES
NO. 1056	FRAMES
NO. 1057	FRAMES
NO. 1058	FRAMES
NO. 1059	FRAMES
NO. 1060	FRAMES
NO. 1061	FRAMES
NO. 1062	FRAMES
NO. 1063	FRAMES
NO. 1064	FRAMES
NO. 1065	FRAMES
NO. 1066	FRAMES
NO. 1067	FRAMES
NO. 1068	FRAMES
NO. 1069	FRAMES
NO. 1070	FRAMES
NO. 1071	FRAMES
NO. 1072	FRAMES
NO. 1073	FRAMES
NO. 1074	FRAMES
NO. 1075	FRAMES
NO. 1076	FRAMES
NO. 1077	FRAMES
NO. 1078	FRAMES
NO. 1079	FRAMES
NO. 1080	FRAMES
NO. 1081	FRAMES
NO. 1082	FRAMES
NO. 1083	FRAMES
NO. 1084	FRAMES
NO. 1085	FRAMES
NO. 1086	FRAMES
NO. 1087	FRAMES
NO. 1088	FRAMES
NO. 1089	FRAMES
NO. 1090	FRAMES
NO. 1091	FRAMES
NO. 1092	FRAMES
NO. 1093	FRAMES
NO. 1094	FRAMES
NO. 1095	FRAMES
NO. 1096	FRAMES
NO. 1097	FRAMES
NO. 1098	FRAMES
NO. 1099	FRAMES
NO. 1100	FRAMES



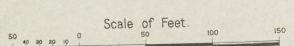
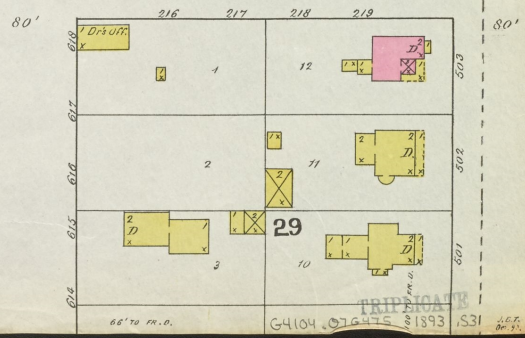
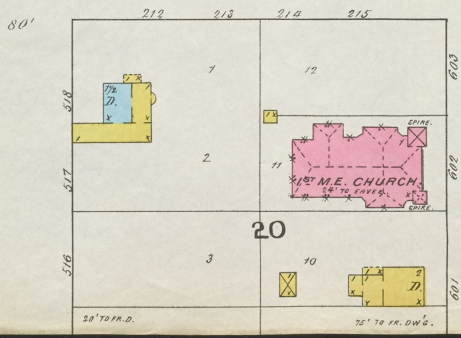
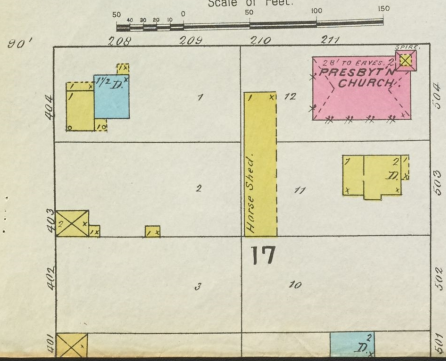
FRANKLIN

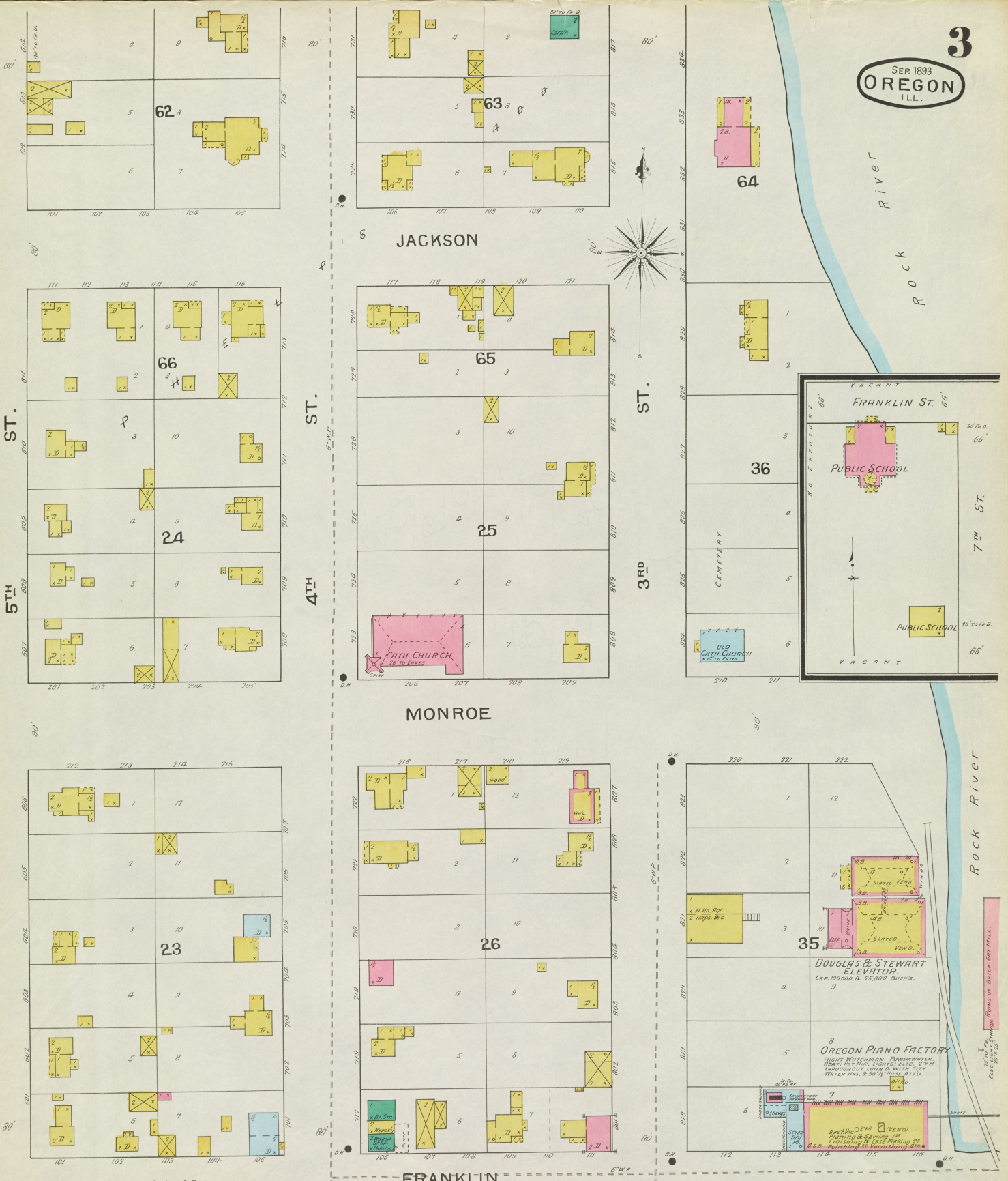


WASHINGTON

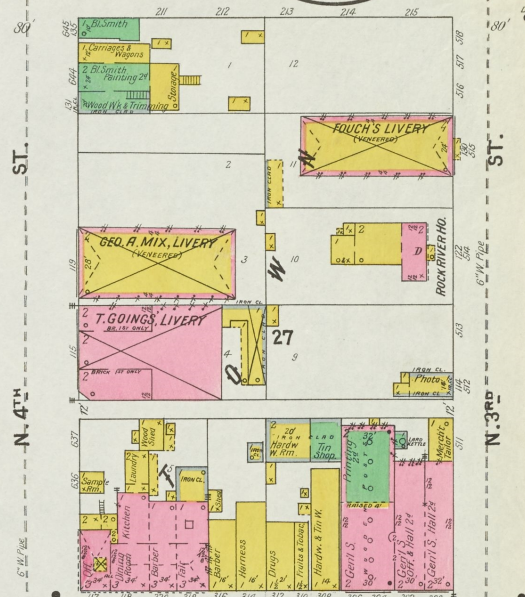
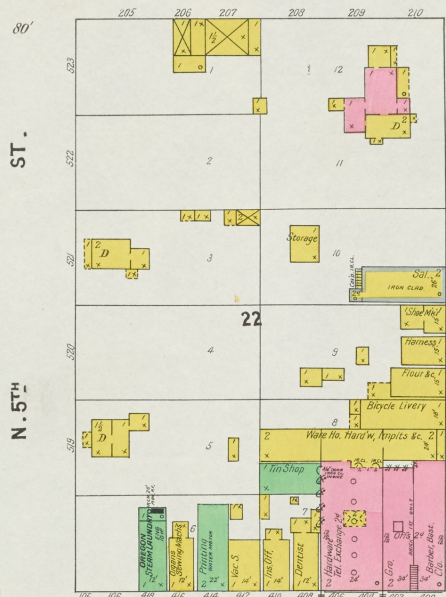
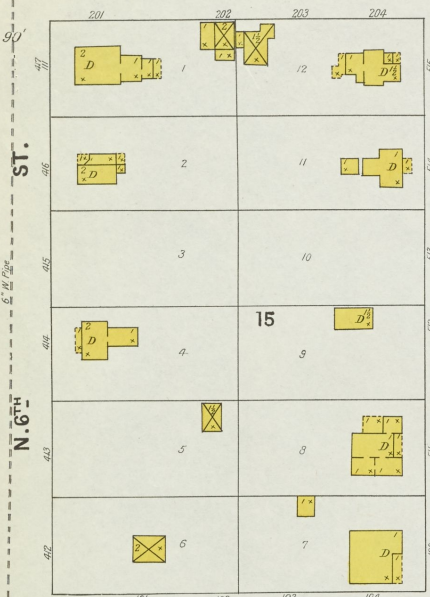


JEFFERSON

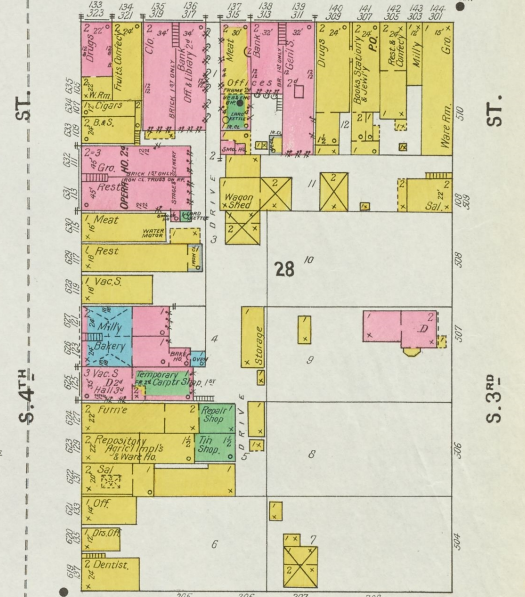
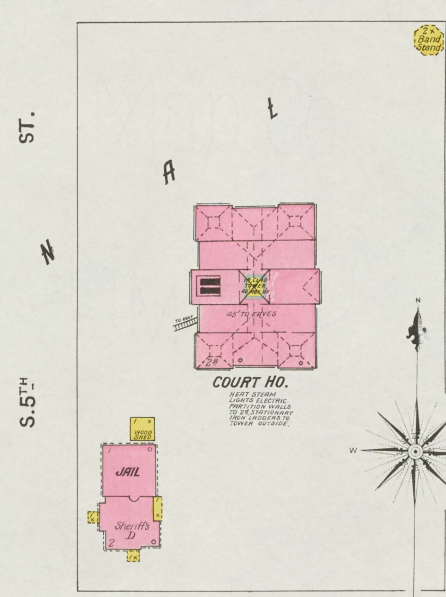
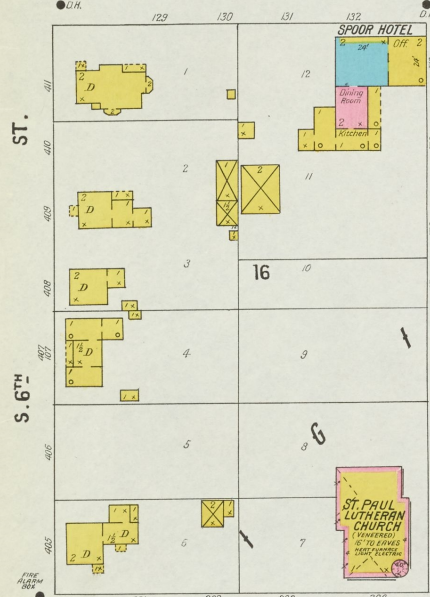




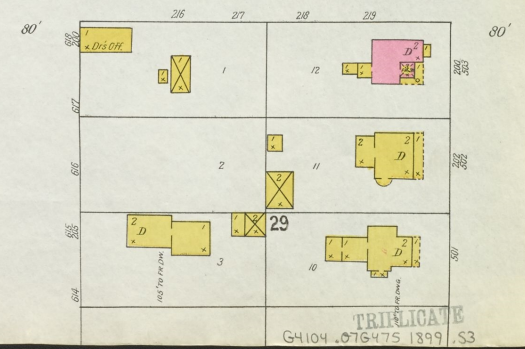
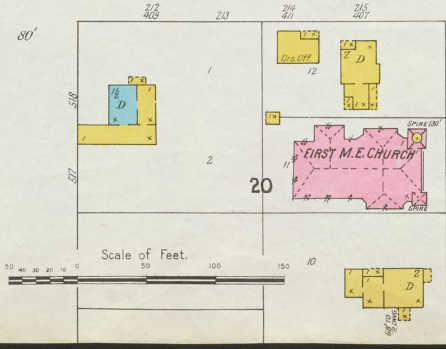
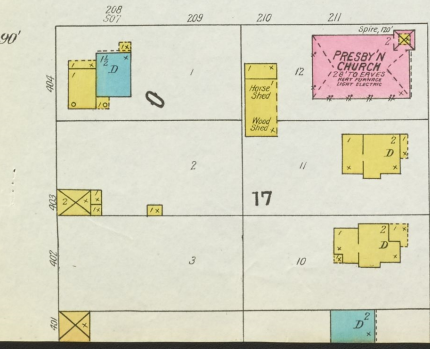
FRANKLIN

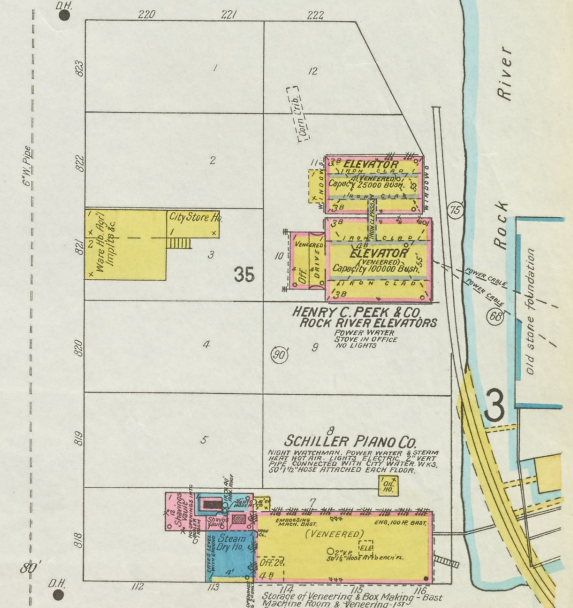
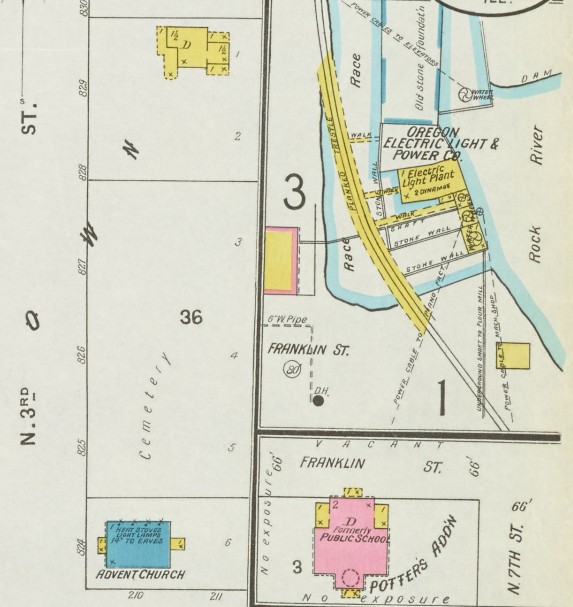
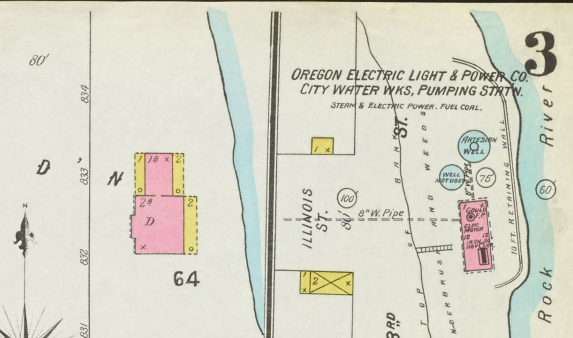
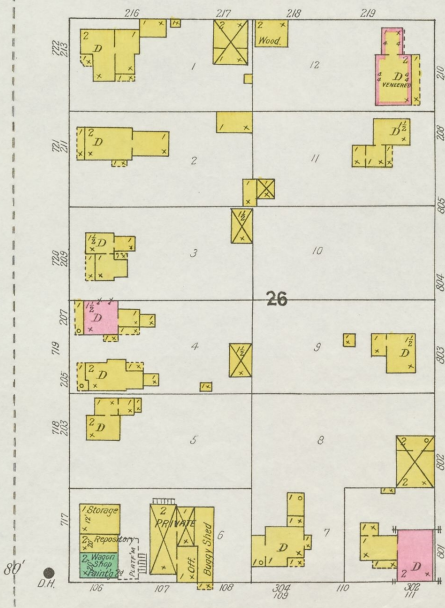
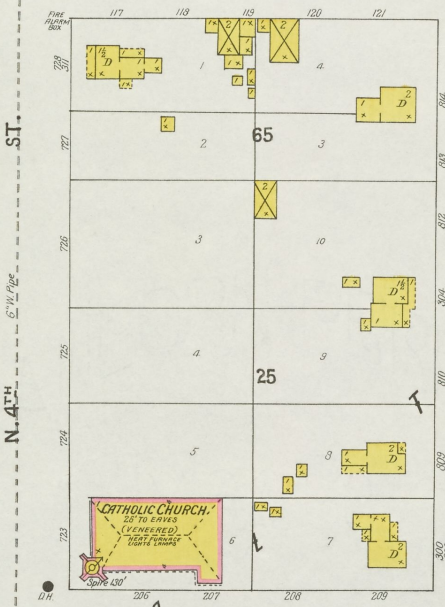
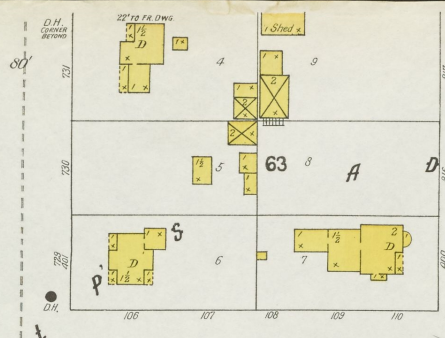
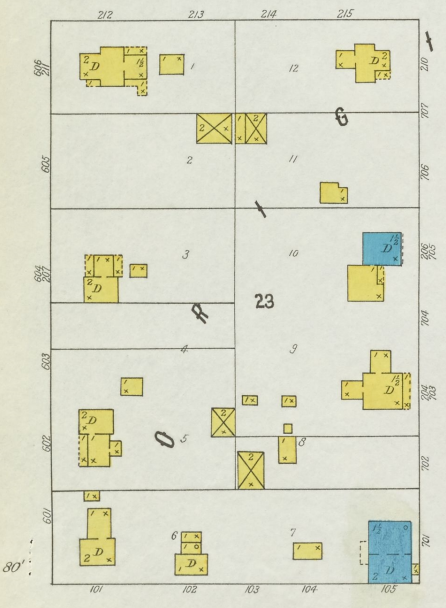
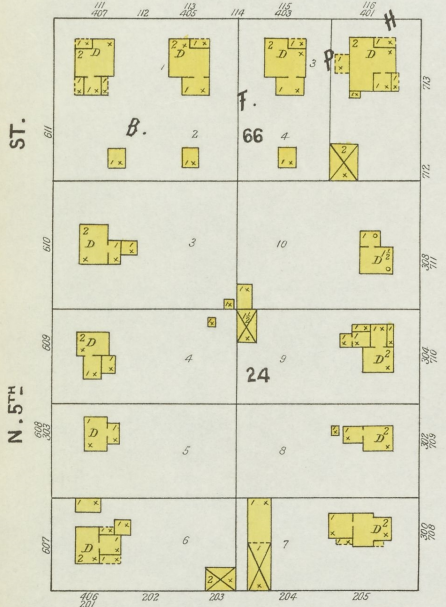
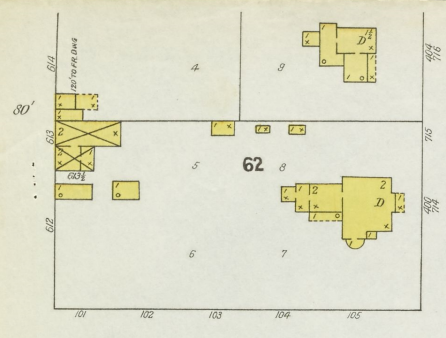


WASHINGTON



JEFFERSON



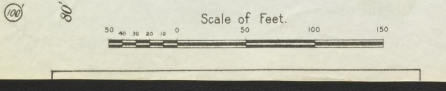


OREGON ELECTRIC LIGHT & POWER CO.
CITY WATER WKS., PUMPING STATION,
STEAM & ELECTRIC POWER, FUEL COAL.

ILLINOIS ST.
N. 3RD ST.
AUG. 1899
OREGON ILL.

OREGON ELECTRIC LIGHT & POWER CO.
ELECTRIC LIGHT PLANT
STAMP MILL
ESTATE WALL
FRANKLIN ST.
POTTERS ADDN
N. 7TH ST.

ELEVATOR
Capacity 55000 Bushels
ELEVATOR
Capacity 55000 Bushels
HENRY C. PECK & CO.
ROCK RIVER ELEVATORS
POWER WATER
OFFICE IN OFFICE
NO LIGHTS
SCHILLER PIANO CO.
1125 WESTERN AVENUE
HERE ARE THE LIGHTS OF OREGON, BY THE
FINEST CONNECTED WORKS OF THE
500 YD. HOSE ATTACHED EACH FLOOR.

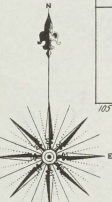
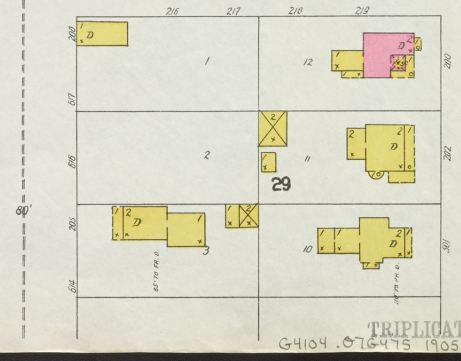
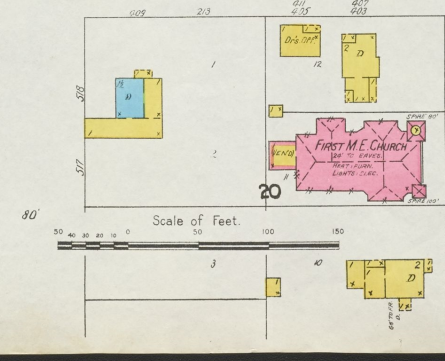
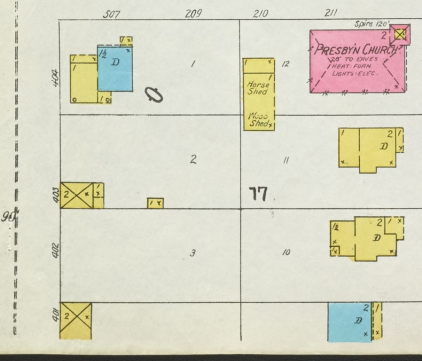
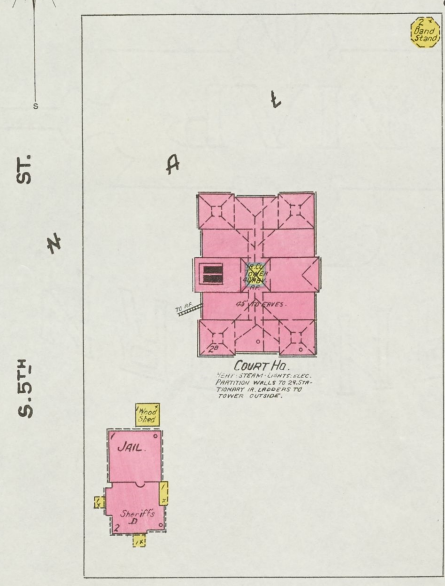
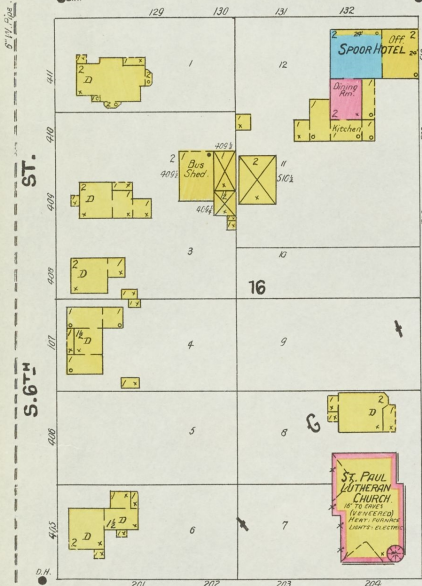
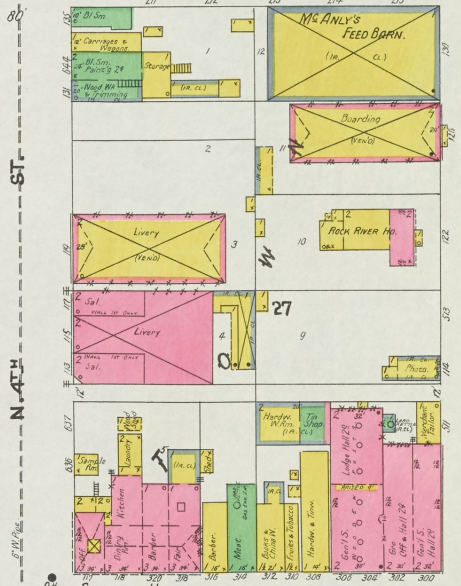
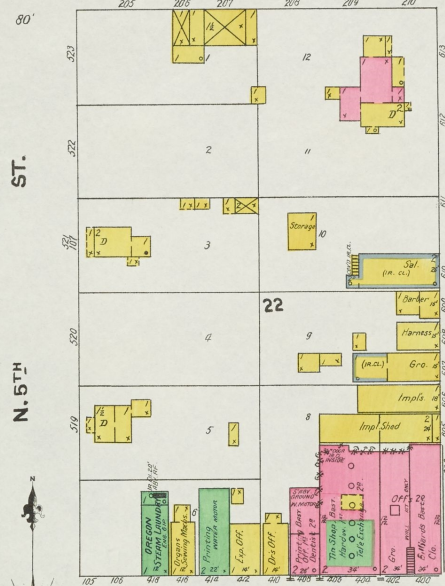
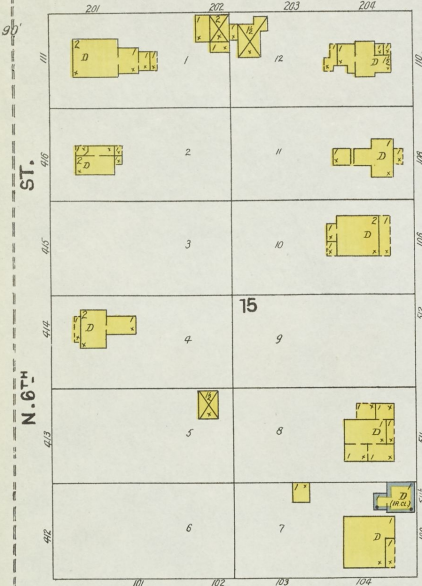


JAN. 1905
OREGON
ILL.

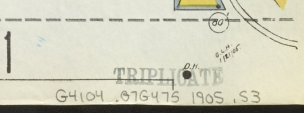
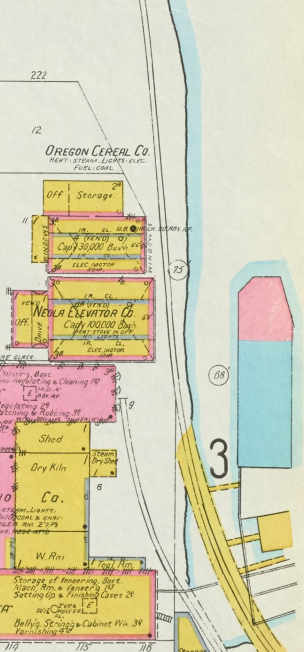
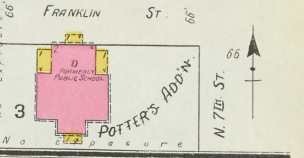
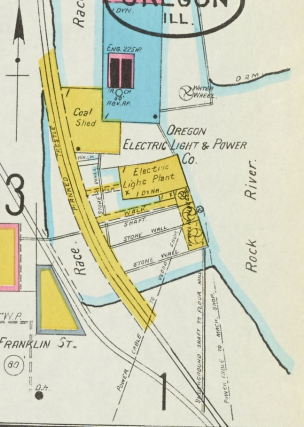
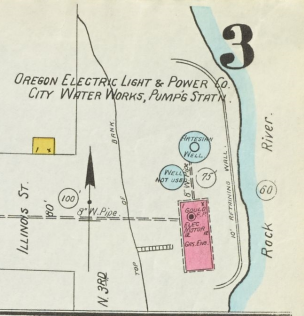
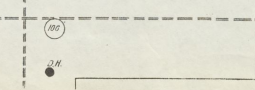
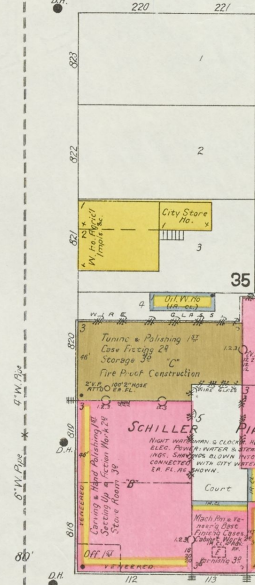
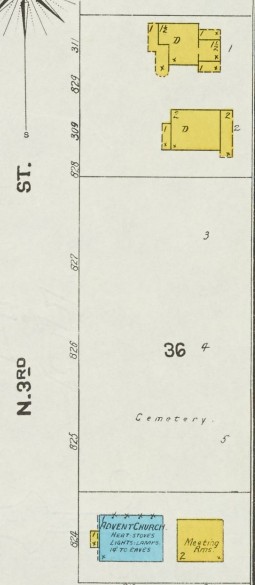
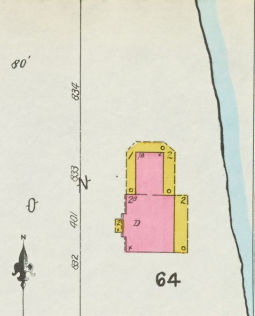
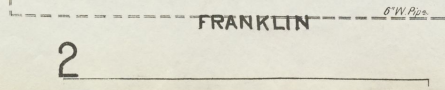
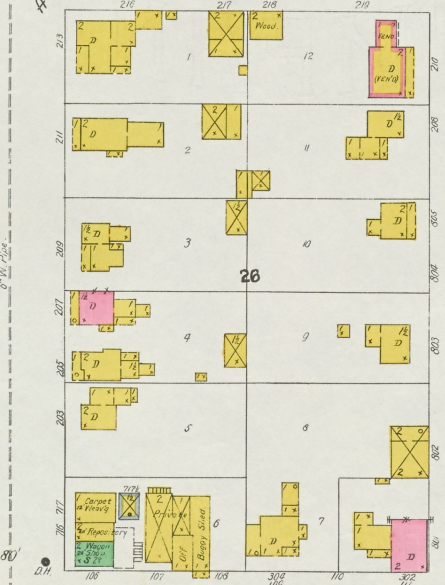
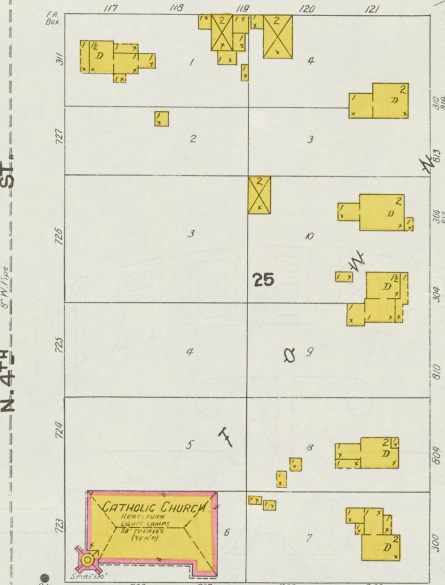
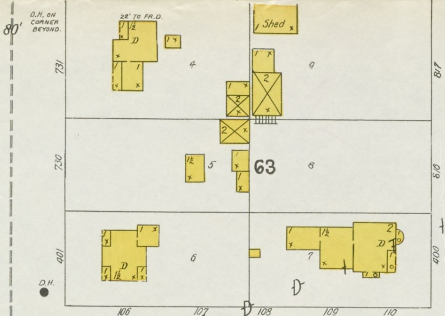
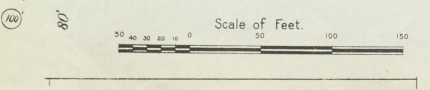
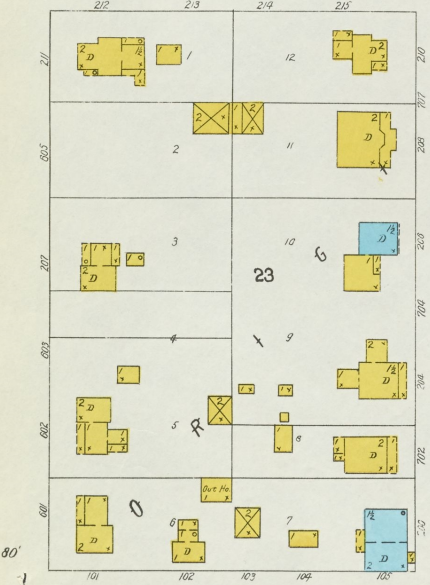
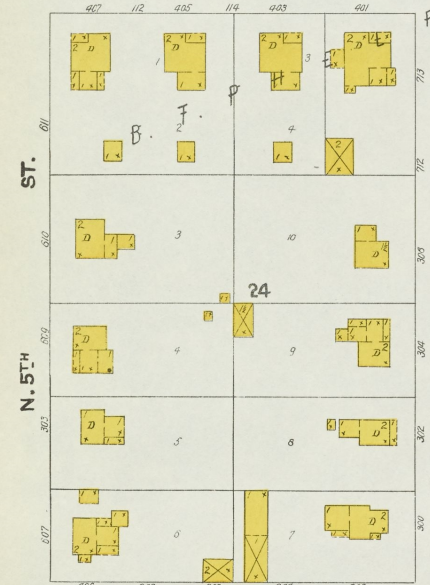
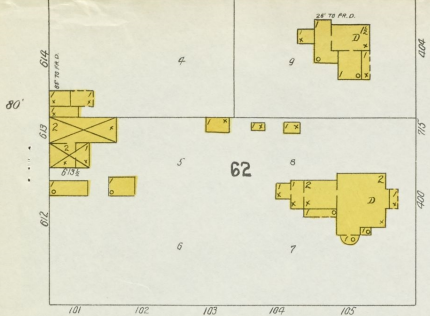
FRANKLIN

WASHINGTON

JEFFERSON



Scale of Feet.



JACKSON

MONROE

FRANKLIN

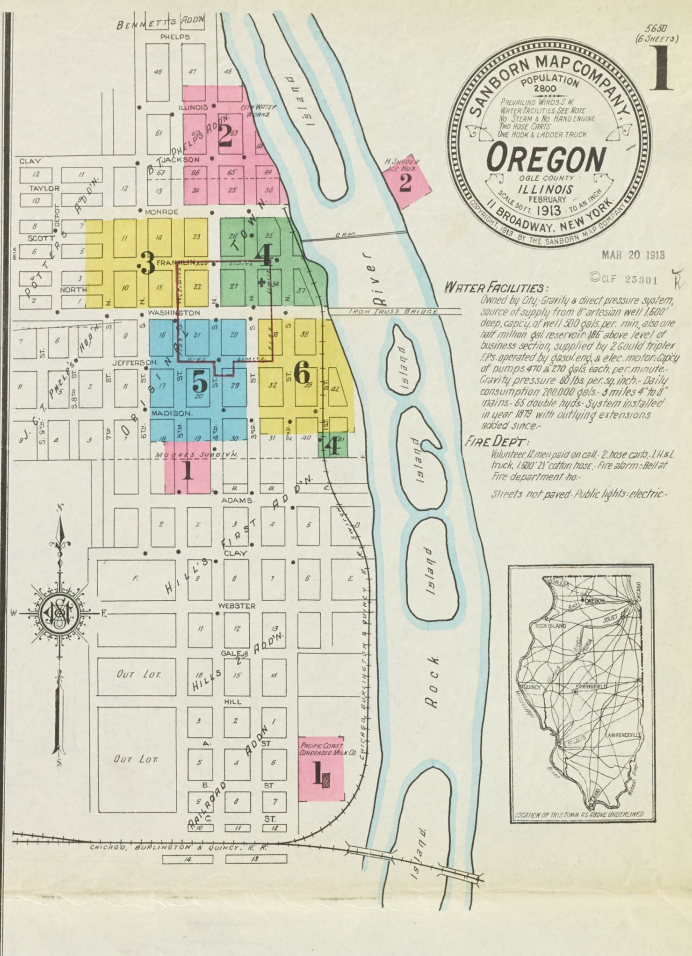
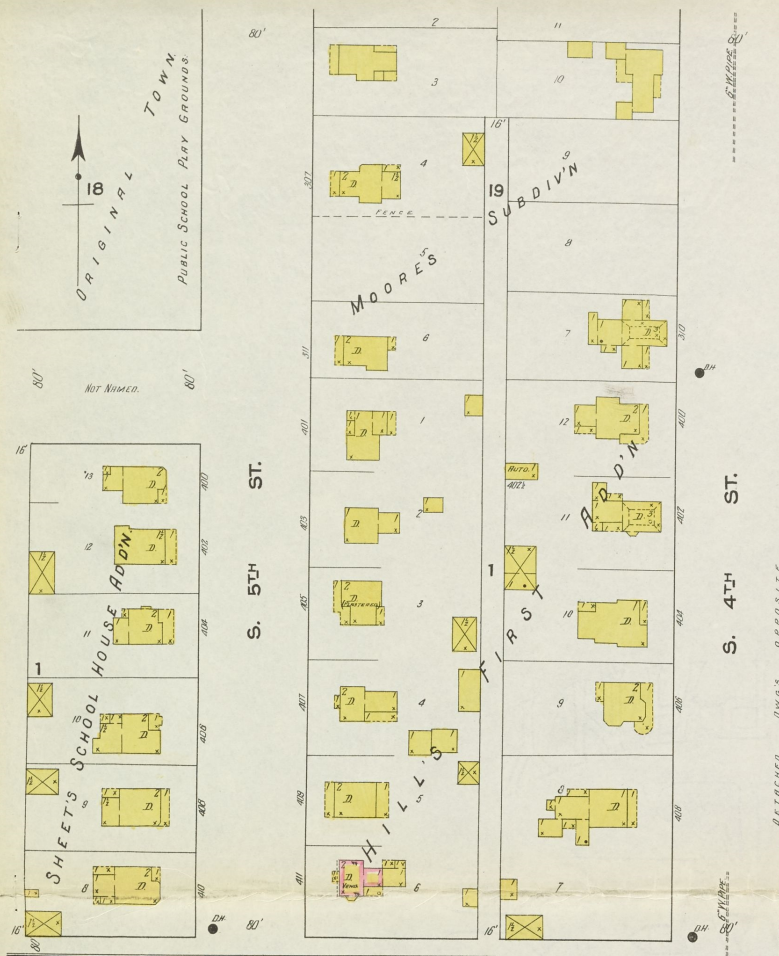
N. 5TH ST.

N. 4TH ST.

N. 3RD ST.

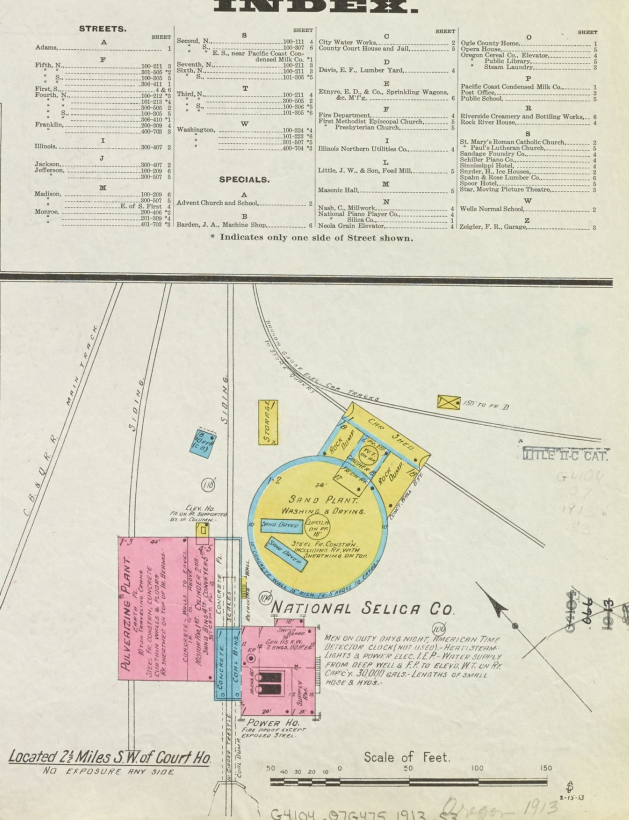
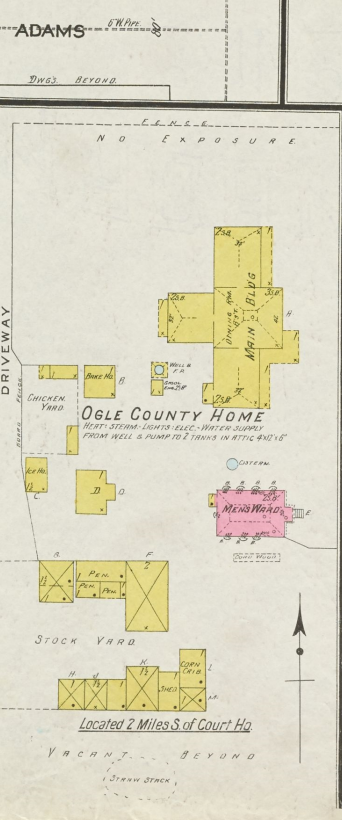
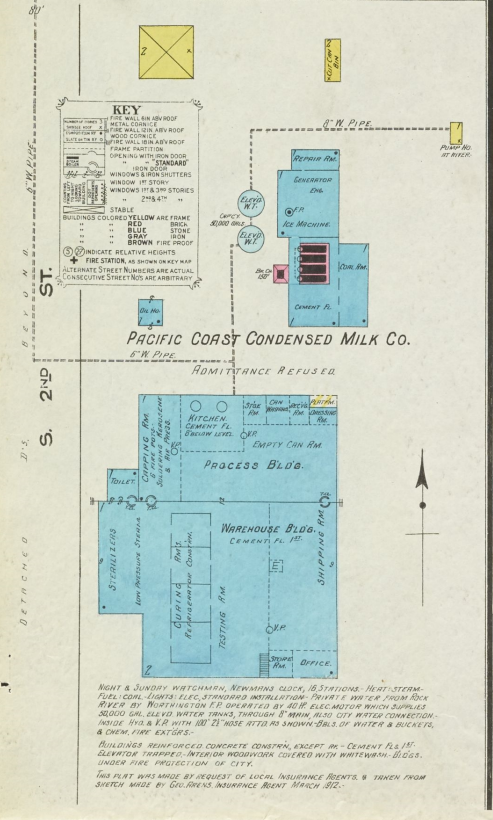
2

1



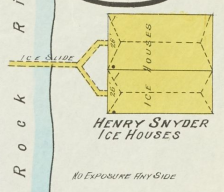
WATER FACILITIES:
 Owned by City. Gravity & direct pressure system, source of supply from 8' artesian well 1500' deep, capacity of well 300 gals. per min., also one artesian well 100' deep. Also one level of business section, supplied by 2 Gould triple lift pumps operated by gas engine & elec. motor. Capacity of pumps 470 & 270 gals. each per minute. Gravity pressure 80 lbs. per sq. inch. Daily consumption 200,000 gals. - 3 miles 4" to 8" mains. 45 double hydrant system installed in year 1912 with carrying extensions added since.

FIRE DEPT.:
 Volunteer. Kitten paid on call. 2 hose carts, 1 H.A. truck, 1 2 1/2' ladder box. Fire alarm bell at Fire department. Streets not paved. Public lights electric.

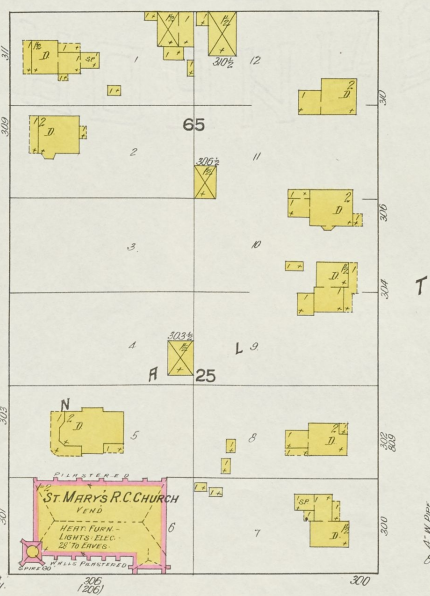
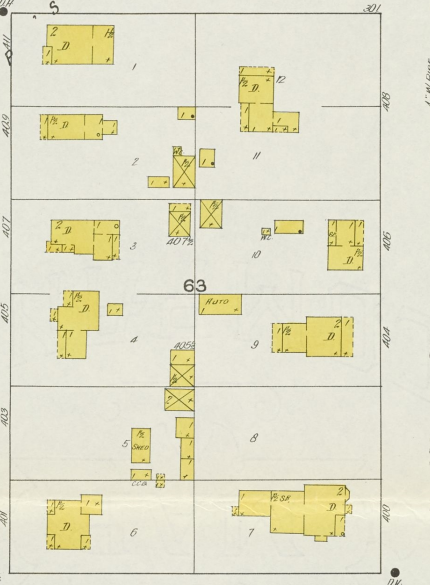
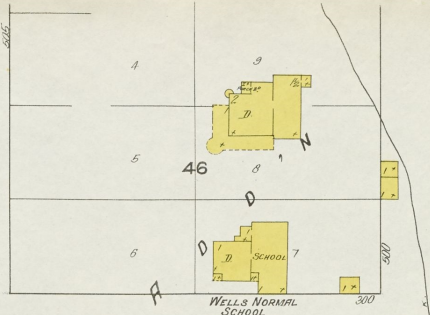
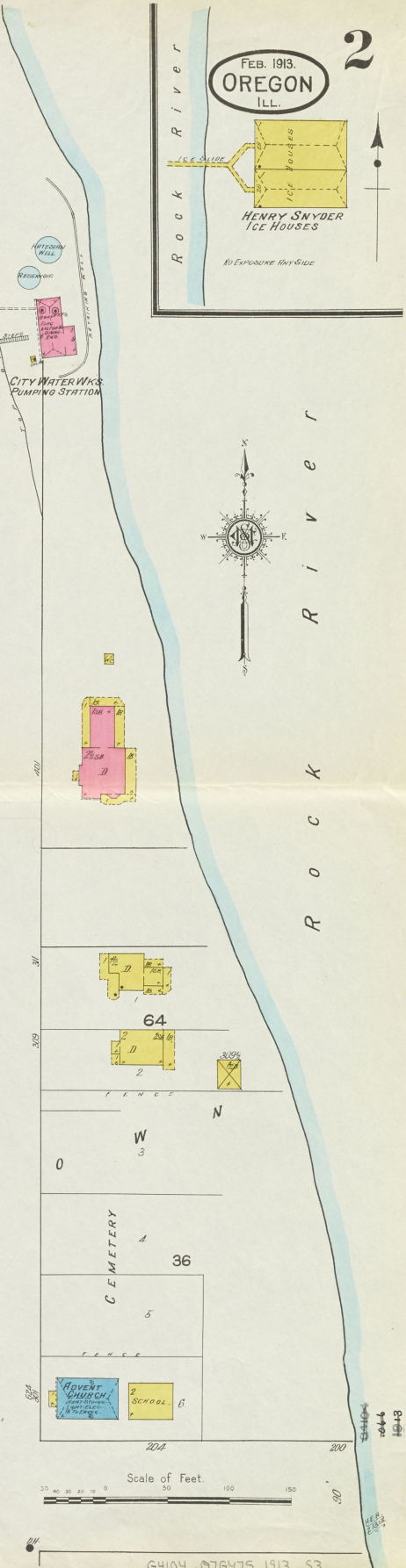


Scale of Feet. 0 50 100 150
 G4104 .076475 1913.53

FEB. 1913.
OREGON
ILL.



R
o
c
k
R
i
v
e
r



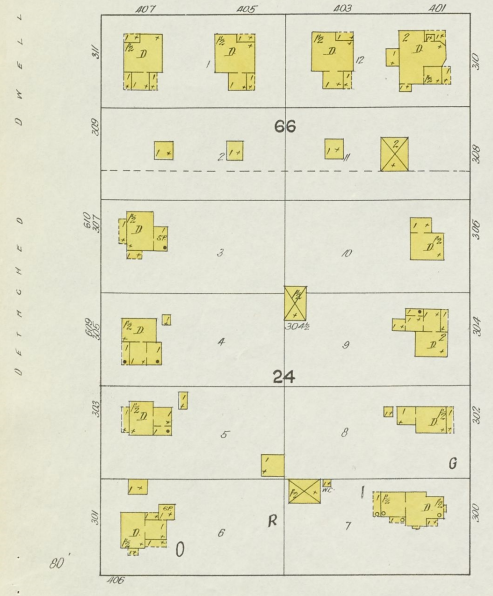
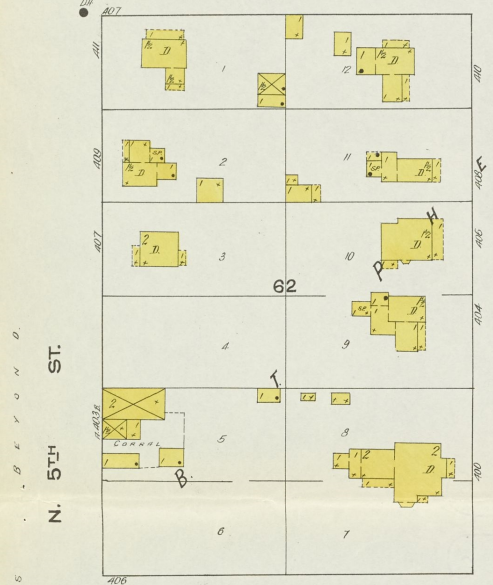
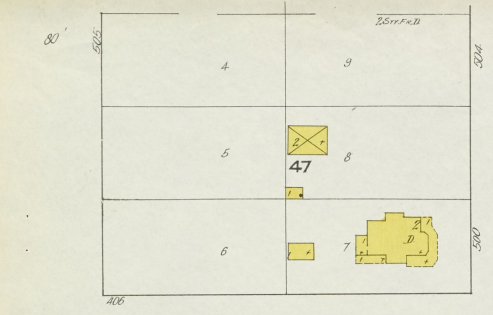
N. 4TH ST.

N. 3RD ST.

ILLINOIS

JACKSON

MONROE



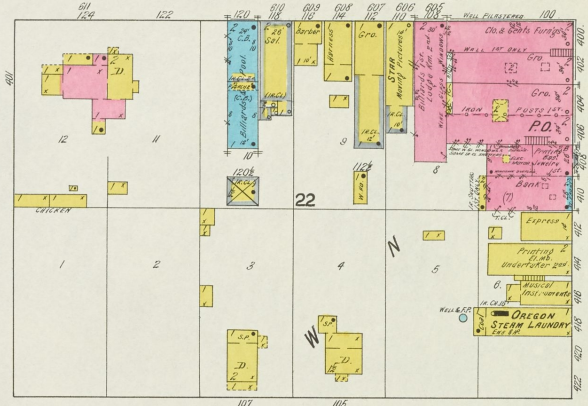
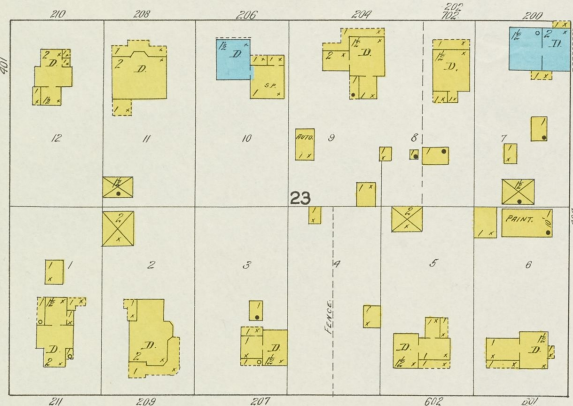
N. 5TH ST.

D
E
L
L
I
N
G
S
S
E
Y
O
N
D

FEB. 1913.
OREGON
ILL.

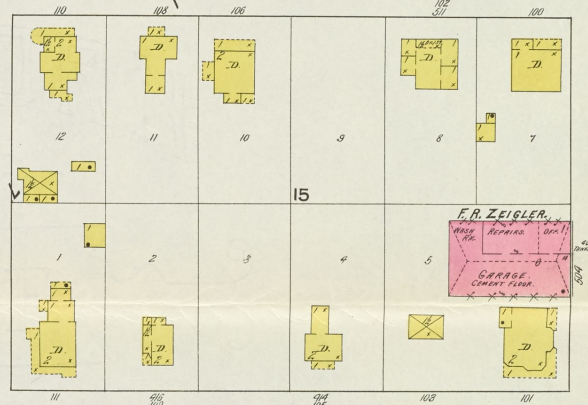
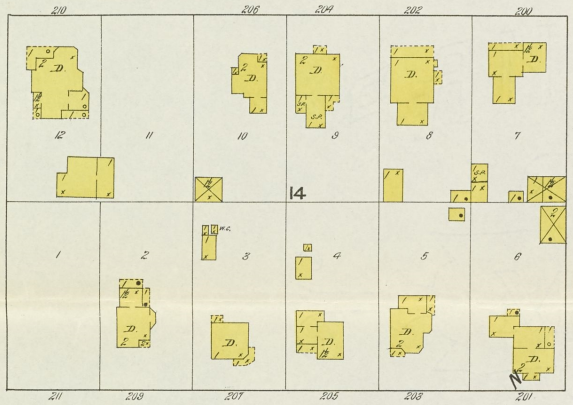
N. 4TH ST.

ST.



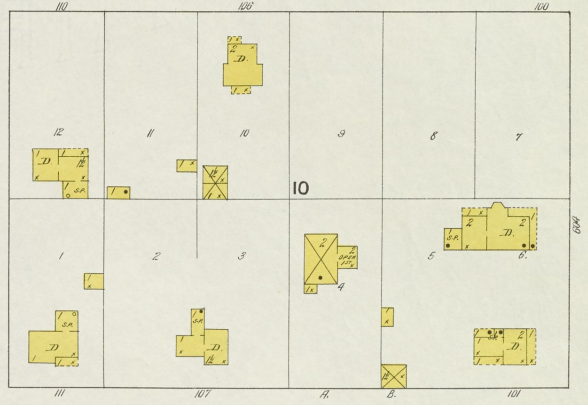
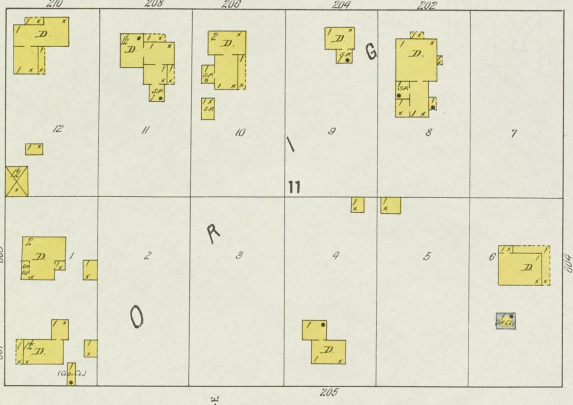
N. 5TH ST.

ST.



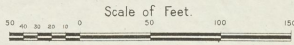
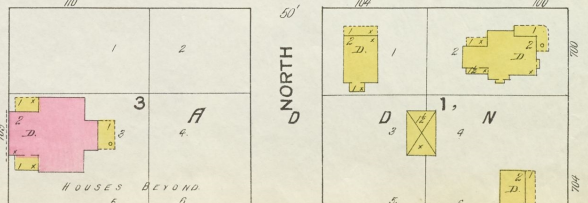
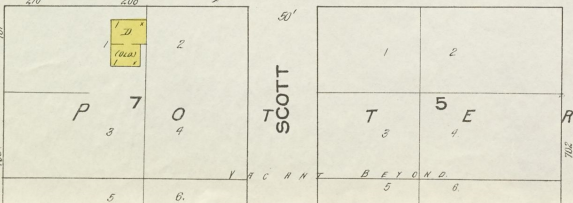
N. 6TH ST.

ST.



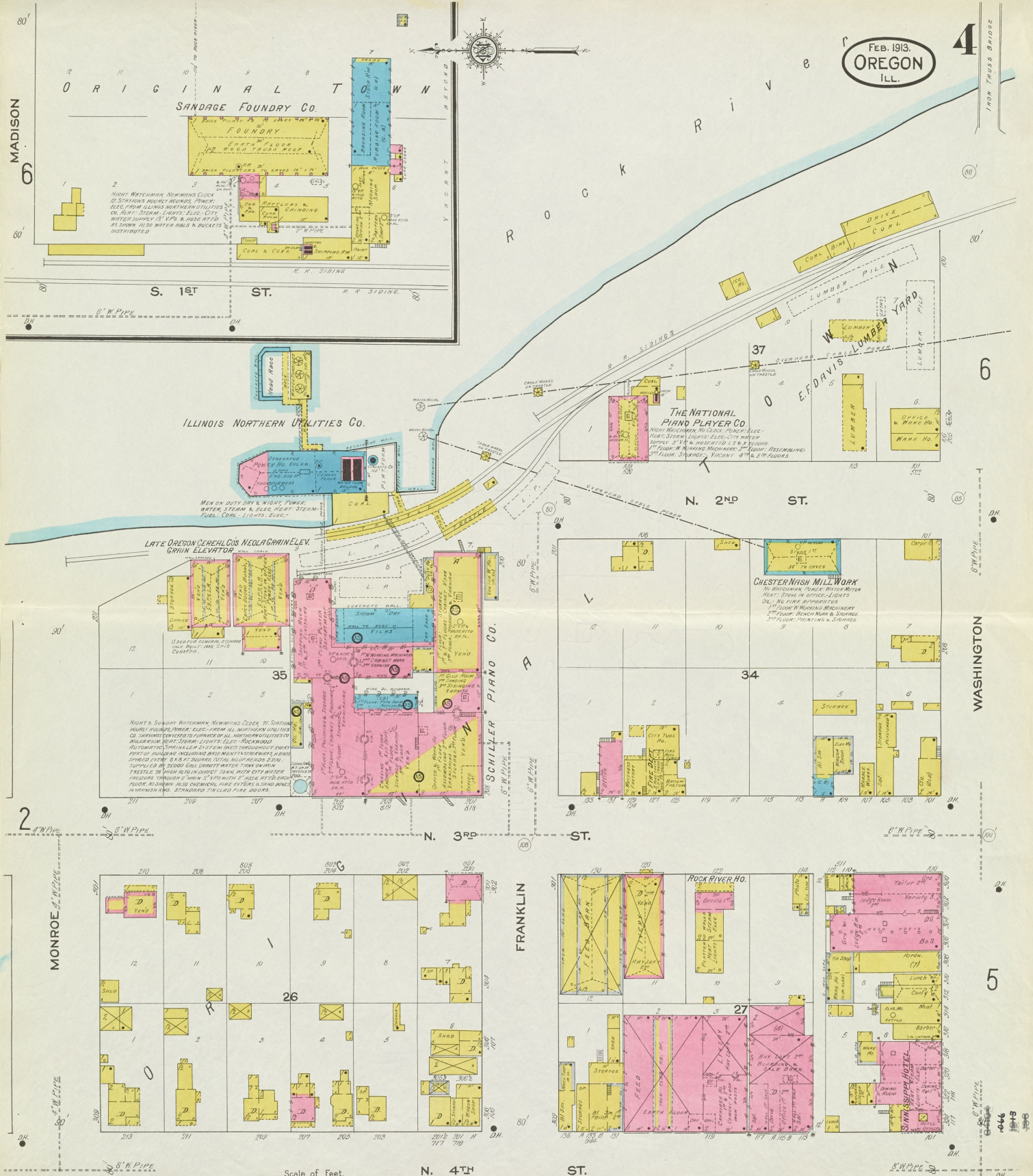
N. 7TH ST.

ST.



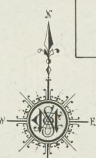
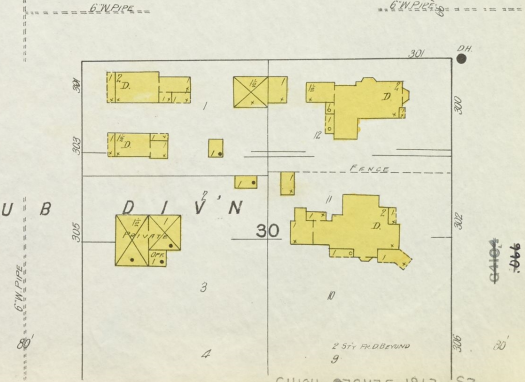
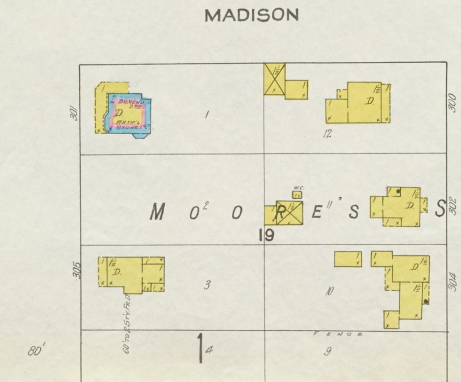
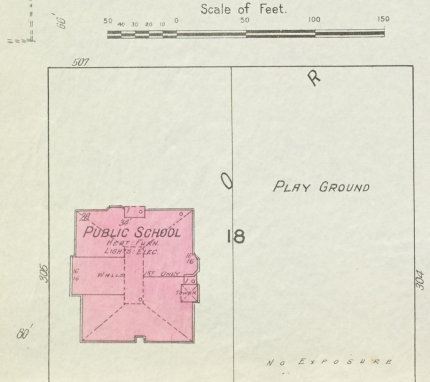
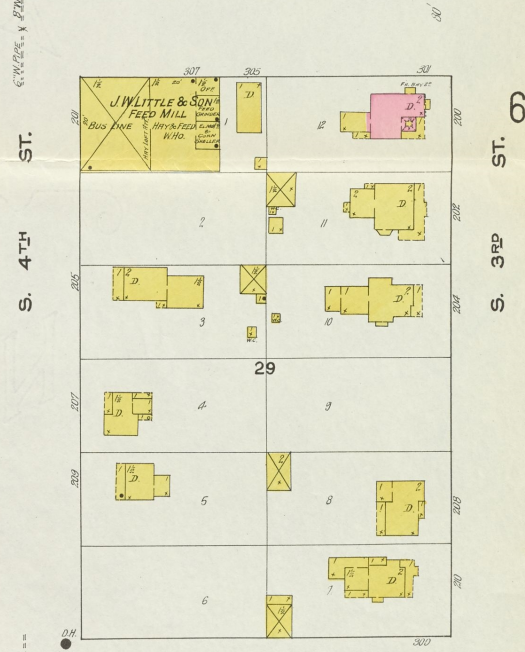
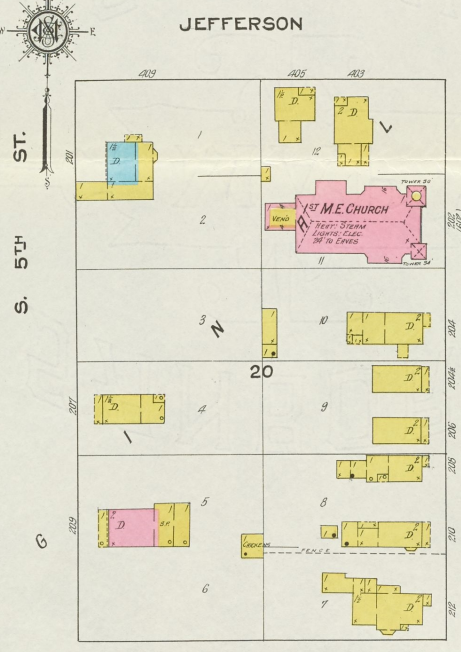
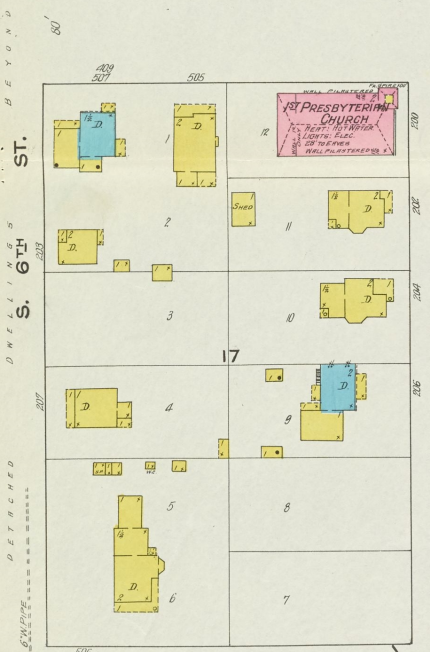
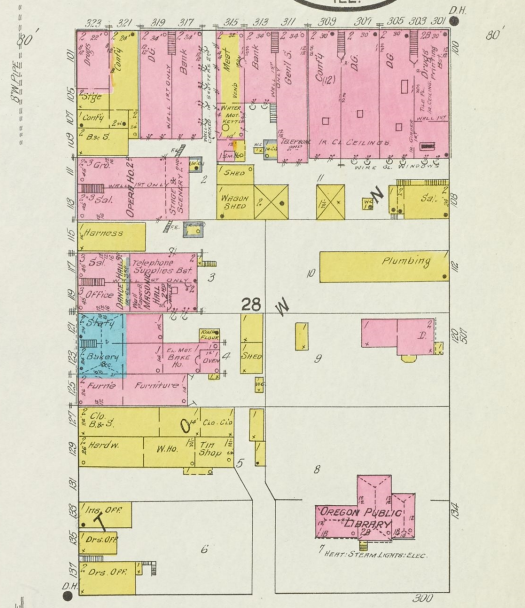
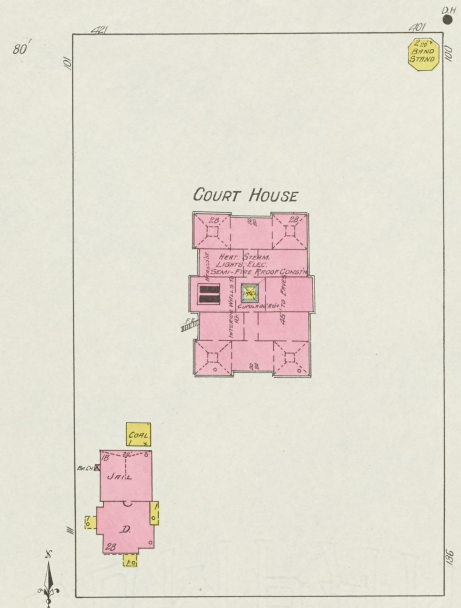
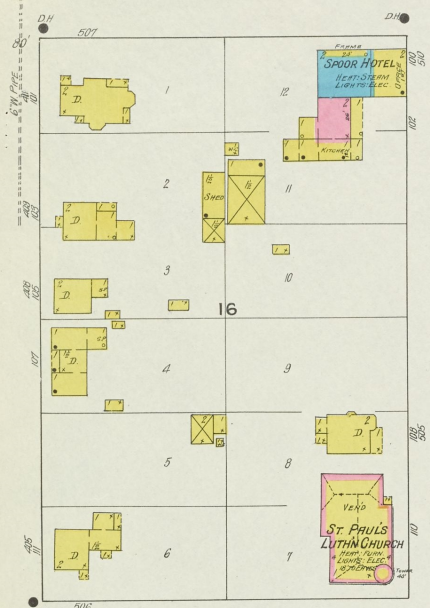
Scale of Feet. 0 50 100 150

FEB. 1913.
OREGON
ILL.



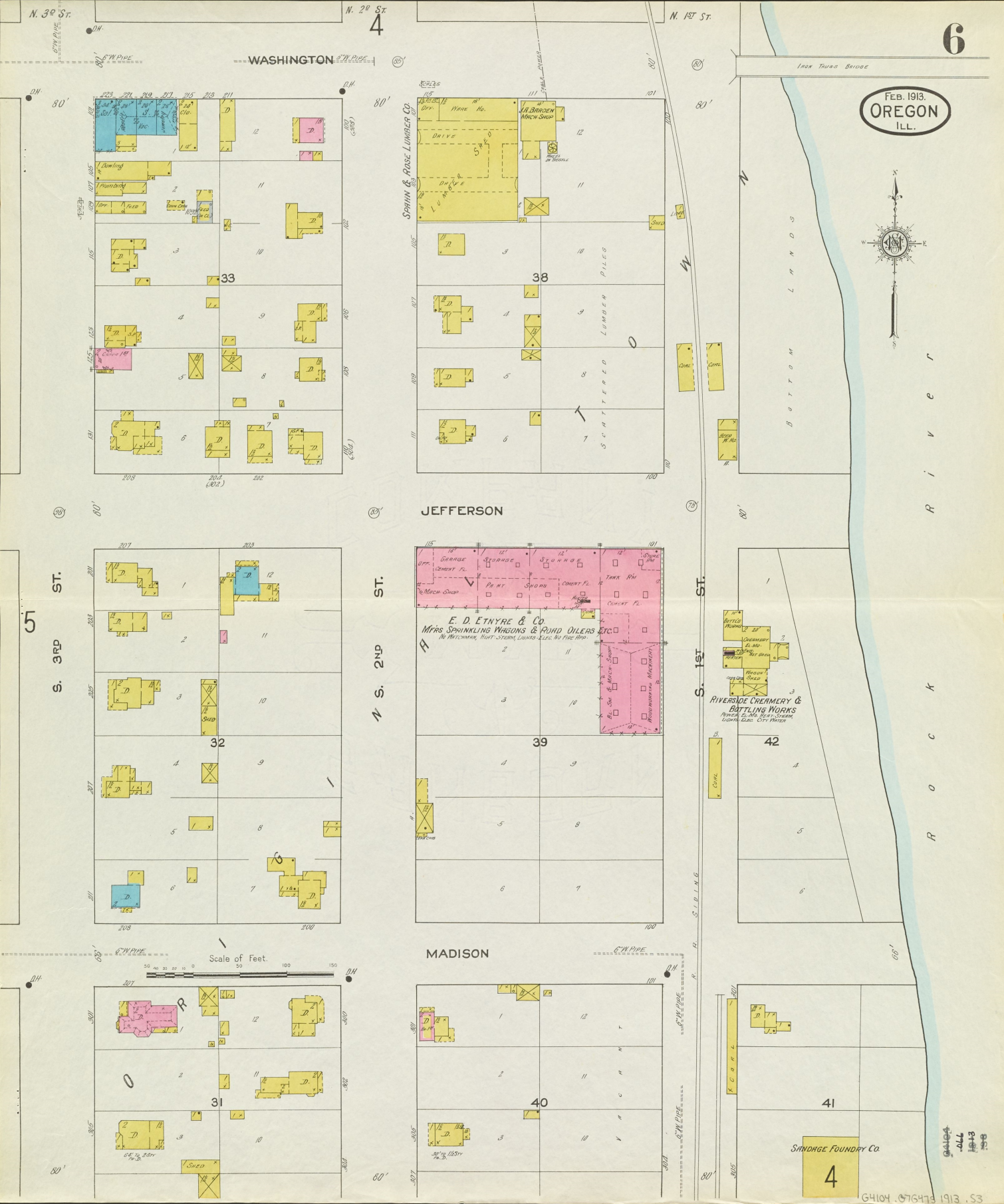
Scale of Feet.
0 50 100 150

G4104.016475 1913 53



Scale of Feet. 0 50 100 150

FEB. 1913.
OREGON
ILL.



SPRINK & ROSE LUMBER CO

JEFFERSON

E. D. ETNYRE & CO
MFRS SPRINKLING WAGONS & PUMP OILERS ETC.
No. 101, 102, 103, 104, 105, 106, 107, 108, 109, 110, 111, 112, 113, 114, 115, 116, 117, 118, 119, 120, 121, 122, 123, 124, 125, 126, 127, 128, 129, 130, 131, 132, 133, 134, 135, 136, 137, 138, 139, 140, 141, 142, 143, 144, 145, 146, 147, 148, 149, 150, 151, 152, 153, 154, 155, 156, 157, 158, 159, 160, 161, 162, 163, 164, 165, 166, 167, 168, 169, 170, 171, 172, 173, 174, 175, 176, 177, 178, 179, 180, 181, 182, 183, 184, 185, 186, 187, 188, 189, 190, 191, 192, 193, 194, 195, 196, 197, 198, 199, 200, 201, 202, 203, 204, 205, 206, 207, 208, 209, 210, 211, 212, 213, 214, 215, 216, 217, 218, 219, 220, 221, 222, 223, 224, 225, 226, 227, 228, 229, 230, 231, 232, 233, 234, 235, 236, 237, 238, 239, 240, 241, 242, 243, 244, 245, 246, 247, 248, 249, 250, 251, 252, 253, 254, 255, 256, 257, 258, 259, 260, 261, 262, 263, 264, 265, 266, 267, 268, 269, 270, 271, 272, 273, 274, 275, 276, 277, 278, 279, 280, 281, 282, 283, 284, 285, 286, 287, 288, 289, 290, 291, 292, 293, 294, 295, 296, 297, 298, 299, 300, 301, 302, 303, 304, 305, 306, 307, 308, 309, 310, 311, 312, 313, 314, 315, 316, 317, 318, 319, 320, 321, 322, 323, 324, 325, 326, 327, 328, 329, 330, 331, 332, 333, 334, 335, 336, 337, 338, 339, 340, 341, 342, 343, 344, 345, 346, 347, 348, 349, 350, 351, 352, 353, 354, 355, 356, 357, 358, 359, 360, 361, 362, 363, 364, 365, 366, 367, 368, 369, 370, 371, 372, 373, 374, 375, 376, 377, 378, 379, 380, 381, 382, 383, 384, 385, 386, 387, 388, 389, 390, 391, 392, 393, 394, 395, 396, 397, 398, 399, 400, 401, 402, 403, 404, 405, 406, 407, 408, 409, 410, 411, 412, 413, 414, 415, 416, 417, 418, 419, 420, 421, 422, 423, 424, 425, 426, 427, 428, 429, 430, 431, 432, 433, 434, 435, 436, 437, 438, 439, 440, 441, 442, 443, 444, 445, 446, 447, 448, 449, 450, 451, 452, 453, 454, 455, 456, 457, 458, 459, 460, 461, 462, 463, 464, 465, 466, 467, 468, 469, 470, 471, 472, 473, 474, 475, 476, 477, 478, 479, 480, 481, 482, 483, 484, 485, 486, 487, 488, 489, 490, 491, 492, 493, 494, 495, 496, 497, 498, 499, 500, 501, 502, 503, 504, 505, 506, 507, 508, 509, 510, 511, 512, 513, 514, 515, 516, 517, 518, 519, 520, 521, 522, 523, 524, 525, 526, 527, 528, 529, 530, 531, 532, 533, 534, 535, 536, 537, 538, 539, 540, 541, 542, 543, 544, 545, 546, 547, 548, 549, 550, 551, 552, 553, 554, 555, 556, 557, 558, 559, 560, 561, 562, 563, 564, 565, 566, 567, 568, 569, 570, 571, 572, 573, 574, 575, 576, 577, 578, 579, 580, 581, 582, 583, 584, 585, 586, 587, 588, 589, 590, 591, 592, 593, 594, 595, 596, 597, 598, 599, 600, 601, 602, 603, 604, 605, 606, 607, 608, 609, 610, 611, 612, 613, 614, 615, 616, 617, 618, 619, 620, 621, 622, 623, 624, 625, 626, 627, 628, 629, 630, 631, 632, 633, 634, 635, 636, 637, 638, 639, 640, 641, 642, 643, 644, 645, 646, 647, 648, 649, 650, 651, 652, 653, 654, 655, 656, 657, 658, 659, 660, 661, 662, 663, 664, 665, 666, 667, 668, 669, 670, 671, 672, 673, 674, 675, 676, 677, 678, 679, 680, 681, 682, 683, 684, 685, 686, 687, 688, 689, 690, 691, 692, 693, 694, 695, 696, 697, 698, 699, 700, 701, 702, 703, 704, 705, 706, 707, 708, 709, 710, 711, 712, 713, 714, 715, 716, 717, 718, 719, 720, 721, 722, 723, 724, 725, 726, 727, 728, 729, 730, 731, 732, 733, 734, 735, 736, 737, 738, 739, 740, 741, 742, 743, 744, 745, 746, 747, 748, 749, 750, 751, 752, 753, 754, 755, 756, 757, 758, 759, 760, 761, 762, 763, 764, 765, 766, 767, 768, 769, 770, 771, 772, 773, 774, 775, 776, 777, 778, 779, 780, 781, 782, 783, 784, 785, 786, 787, 788, 789, 790, 791, 792, 793, 794, 795, 796, 797, 798, 799, 800, 801, 802, 803, 804, 805, 806, 807, 808, 809, 810, 811, 812, 813, 814, 815, 816, 817, 818, 819, 820, 821, 822, 823, 824, 825, 826, 827, 828, 829, 830, 831, 832, 833, 834, 835, 836, 837, 838, 839, 840, 841, 842, 843, 844, 845, 846, 847, 848, 849, 850, 851, 852, 853, 854, 855, 856, 857, 858, 859, 860, 861, 862, 863, 864, 865, 866, 867, 868, 869, 870, 871, 872, 873, 874, 875, 876, 877, 878, 879, 880, 881, 882, 883, 884, 885, 886, 887, 888, 889, 890, 891, 892, 893, 894, 895, 896, 897, 898, 899, 900, 901, 902, 903, 904, 905, 906, 907, 908, 909, 910, 911, 912, 913, 914, 915, 916, 917, 918, 919, 920, 921, 922, 923, 924, 925, 926, 927, 928, 929, 930, 931, 932, 933, 934, 935, 936, 937, 938, 939, 940, 941, 942, 943, 944, 945, 946, 947, 948, 949, 950, 951, 952, 953, 954, 955, 956, 957, 958, 959, 960, 961, 962, 963, 964, 965, 966, 967, 968, 969, 970, 971, 972, 973, 974, 975, 976, 977, 978, 979, 980, 981, 982, 983, 984, 985, 986, 987, 988, 989, 990, 991, 992, 993, 994, 995, 996, 997, 998, 999, 1000

MADISON

SANDAGE FOUNDRY CO

4

Scale of Feet.

