

chapter on "The Printing Industry."

The plant was purchased for \$800, of which \$500 was borrowed from a local citizen and a note for \$300 given for the balance.

The *Index* office was located over the Sharer grocery, now the sales room of the Illinois Northern Utilities Company. The equipment was antiquated, but in September, 1899, it was moved to the building on the northeastern corner of the college campus just vacated by the Brethren Publishing House, which had moved to Elgin. New equipment was added and the little plant started to grow. Kable Brothers continued to publish the *Index* until 1930, a period of 32 years, when it was sold to Worthington Thomas, who has been the publisher since that time. During the long period that Kable Brothers published the *Index*, there were besides the Kables a number of editors, the most talented of which was Robert Toole, who was a very versatile and humorous writer. Other writers for various periods of time were Walter Basye, W. I. Prugh, A. S. Barre, A. H. Rittenhouse and Worthington Thomas.

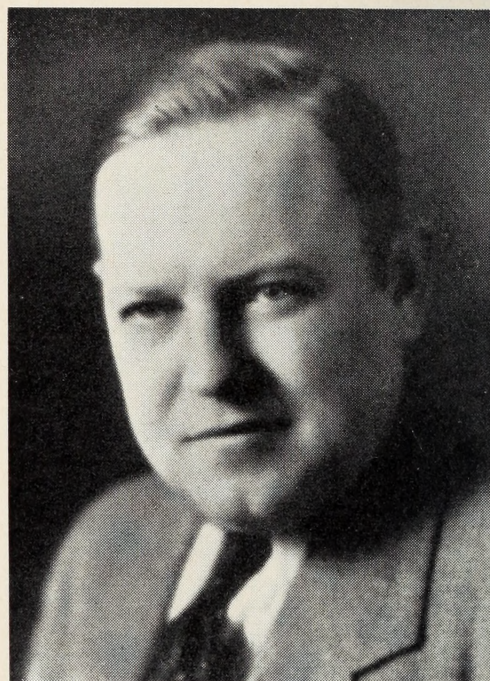
MOUNT MORRIS NEWS

May 20, 1896, Mount Morris acquired a second newspaper—the *Mount Morris News*, edited and published by Charles H. Canode, with M. Eliza Canode as associate editor. The *News* was continued under this management for four and one-half years. In October, 1900, Mr. Canode sold out to A. H. Rittenhouse, who after a few months consolidated with the *Index*, in February, 1901. The plant was situated upstairs over the grocery store of the Newcomer Company, now the Cratty clothing store.

THE CONSTITUTION-DEMOCRAT

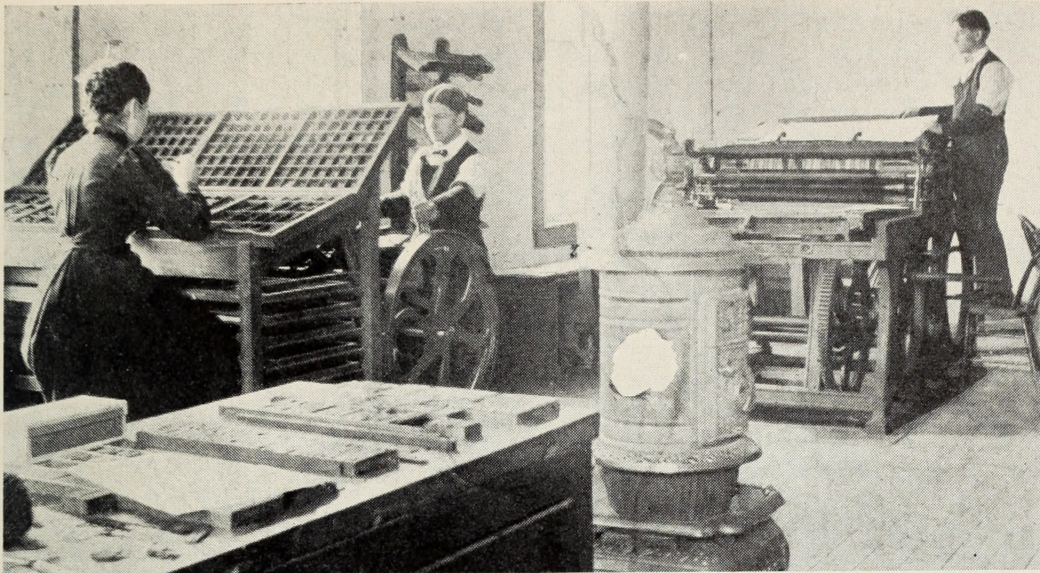
In October, 1902, Kable Brothers & Rittenhouse, publishers of the *Mount Morris Index*, acquired the *Constitution-Democrat*, a Democratic paper previously published at Oregon. It was brought to Mount Morris and Robert R. McClure installed as editor. The first issue printed in Mount Morris was dated Oct. 2, 1902, Vol. 37, No. 14. The only difference between the *Constitu-*

tion-Democrat and the *Index* was that the first page of the former was devoted to Democratic editorials. The first issue contained the following information in regard to the origin of the *Constitution-Democrat*: "Mount Morris people remember that the *Democrat* was originally started in Mount Morris by Mr. John Sharer, under the caption of the *Ogle County Democrat*, of which Mr. Sharer was editor and Dr. B. G. Stevens, associate editor. It was formed from the ruin of the *Mount Morris Independ-*

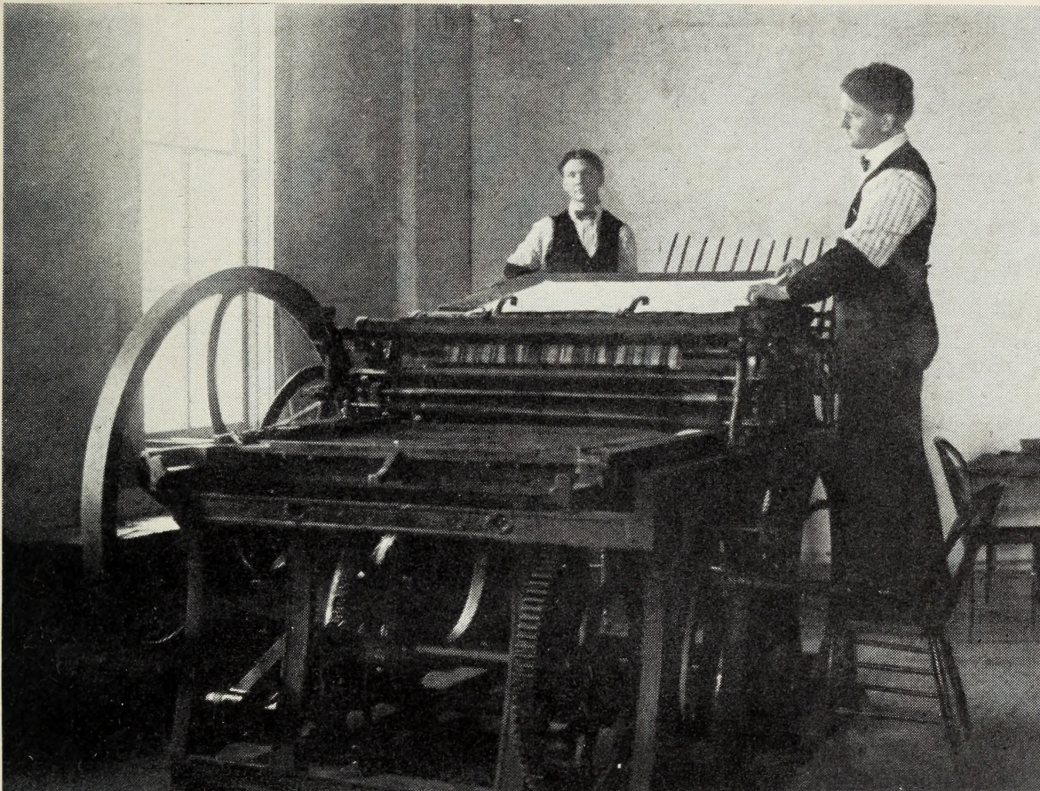


WORTHINGTON H. THOMAS, editor and publisher of the *Mount Morris Index*, is the son of Noble F. and Susan (Young) Thomas and was born on the Thomas farm near Mount Morris, Aug. 16, 1898. He was born during the same month that H. J. and H. G. Kable purchased the *Mount Morris Index*, which he became editor of 25 years later. He graduated from the Mount Morris High School in 1917, attended the University of Illinois in 1918 and Mount Morris College in 1919 and 1920. He became assistant editor of the *Index* for Kable Brothers Company in 1922 and in 1930 purchased the property, since which time he has been the editor and publisher. While at the University of Illinois, he received three months training in Co. B, S.A.T.C. He is a member of the American Legion, Moose, Business Men's League and Kiwanis. In 1928, he married Miss Lorraine Brown, former teacher of piano in Mount Morris College, and they have two children, Alan Keith and Nancy Adeline.

Original from
UNIVERSITY OF ILLINOIS AT
URBANA-CHAMPAIGN



THIS PICTURE shows the equipment and working force of the *Index* plant in 1898. Allie Kable sits at the case at the left, Harry Kable at the job press and Harvey Kable at the old cylinder press.



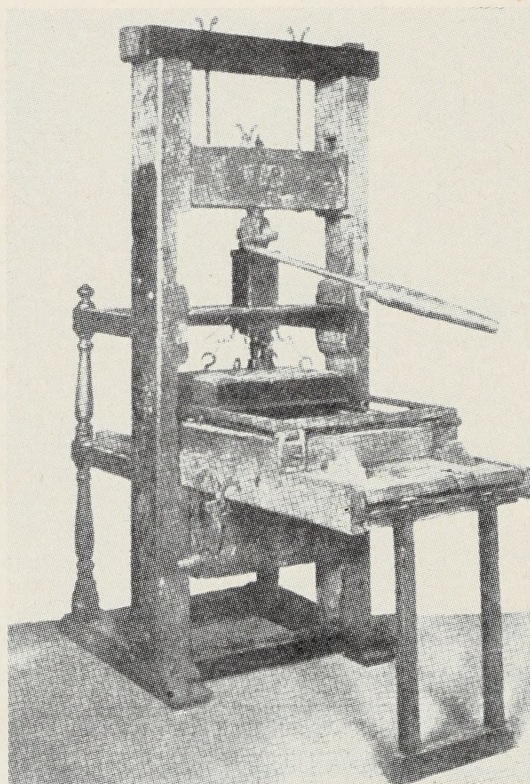
THIS old press was brought to Mount Morris at the time of the establishment of the *Mount Morris Independent* in 1876. It was known as a "Guernsey," and was manufactured by L. T. Guernsey of Rutland, Vt., and it was probably built about the year 1852. It was operated by a crank which can be seen on the right side of the press. Note the large flywheel on the left side of the press. This press was used by John Sharer for nine years for printing the *Ogle County Democrat*, and then for eight years by Chas. T. Coggins to print the *Mount Morris Index*. Kable Brothers used the press for a year while located over the Sharer grocery. It was sold to a publisher at Chadwick. In the above picture, Harry Kable stands on the chair at the right of the press and Harvey Kable at the rear.

ent. Mr. Sharer launched it forth in May, 1877, and continued to publish it in Mount Morris for twelve years, when it was moved to Oregon and changed to the *Independent-Democrat*. Mr. Sharer dropped out after a year and his partner, Mr. Wagner, continued running it. Later it was published in conjunction with the *Ogle County Republican*. In the fall of 1900, it was consolidated with the *Ogle County Constitution*, by Calvert and Locke, two young men from Rockford. Mr. Locke became discouraged after the defeat of the Democratic Party in the subsequent presidential election, and Mr. Calvert continued the paper to the present." On Jan. 1, 1903, the name was changed back to the *Ogle County Democrat*, and after about a

year was consolidated with the *Mount Morris Index*.

MOUNT MORRIS MONITOR

The latest newspaper enterprise was started in a small way by G. C. Boswell in September, 1934, in connection with a small printing establishment. *The Monitor* was taken over in June, 1935, by F. G. Meeker who conducted it until July, 1936, when he sold out to John W. Tilton of Rochelle, who continued to publish the paper but changed the name to the *Mount Morris Leader*. It was printed in Rochelle and after being edited by several different employes was finally consolidated with the *Mount Morris Index*, which is now the only newspaper in Mount Morris.



Chapter 9

THE PRINTING INDUSTRY

(This chapter written by Milo D. Zimmerman)

MOUNT MORRIS has become known all over the United States as a printing community. The establishment of the little plant in 1842 for the printing of the *Rock River Register* was the beginning of the industry and during the next forty years there were a number of small plants established to print the various newspapers as described in the preceding chapter.

BRETHREN PUBLISHING HOUSE

IN the year 1880, M. M. Eshelman moved a private printing outfit to Mount Morris from Lanark, where he had been publishing a Dunkard paper known as the *Brethren at Work*. He continued the same here with a circulation of about four thousand, occupying, at that time, quarters in the Seibert block. In 1881, Mr. Eshelman failed and the business was purchased by Elders D. L. Miller and Joseph Amick. In 1884 these gentlemen consolidated with their plant that of the *Primitive Christian*, of Huntingdon, Pa., and changed the name to the *Gospel Messenger*. From that time until 1896 the company began the publication of a large number of church papers, books and tracts, and built up a very profitable business. In 1896 the entire publishing business was turned over to the Brethren Church. In September, 1899, the printing plant and publishing business was moved from Mount Morris to a new brick building at Elgin, Ill., taking along about fifty people, including the families of Joseph Amick, Eld. J. H. Moore, Grant Mahan, L. A. Plate, S. M. Eshelman, Chas. Eshelman, James Moore, Galen B. Royer and Daniel Beard. This move was made in order to secure better mailing and shipping facilities.

At about this time, however, began

the development of another printing industry in Mount Morris, which has proven conclusively that this move on



JOSEPH AMICK died at Elgin, Ill., Jan. 4, 1915, aged 80 years. For many years Mr. Amick was business manager of the Brethren Publishing House in Mount Morris. He was born in Mifflin County, Pa., Oct. 28, 1834, and after a number of years spent in teaching and farming, he came to Mount Morris in 1881 and bought a half interest in the "Brethren at Work." He was associated with Elder D. L. Miller in developing the publishing business, which was eventually turned over to the Brethren Church. When the business was moved to Elgin in 1899, Mr. Amick went along and continued as business manager until ill health forced him to retire. He was married twice, first to Susan Mertz, to whom seven children were born, five of whom died in early life. The mother died in 1870. In 1871, he married Hannah Reiff, and to this union were born three daughters: Almira, Irene and Cora.

Original from

UNIVERSITY OF ILLINOIS AT
URBANA-CHAMPAIGN

the part of the Brethren was not necessary and perhaps they might have been better off had they remained in Mount Morris.

THE KABLE PLANT

THE beginning, development and present position of Kable Brothers Company is typical of the rise of American business. In the minds of the twin eighteen-year-old brothers, who took over the abandoned country print shop of Chas. T. Coggins in the summer of 1898, there could hardly have been the faintest premonition of what that step was to result in forty years later. Before the turn of the century Mount Morris was a typical mid-western country town. Today it is a city in miniature. While almost every town in Ogle County records a static, if not a falling, population in this period, Mount Morris has more than doubled the number of its inhabitants. This growth and the present prosperous condition of our cit-



THE KABLE TWINS as they appeared several years after the family moved to Mount Morris from Lanark in 1882.

izens has come entirely from the development of the printing plant. Mount Morris College contributed for awhile, but there has been a steady population increase even since its doors closed in 1932.

In the fall of 1896, Harry Kable, sixteen and just out of school, got a job with Charles H. Canode, publisher of the *Mount Morris News*, as printer's devil. The Sept. 16, 1896, issue of that paper records the event with these few words: "Harry Kable is 'holding a case' in the *News* office." The Brethren Publishing House, now located at Elgin, was also operating in Mount Morris, and Harry went to work for them the following year. (At this point it is interesting to note that the Brethren concern, feeling that Mount Morris was not large enough to support their growing official printery, decided to move to Elgin. Today it is doing only one-seventh as much business as Kable Brothers Company, and employs only about a hundred people.) When the aforementioned Coggins disappeared from the scene, Harry persuaded his brother Harvey, who had just completed two years in Mount Morris College, to join with him in taking over the shop. A deal was made with the wife of the missing publisher and the boys started off on their career. Coggins published the *Mount Morris Index*, the other local weekly, and did the usual class of printing that was to be found in such a shop in those days. The young brothers decided to operate as a partnership. An older sister, Allie, went to work for them, and soon learned to set type. Another early associate was A. H. Rittenhouse, who became a partner several years later, when the *Mount Morris News*, which he had purchased from Chas. H. Canode, was consolidated with the *Index*.

The Coggins print shop was located on the second floor of what is now the local office of the Illinois Northern Utilities Company. In 1899, when the Brethren Publishing House moved away and left their building on the northeast corner of the campus standing vacant, the twin brothers decided it was time, in view of their expanding business, to seek more commodious

Original from

UNIVERSITY OF ILLINOIS AT
URBANA-CHAMPAIGN



THIS frame building was the home of the *Index* from 1900 to 1906 and was located just west of the present Wishard Building. This is a part of the Brethren Publishing House building which was moved to this location from the corner of the college campus.

quarters. They bought the abandoned Brethren building and later moved part of it across the street to the site now occupied by the Granada Theatre. The remainder of the Brethren building was torn down.

The most ambitious venture undertaken at that time was the publication of the first volume of "*Mount Morris: Past and Present.*" Most of this was written by the more scholarly inclined of the twins, Harvey, who shouldered the laborious task of interviewing old-timers and leading citizens for material. The type was set by hand, and the book printed two pages at a time. There are no records to show whether the venture was a financial success, but it kept them busy for many months. The work was completed in 1900.

The September 28, 1904, issue of the *Index* contains an account of the first serious step to build up a printing industry in Mount Morris, as follows:

"On the evening of August 12, a meeting of representative men of Mount Morris was held in the Citizens Bank, at which the publishers of this paper attempted to show to those assembled that the most rapidly growing enter-

prise in the town and the one capable of the greatest amount of future expansion is the printing business of which the home paper, the *Index*, is the nucleus. Figures of the past six years' business were given, showing an increase of more than 50 per cent for each year. Printing contracts providing additional business for the coming year 100 per cent greater than the last year were shown and served to convince those present that the enterprise is a good thing to take hold of. It was decided to incorporate the business with \$15,000 capital stock. Kable Bros. & Rittenhouse agreed to turn over the building, lot and entire business to the stock company for eight-fifteenths of the stock, which was agreed upon. It was further planned to sell the remaining stock to cover some outstanding indebtedness on new machinery and provide some working capital. All of those present at the meeting subscribed for stock and a meeting of stockholders was called to be held at the *Index* office Aug. 21, for the purpose of electing directors. The following were selected: H. E. Newcomer, J. L. Rice, J. H. Rice, A. W. Brayton, A. H. Ritten-

Original from

UNIVERSITY OF ILLINOIS AT
URBANA-CHAMPAIGN

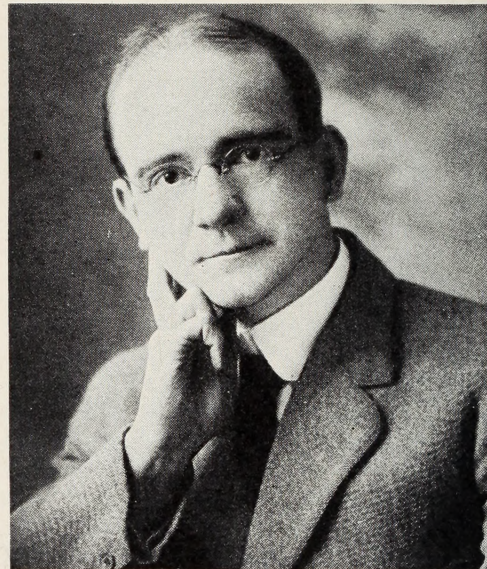
house, H. J. Kable and H. G. Kable. The charter from the Secretary of State was received early in September. The meeting of the directors for the purpose of organizing was held in the Citizens Bank last Friday evening. The following officers were elected: Joseph L. Rice, president; H. E. Newcomer, vice-president; Harvey J. Kable, secretary and treasurer. A complete set of by-laws was adopted at the same time and the future of the business was discussed. All were well pleased with the prospects for the success of the company. The business will be turned over to the new company October 1. The corporate name is Kable Bros. & Rittenhouse Co."

Up until this time A. H. Rittenhouse had been only a part-time employee. He was an older and more experienced printer, and he now assumed the major part of the mechanical supervision of the plant until he severed his active connection with the Company in 1906. In that year he followed the Brethren concern to Elgin, and was employed there until 1917. He then returned to Mount Morris to assume various executive positions with the Company, including plant superintendent, until 1932, when he resigned on account of ill health. He died February 4, 1935.

In the summer of 1904, a bid was submitted for printing *The Mystic Worker*, official monthly publication of the Mystic Workers of the World, Fulton, Ill. When the contract was awarded to the young printers, they realized for the first time that they had bitten off almost more than they could chew. Meeting the situation with typical resourcefulness, they borrowed money to buy a bigger gasoline engine and a new press, and when the issues came around each month, worked without regard for the clock or the weather until the 40,000 eight-page papers were in the mails. This printing contract proved to be the acorn from which the mighty oak has grown, because it opened up a field of printing that no one, up until then, had exploited.

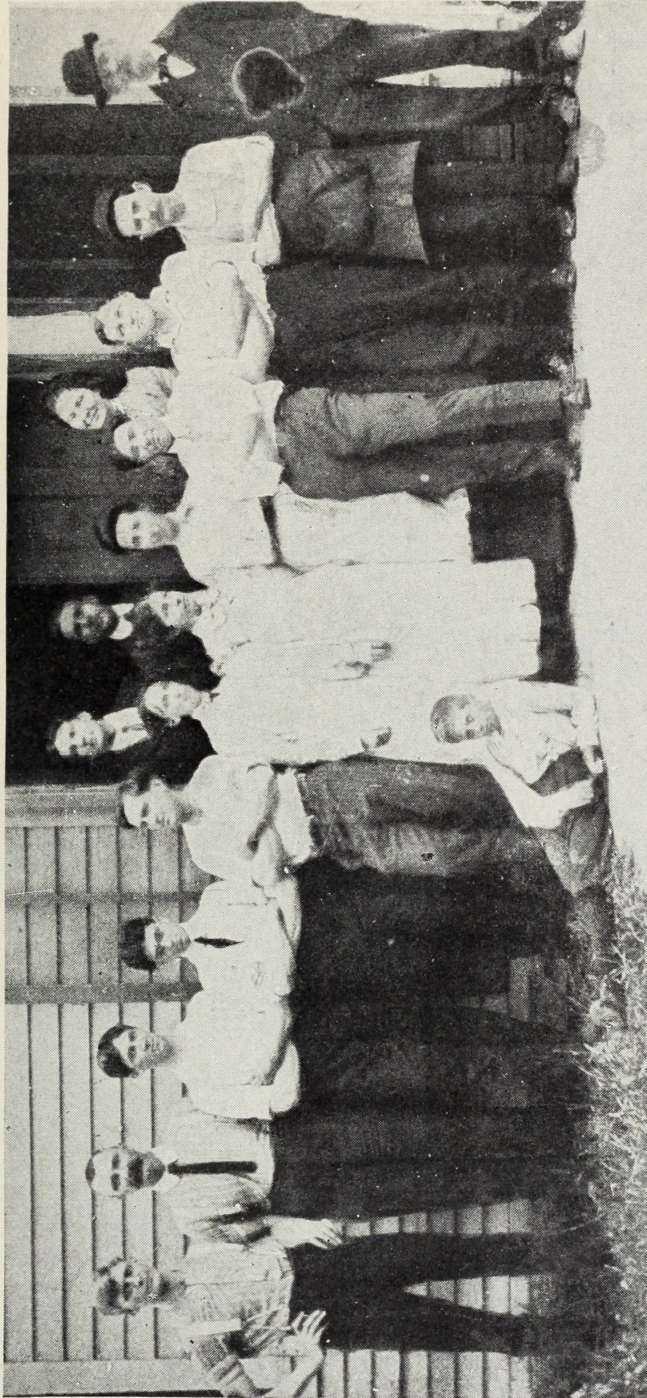
The following year a contract was made with The Columbian Knights, Chicago, for printing their official paper, and each year thereafter saw the ac-

quisition of more business of this character. Special services of various kinds were developed to attract fraternal society editors, and within a period of ten years Kable Brothers Company was known the length and breadth of the land as specialists in the printing of fraternal society publications. Other printing was done, including catalogs, occasionally a book, circulars, leaflets, pamphlets and booklets, but the backbone of the business up until about 1925

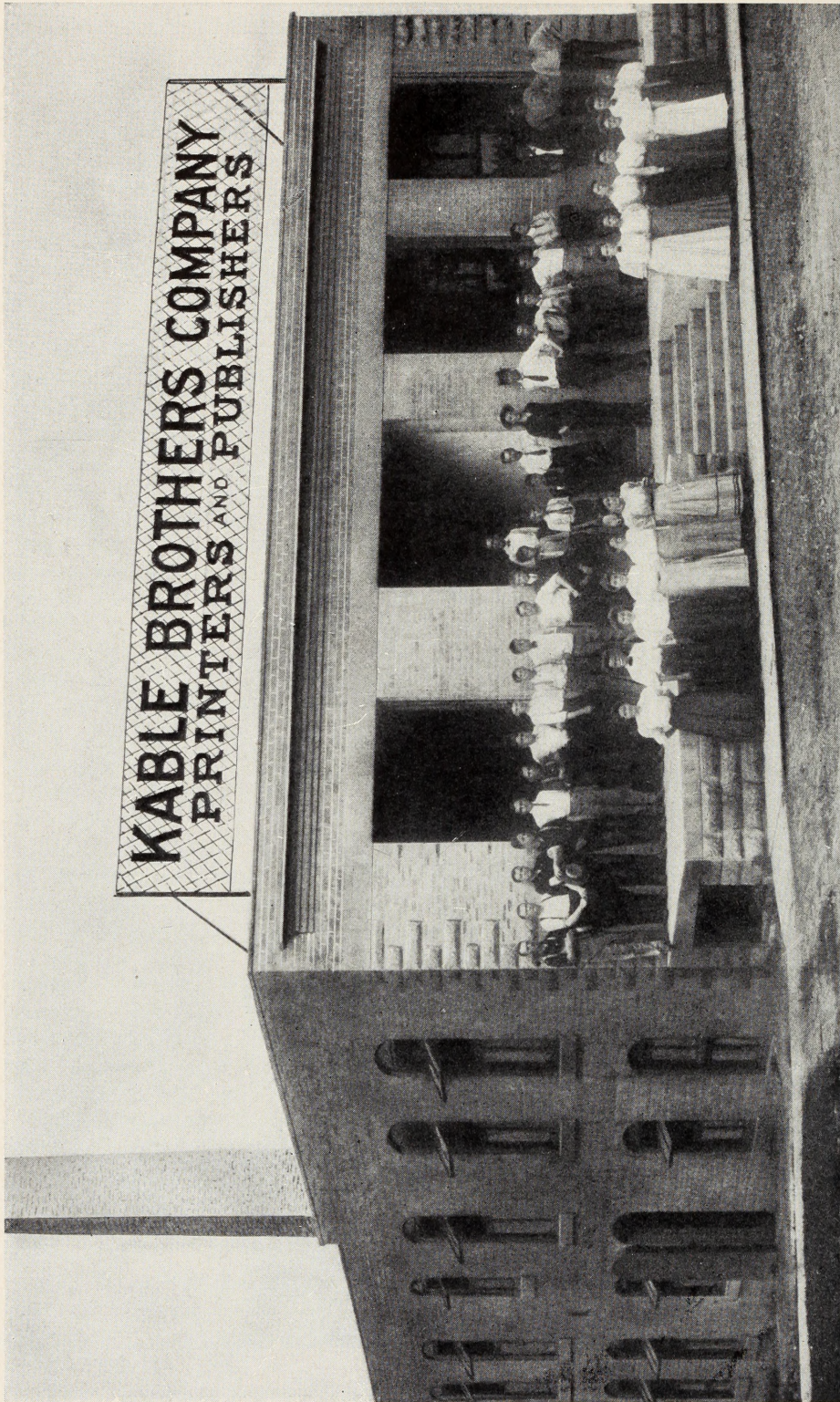


ABRAM H. RITTENHOUSE, son of Joseph and Anna Haldeman Rittenhouse, was born Feb. 13, 1879, at Myerstown, Pa., and died in Mount Morris, Feb. 4, 1935, aged 56 years. At an early age, his family moved to Norristown, Pa., where he was educated. He learned the printing trade at Norristown and Philadelphia. In 1898, he came to Mount Morris to enter the employ of the Brethren Publishing House, where he stayed until the Brethren plant was moved to Elgin. He then became associated with Kable Brothers and during that period did most of the mechanical work on the first edition of "Mount Morris: Past and Present." Later he followed the Brethren Publishing House to Elgin, where he remained for a number of years, finally returning to Mount Morris in 1917, and took a position with Kable Brothers Company, eventually becoming superintendent of the plant. Ill health forced him to retire in 1931. During a considerable period, he was editor of the *Mount Morris Index*. He served a term as president of the Village Board of Trustees and also on the school board. In 1900, he was married to Etta M. Shirk, and two sons were born to them: Nelson H. and Leland S.

Original from
UNIVERSITY OF ILLINOIS AT
URBANA-CHAMPAIGN



THE printing plant working force in August, 1905. From left to right, Conrad A. Sitz, Sidney J. Hess, Frank Shiley, Jesse Allen, Clyde Davis, Bessie Fisher, Allie Kable, Grace Palmer, Silas S. Goughnour, Anna Trostle, C. G. Gloss, Burton C. Wheeler, John Sharer, Earl Allen (in front), in doorway, H. J. and H. G. Kable.



THIS building was erected in 1906 but was used only three years until the new plant was built at the north end of town. The working force of approximately 50 are shown in front of the building. It is now being used as a central heating plant for the Kable Inn and all the buildings on the campus.

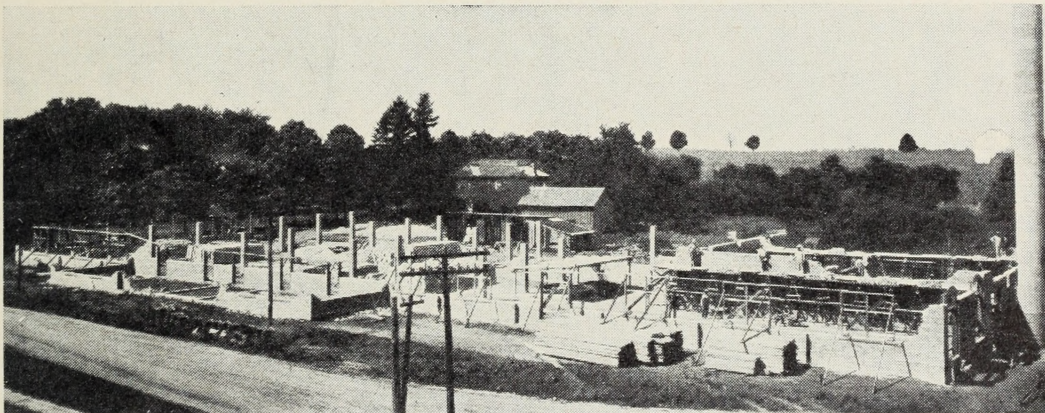


ONE OF the reasons for locating the Kable plant at the depot was the rapidly increasing volume of mail which had to be hauled to the train as shown above. Now the mail is trucked direct into mail cars which are switched into the building. Lew Lizer is the driver of the dray shown above.

was fraternal society publication printing. Only twice during that time was an excursion made into other fields. In 1909, the Company acquired the Mount Morris Electric Light Company, and sold current to the villagers. This arrangement was discontinued in 1912. In 1913, equipment was installed for printing and waxing bread wrappers, but this work proved unprofitable and

was discontinued in 1916, the machinery being sold to a concern in Wisconsin specializing in bread-wrapper printing.

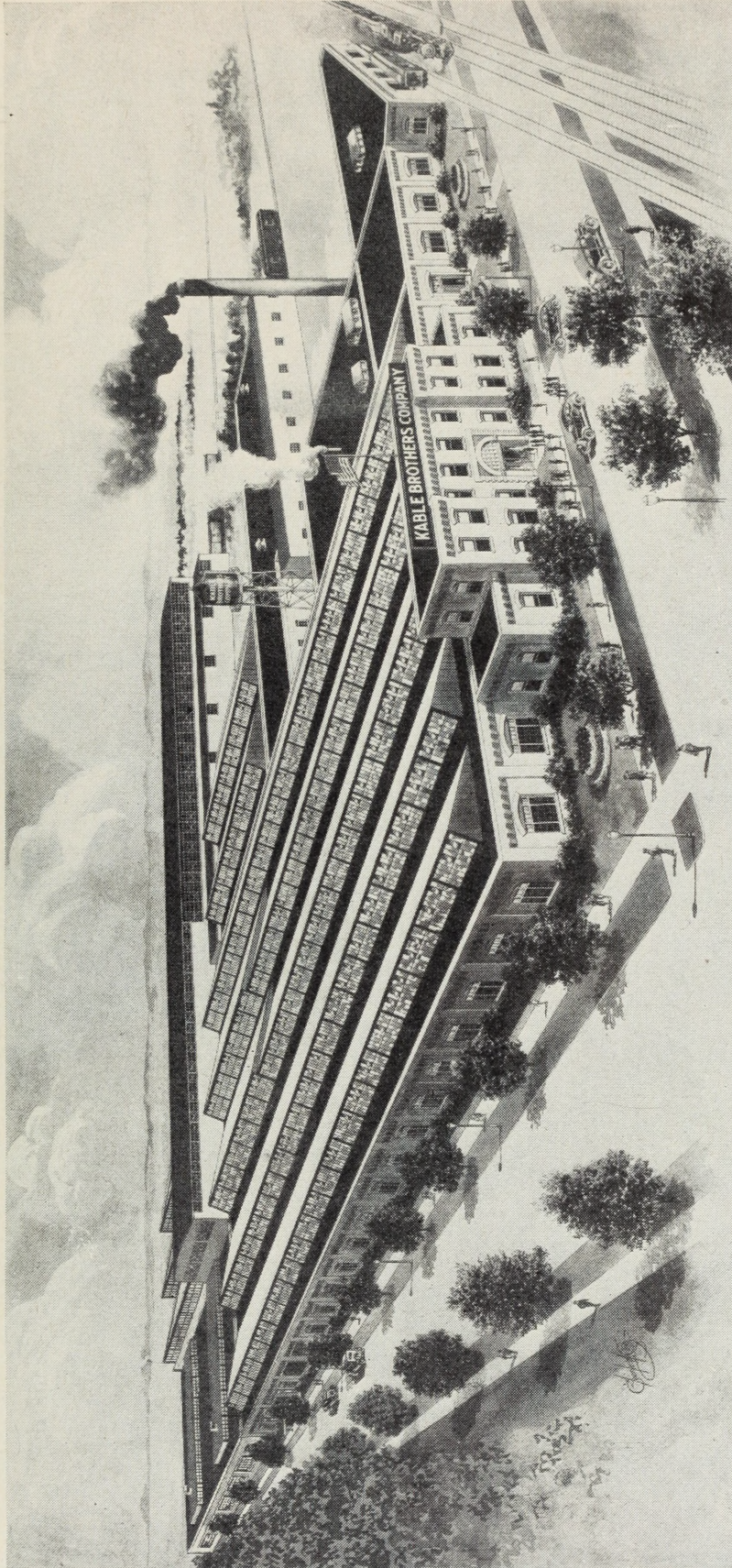
From 1904 to 1906, business continued to come in so rapidly that it was necessary to plan for even larger space. In the latter year there was erected the structure that is now used as a central heating plant for all of the buildings on the campus, but these quarters were



THIS picture shows the Kable plant in course of construction in the summer of 1909. It was built by N. E. Buser.



THIS picture of the working force of approximately 100 people was taken soon after the company moved to the new building in 1909. Quite a few of these workmen are still with the company.



THIS ARTIST'S DRAWING of the Kable plant shows the building as it now appears. Since the original building was erected in 1909, at least a dozen additions have been built, the latest being the large stock room built in 1929 and the rotogravure department built in 1936.



KABLE WORKING FORCE about the year 1920

1. Walter Marshall
2. Ralph Crowell
3. Pridmore Prugh
4. Ralph Lizer
5. Glenn E. Jones
6. Harold Ross
7. C. B. Trump
8. Dan Eversole
9. Paul Langdon
10. William C. Alter
11. J. S. Rodeffer
12. Harry Sprecher
13. Adolph C. Jindra
14. J. H. Seneff

15. Ben McHenry
16. Virgil Dierdorff
17. Roy Saunders
18. Edwin Shugars
19. Luther Lizer
20. Frances Michael
21. Roy Middlekauff
22. John Marshall
23. Fred Brinker
24. Royal Brinker
25. E. L. Boydston
26. Maurice Stewart
27. J. H. Rock
28. Fred A. Mix

29. Clinton Frawert
30. E. R. Duket
31. David Bock
32. Dale Emmert
33. Bert Tilden
34. Wilbur Miller
35. Lloyd P. Smith
36. Fred Michael
37. Clyde Walkup
38. Jesse Smith
39. Leon Light
40. David B. Ross
41. Oliver Miller
42. Walter Mitchell

43. Robert Tilden
44. Paul Suter
45. Ray Seibert
46. Clayton Gloss
47. Roy Garkey
48. Fred Long
49. George Silvius
50. Benj. Royer
51. Paul Barnhizer
52. A. J. McLeod
53. John Jacobs
54. Lloyd Unger
55. Harry Carruthers
56. Howard Sprecher

57. Dudley Allen
58. O. T. McCoy
59. C. E. Merriman
60. E. J. Hyland
61. Glenn Unger
62. Harry Rock
63. Chas. Webster
64. A. V. Johnston
65. Harvey Miller
66. Ross Silvius
67. Ralph Mahoy
68. Elmer Shoemaker
69. Leonard Jenison
70. Carl Withers

71. Hiram Stouffer
72. Dale Miller
73. J. Q. Allen
74. Fred Crosby
75. U. B. Pittenger
76. Earl Williams
77. J. A. Finnen
78. R. C. Remington
79. Douglas Ross
80. Mark Meader
81. Ada Brandt
82. Maud Rodeffer
83. A. H. Rittenhouse
84. Benj. S. Price



- | | | |
|----------------------|------------------------|-----------------------|
| 85. Otto Herzfeldt | 127. Emma Wolfe | 155. Harry G. Kable |
| 86. Perley Rees | 128. Ella Brunskill | 156. Harvey J. Kable |
| 87. Donald Jenison | 129. Susan Miller | 157. W. I. Prugh |
| 88. Mary Brinker | 130. Vera Rees | 158. Arthur S. Barre |
| 89. Lulu McDonald | 131. Grace Price | 159. Herlock Longman |
| 90. Hazel Suter | 132. Olive Royer | 160. A. E. Hecker |
| 91. Bessie Domer | 133. Ada Sprecher | 161. Harry Longman |
| 92. Bessie Mahoy | 134. Ethel Shaw | 162. Frank Hilger |
| 93. C. C. Armbruster | 135. Bertha Vetter | 163. Robert Toole |
| 94. N. C. Kindlund | 136. Addie Johnston | 164. Ella Williams |
| 95. Laura Vetter | 137. Katherine Miller | 165. Lottie Remington |
| 96. Mabel Boydston | 138. Lizzie Shirk | 166. Hazel Roller |
| 97. Leslie Rees | 139. Minnie McLaughlin | 167. Luella Webster |
| 98. Paul Rees | 140. Edna Dahl | 168. Martha Swift |
| | 169. Frank Stonebraker | |

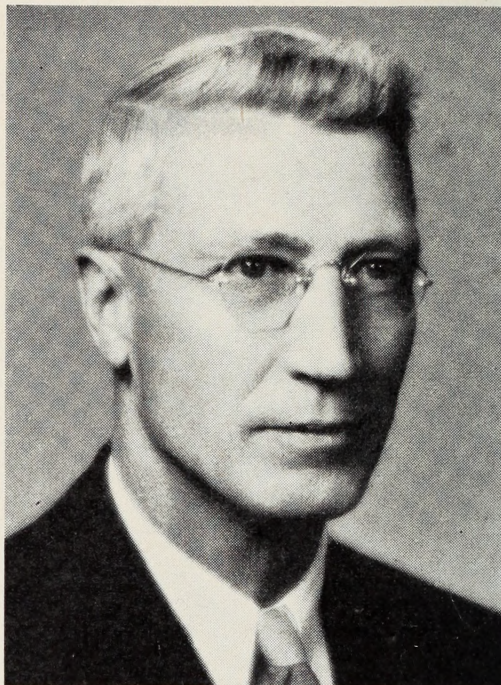


MILO D. ZIMMERMAN, secretary and director of Kable Brothers Company, is the son of Rev. Horace E. and Annie E. (Doub) Zimmerman and was born Oct. 7, 1894, at Tannersville, Pa. He graduated from the Hagerstown (Md.) High School, in June, 1912. Came to Mount Morris the same month and took a clerical position with Kable Brothers Company. Spent one semester at Carthage College, Carthage, Ill., in 1914. Entered Mount Morris College in September, 1914, and graduated June, 1920, meanwhile working part time at the printing plant and spending eight months in training camp during the war. He taught in Mount Morris College Academy during 1920-21 and was principal of the public school at Fairhope, Ala., 1921-22. Accepted position in sales department of Kable Brothers Company in 1922, elected to board of directors in 1927, and secretary of the company in 1931. He is a member of the Lutheran Church; charter member local post of the American Legion; Loyal Order of Moose; Sunset Golf Club; president of the Kiwanis Club, 1936; Grade School board 1924-26; president of the Community Chest 1937 and 1938; elected to Library Board 1937. He was married in December, 1915, to Hazel Kable and they have three children, Ward, Doris and Bryant.

not large enough for long. In 1909, the first section of the present building was erected. With characteristic foresight the structure was designed in such a way that additions could be made at a minimum cost and maximum of convenience. Subsequent events proved the wisdom of this plan, because ten years later fifty per cent more space was added, and on an average of about every five years thereafter the building

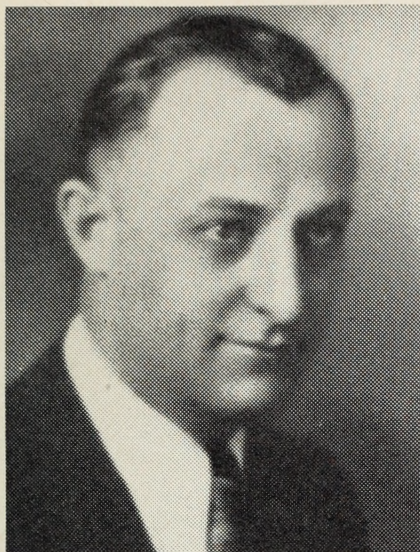
was enlarged, the latest addition having been erected in the fall of 1936. The floor space area in this fortieth anniversary year is 147,537 square feet—about two and three-quarter acres.

Contrary to the experience of most printers, the business operated profit-



HARVEY LONG has been connected with Kable Brothers Company since 1923, first as accountant and later as director and assistant treasurer. He was the son of John and Nancy (Bigler) Long and was born at Bradford, Ohio, July 31, 1882. He was of a family of eight children. He attended the country school near his home in Ohio and then came to Mount Morris College where he received his A.B. degree in 1904. He was active in athletics and he and Lloyd Holsinger organized and played on the first basketball team. After finishing college, he taught two years at Brookville. He married Anna Trostle in 1908 and they settled on a farm in Wisconsin for four years, then returned to Mount Morris where he taught in the high school for six years. He then taught two years in the Shattuck (Minn.) Military School and was principal of the Franklin Grove High School for three years. He then returned to Mount Morris again and has since been connected with Kable Brothers Company. He has been justice of the peace, president of the high school board, treasurer of Mount Morris Building and Loan Assn., and held various other responsible positions. Mr. and Mrs. Long have two daughters: Margaret, who married H. C. Mitchell, and Roberta, who married Earl Gabrielson.

Original from
UNIVERSITY OF ILLINOIS AT
URBANA-CHAMPAIGN

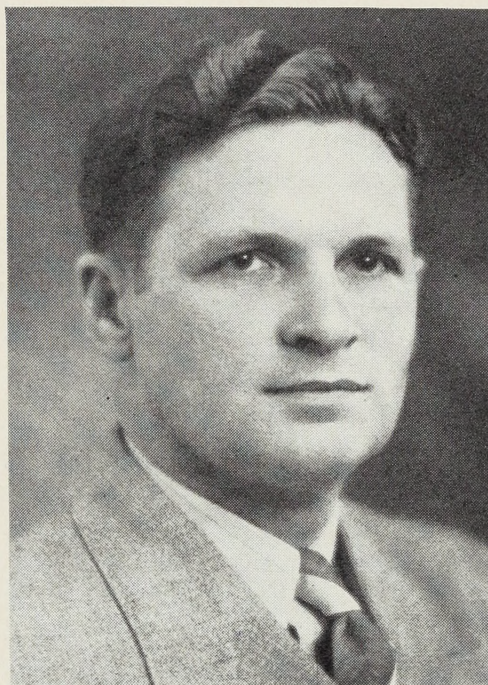


HAROLD D. ROSS, superintendent and director of Kable Brothers Company, is the son of a United Brethren minister, Rev. H. O. Ross, and was born at Adeline, Ill., July 4, 1896. His mother's maiden name was Mary Elizabeth Demuth. Harold is the second son of a family of seven children, the others being Frederick, Virginia, Julia, Douglas, Rachel and Charles. He attended schools where his father was pastor, including Castalia, Gladbrook and Moravia, Iowa, and Wall, S. Dak. He graduated from the Mount Morris High School in 1916 and attended the United States Military Academy at West Point in 1917 and 1918. He started work for Kable Brothers Company in 1913 on part time while attending school and started regular work in 1918, served an apprenticeship in the composing room, and worked his way up until he was appointed superintendent of the plant in 1931. He has been a member of the grade school board since 1927 and is a member of the library board. He is past master of the local Masonic lodge and past worthy patron of the Eastern Star. He is also a member of the American Legion, the Loyal Order of Moose, the Methodist Church, and a director of the Mount Morris Building & Loan Assn. Mr. Ross was married in 1921 to Dorothy Sharp Davis, daughter of Mr. and Mrs. Ben G. Davis. They have three sons: Harold D. Jr., William D., and Andrew S.

ably right from the start. Except for the year 1911, there is an unbroken dividend record from the time of incorporation to 1931, beginning at eight percent, dropping to two percent in 1910, and then raising to ten percent in 1920. This rate, including one stock dividend and several extras in cash, was maintained for eleven years. Fol-

lowing the trend of industry in general, profits dropped off sharply during the depression years following 1931, and dividend payments have been on a reduced basis since then.

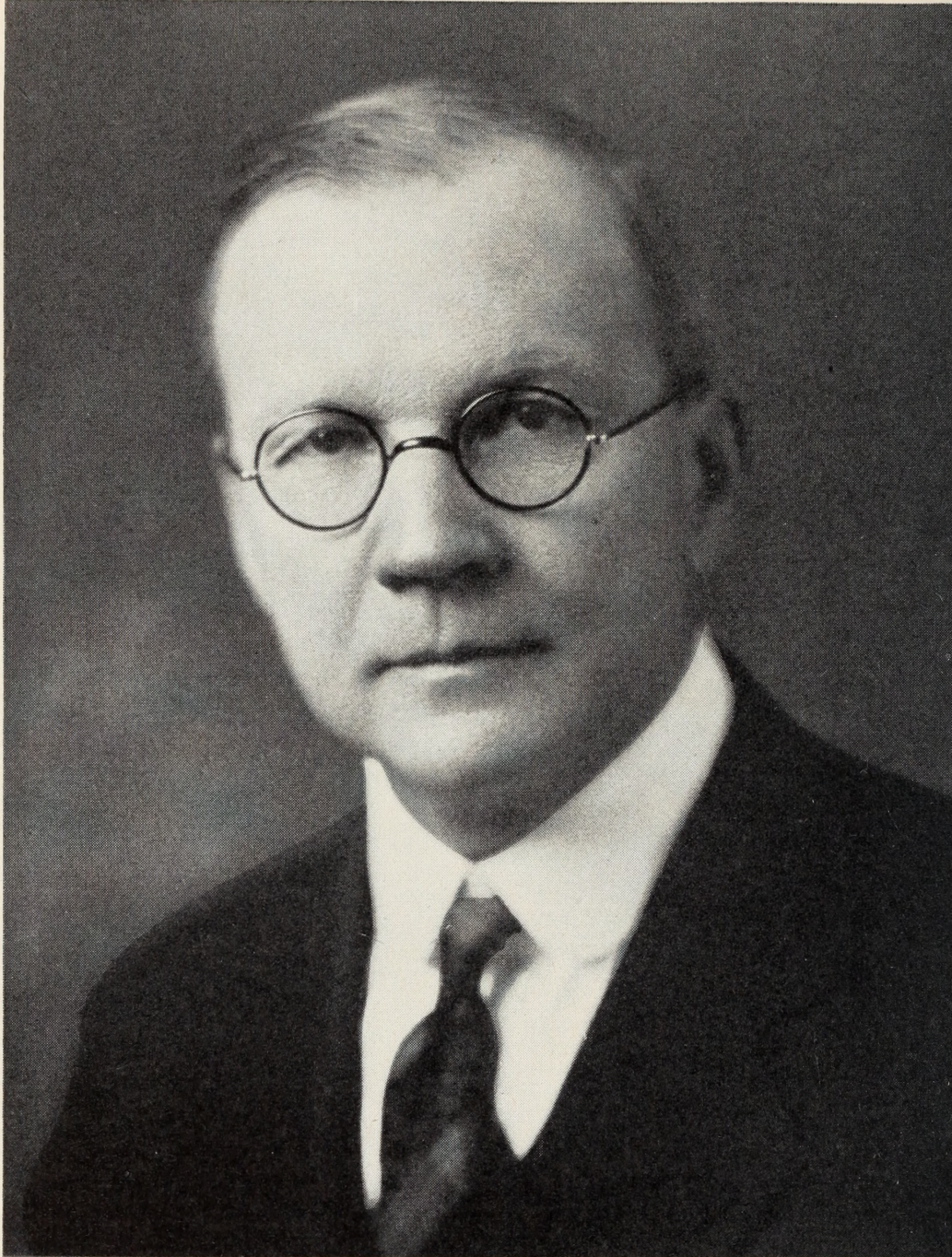
The business grew too rapidly to be financed entirely out of undistributed profits. Whenever an expansion program was launched, the capitalization of the corporation was increased, and the stock readily taken up either by old or new stockholders. Because the Company was making money and paying good dividends, securing additional capital was not a difficult problem. The \$800.00 which was borrowed in 1898 to buy out the Coggins plant was all the



MAURICE SAMSEL, production manager with Kable Brothers Company, is the son of Daniel R. and Helen M. (Stouffer) Samsel and was born in Mount Morris, Jan. 10, 1904. He graduated from the Mount Morris High School in 1921 and in 1923 started an apprenticeship in the composing room of Kable Brothers Company. After completing his apprenticeship he served as assistant foreman and foreman of the editorial department, assistant to the superintendent for one year and is now serving as production manager. He served two years in the National Guard as a member of the 129th Infantry Band. He is a member of the Church of the Brethren. Mr. Samsel was married in 1925 to Ethel Shaw and they have two boys: James Eugene and Gary Lee.

Original from

UNIVERSITY OF ILLINOIS AT
URBANA-CHAMPAIGN



HARVEY J. KABLE

HARVEY J. AND HARRY G. KABLE, twin sons of John and Elizabeth (Speicher) Kable, were born July 15, 1880, at Lanark, Ill. The father and mother were both of German descent, the former being a native of Pennsylvania and the mother came from Ohio. The family moved to Mount Morris from Lanark in 1882 and Mr. Kable engaged in the carpet weaving business. The twins started in the public school under Miss Lillie Farwell (Mrs. Harry Cushing) as teacher. They graduated in 1896 under Principal E. E. Winders. Harvey spent the next two years attending Mount Morris College (graduating from the academy in 1898) while Harry was learning the printing trade in the Mount Morris News and Brethren Publishing House plants. With this preparation of two years, the brothers bought the *Mount Morris Index* and embarked in the printing business. For many years they had a unique plan of exchanging jobs on the first day of each year. This continued until the death of Harvey in 1931. Outside of business, their hobby was music. They organized, maintained and played in the local band

Original from

UNIVERSITY OF ILLINOIS AT
URBANA-CHAMPAIGN

Digitized by
INTERNET ARCHIVE



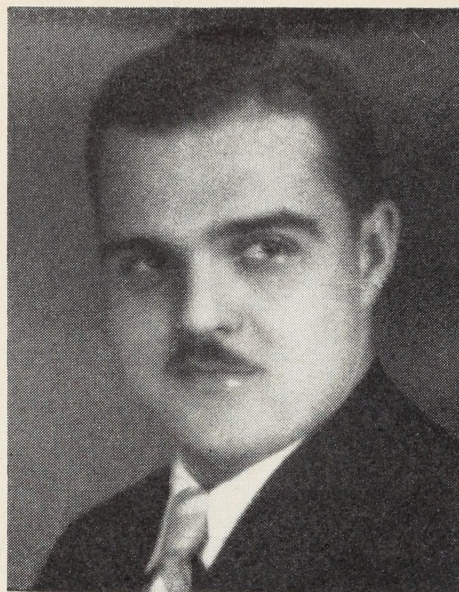
HARRY G. KABLE

for over thirty-five years and also sang in the Lutheran Church choir for about the same period.

Harvey Kable was married in 1903 to Miss Pearl Hershey, daughter of Mr. and Mrs. Daniel Hershey, and they have three children: Forrest, Justin and Virginia. He was taken ill in 1928 and passed away April 13, 1931, aged nearly 51 years.

Harry Kable was married in 1906 to Miss Edith Walkup, daughter of Mr. and Mrs. Chas. Walkup, and they have one son, Robert R. Mr. Kable is now president and treasurer of Kable Brothers Company, director and chairman of the board of Kable News Company, organizer and president of the Mount Morris Building and Loan Association. He is a member of the Masons, Consistory, Shrine, Moose, Kiwanis Club and the Lutheran Church.

The three sons of the brothers have completed their college education and are now actively connected with the Kable plant in responsible positions.



FORREST T. KABLE, eldest son of Harvey J. Kable, is connected with the sales department of Kable Brothers Company, and spends much of his time on the road. He was born in Mount Morris, May 13, 1907, and graduated from the local high school in 1925. He later attended the University of Illinois and the University of Michigan. He is married to Bernice Bruner and they have two daughters, Diane Lee and Joan. He was a member for six years of the 129th Infantry Band, Illinois National Guard.

new money invested in the business until incorporation in 1904. The capital structure beginning at that point grew as follows:

| | | |
|------|---------|-----------|
| 1904 |\$ | 15,000 |
| 1906 | | 35,000 |
| 1908 | | 100,000 |
| 1917 | | 150,000 |
| 1919 | | 250,000 |
| 1920 | | 500,000 |
| 1923 | | 750,000 |
| 1926 | | 1,000,000 |
| 1931 | | 1,250,000 |

Of the present total capitalization, \$250,000 is in preferred stock, all the rest being common. There are more than 400 stockholders, and although much stock is still held locally, there is a great deal that has found its way, through transfers and inheritances, to distant points. No one person or group owns a majority of the stock. A ten-year bond issue for \$35,000 was authorized in 1911, but only two-thirds of it

was sold and this was retired by 1915.

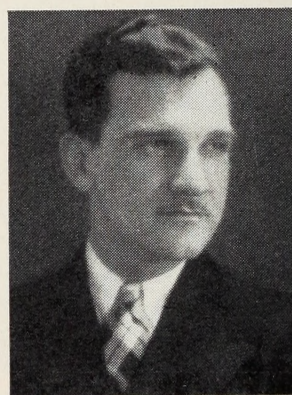
In its forty years of life, the Company has had four different presidents, one man, Joseph L. Rice, serving at two different times. The Board of Directors, except from 1927 to 1935, has always been composed of seven men. During that eight-year period there were nine. The lists of presidents and directors follow:

Presidents

| | | |
|-------------------|-------|-----------|
| Joseph L. Rice | | 1904-1907 |
| Arthur W. Brayton | | 1907-1922 |
| Joseph L. Rice | | 1922-1924 |
| Harvey J. Kable | | 1924-1931 |
| Harry G. Kable | | 1931- |

Directors

| | <i>Elected</i> | <i>Retired</i> |
|----------------------|----------------|----------------|
| Harry G. Kable | | 1904 |
| Harvey J. Kable | | 1904 1931* |
| Abram H. Rittenhouse | | 1904 1906 |
| Joseph L. Rice | | 1904 1931* |
| Arthur W. Brayton | | 1904 1922* |
| John H. Rice | | 1904 1907 |
| Henry E. Newcomer | | 1904 1905 |
| Samuel P. Mumma | | 1905 1912* |
| Ulysses C. Nye | | 1906 1908 |
| Nathaniel E. Buser | | 1907 1923 |
| John E. Tice | | 1908 1917* |
| Holly C. Clark | | 1912 1923 |



JUSTIN M. KABLE, second son of Harvey J. Kable, is in charge of Kable Brothers Company's Chicago sales and service office at 160 N. LaSalle St. He was born in Mount Morris, Dec. 17, 1910. He attended the local schools and spent two years at the Staunton Military Academy at Staunton, Va. He graduated from Carthage College in 1933. He married Velma Galor and they have two children, Philip Harvey and Valerie Ann. He was a member for three years of the 129th Infantry Band, Illinois National Guard.

Original from
UNIVERSITY OF ILLINOIS AT
URBANA-CHAMPAIGN

| | | |
|-------------------------|------|------|
| Solomon E. Avey..... | 1917 | 1935 |
| Fred J. Dean..... | 1922 | 1935 |
| James W. Watt..... | 1923 | |
| William J. Emerson..... | 1923 | 1935 |
| Milo D. Zimmerman..... | 1927 | |
| Samuel J. Campbell..... | 1927 | |
| Harvey Long..... | 1931 | |
| Charles E. Stuart..... | 1931 | 1935 |
| Harold D. Ross..... | 1935 | |
| Glenn O. Sensiba..... | 1935 | |

*By death.

From the time of its incorporation the Company has had only three secretaries—Harvey Kable, 1904 to 1910; Harry Kable, from that year until 1931; and Milo Zimmerman since then. The treasurer was either one of the two brothers for the entire period, with the exception of three years, 1930-1933, when that office was held by Samuel J. Campbell. For a number of years, Hazel Kable (now Mrs. Milo Zimmerman) served efficiently as assistant treasurer. Harvey Long has held the office of as-



HARRY F. LONGMAN is one of the very first employes of Kable Brothers Company, having started work in November, 1906. For a number of years he has been foreman of the bindery. He was born at Keedysville, Md., Dec. 29, 1872, and is the son of John Longman. He married Lulu E. Kable and they have three children, Faith (Mrs. Ray Siebert), Joyce (wife of Rev. Richard Roth), and Harold.

.....
 sistant treasurer since 1927. Officers at the present time are: President and Treasurer, Harry G. Kable; Vice-president, Samuel J. Campbell; Secretary, Milo D. Zimmerman; Assistant Treasurer, Harvey Long.

On April 13, 1931, after three years of failing health, Harvey J. Kable died. Until this time the brothers had been inseparable, not alone in the business enterprise which they had brought to such a magnificent success, but outside of business.

Before 1902, all type was set by hand, and the lone press was operated by man power. In that year the first linotype was purchased. This necessitated the installation of power equipment, and a small gasoline engine served the purpose in 1904. In that epochal year, when it was found necessary to have more power to run the new press to print *The Mystic Worker*, a bigger engine was bought and hooked up to a line shaft. This furnished power both for press and linotype. From that time on new equipment was added as the plant was successively enlarged to handle the steadily increasing volume of

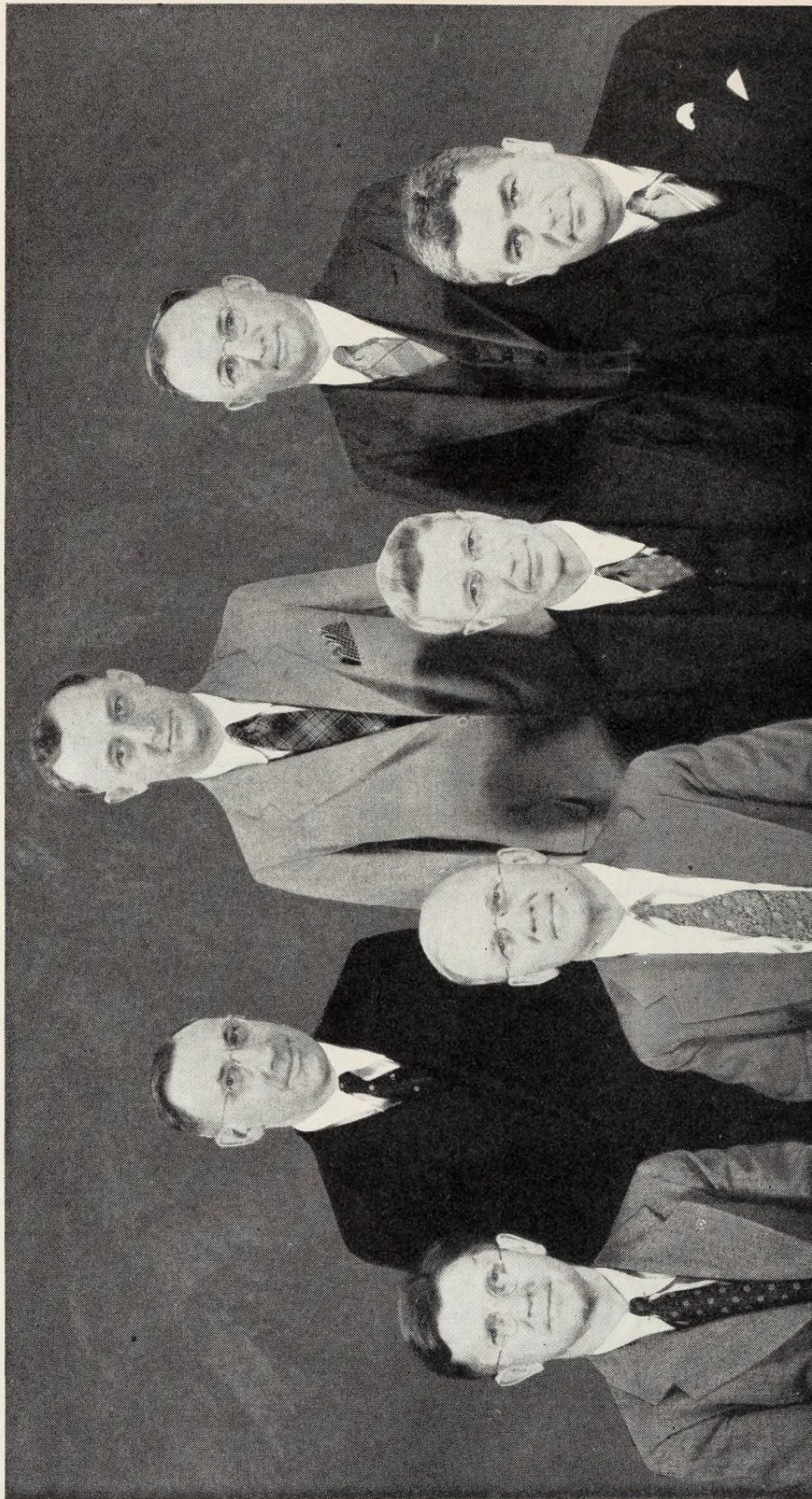
Original from

UNIVERSITY OF ILLINOIS AT
 URBANA-CHAMPAIGN

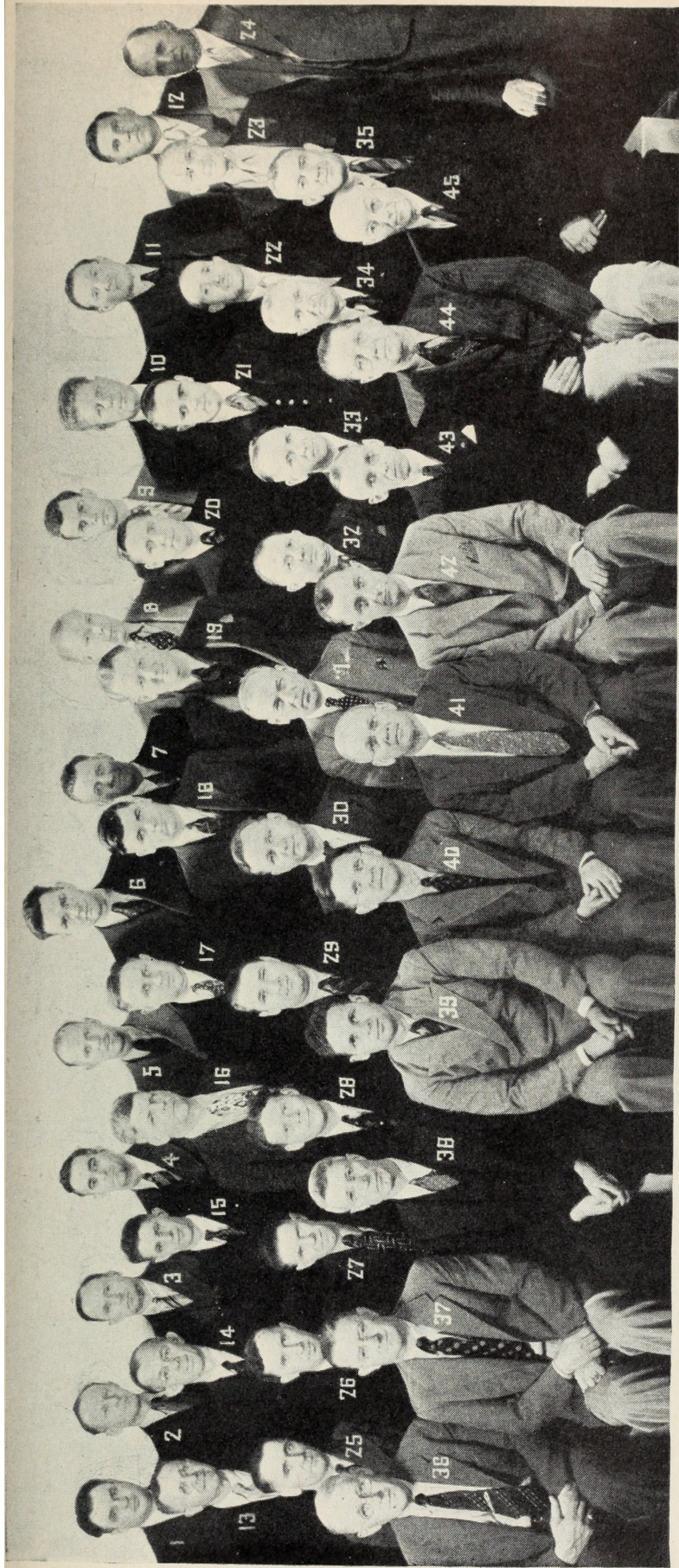


HERLOCK E. LONGMAN has been building superintendent and foreman of stock department in the Kable plant since July 1916. Previous to that he was employed by the Buser Company for 21 years as carpenter. He is the son of John Longman and was born in Washington County, Md., Oct. 28, 1875. He married Elsie Lookabaugh and they own a fine home at 110 E. Center St. For many years he was a valued member of the local band and served three years with the band at Camp Grant with the 129th Infantry.

Digitized by
 INTERNET ARCHIVE

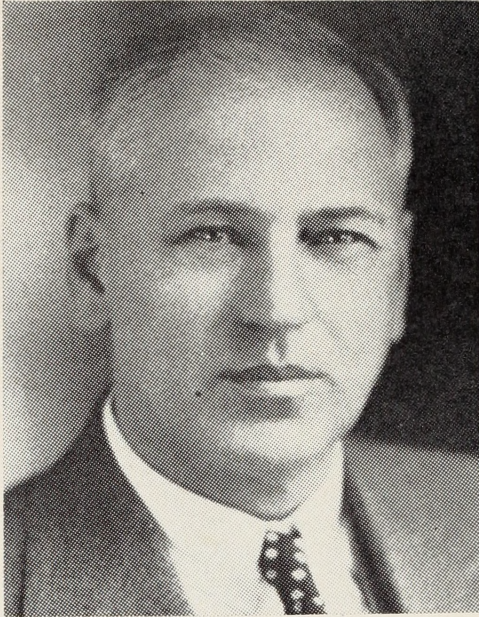


BOARD OF DIRECTORS of Kable Brothers Company. Front row, left to right: Milo D. Zimmerman, secretary; Harry G. Kable, president and treasurer; Harvey Long, assistant treasurer; S. J. Campbell, vice-president. Upper row: J. W. Watt, director; Harold D. Ross, director and superintendent; Glenn O. Sensiba, director.



EXECUTIVES AND FOREMEN OF KABLE BROTHERS COMPANY, 1938

- (1) Leon Light, assistant foreman bindery
- (2) Ray D. Blecker, foreman folder department
- (3) Warren Burchby, asst. foreman composing room
- (4) Adrian J. Cattoen, asst. foreman rotary presses
- (5) Donovan Mills, foreman editorial department
- (6) Paul Kent, head janitor
- (7) Frank Hilger, supt. bindery and mailing depts.
- (8) Theodore Swan, night foreman composing room
- (9) Robert R. Kable, assistant to superintendent
- (10) James Rouse, night foreman rotary presses, third shift
- (11) James Fisher, foreman rotary press department
- (12) Harold G. Miller, night foreman rotary presses, second shift
- (13) S. E. Avey, foreman mailing department
- (14) Walter Klepfer, manager job department
- (15) Edwin S. Ports, assistant foreman mailing dept.
- (16) Charles Freedlund, night foreman cylinder presses
- (17) Ernest Yerkey, asst. foreman flat bed presses
- (18) Dudley Allen, asst. night foreman flat bed presses
- (19) Harold C. Pearce, asst. night foreman composing room
- (20) Douglas Ross, night foreman editorial dept.
- (21) Leland Rittenhouse, assistant to production manager
- (22) Louis Incontro, night foreman rotogravure press
- (23) Harry F. Longman, foreman bindery
- (24) Walter E. Berg, manager engraving department
- (25) Earl Wible, night foreman folder department
- (26) John Glotfelty, asst. foreman mailing list dept.
- (27) Axel A. Johnston, foreman maintenance dept.
- (28) Myron C. Wheldon, foreman rotogravure press department
- (29) Myron W. Yorke, foreman rotogravure processing department
- (30) Otto Herzfeldt, assistant foreman flat bed presses
- (31) Adam E. Hecker, foreman mailing list dept.
- (32) George Priller, foreman electrotype foundry
- (33) Wm. Jiracek, asst. foreman electrotype foundry
- (34) Wm. Breitzke, foreman flat bed presses
- (35) Edward Luther, night foreman electrotype foundry
- (36) Herlock E. Longman, foreman stock department and building superintendent
- (37) Howard Bronson, purchasing agent and personnel director
- (38) Harvey Long, assistant treasurer
- (39) Maurice Samsel, production manager
- (40) Milo D. Zimmerman, secretary and sales manager
- (41) H. G. Kable, president and treasurer
- (42) Harold D. Ross, superintendent
- (43) Charles Edson, accountant
- (44) Arthur S. Barre, foreman composing room
- (45) Fred Colvin, night foreman bindery.



A. E. HECKER, foreman of the mailing list department of Kable Brothers Company, was born April 16, 1887, at Sterling, Ill. He is the son of Thomas and Alice (Journay) Hecker. Mr. Hecker came to Mount Morris as a student of Mount Morris College and after several years spent in Montana, returned to Mount Morris to take charge of the important mailing list department of the Kable plant and has under his direction over a hundred workers, mostly girls. In May, 1918, he married Irene C. Ewert of Chicago who was a previous employe of the company.

business. In 1923, the field of general magazine printing began to open up, requiring the installation of high-speed presses printing from rolls instead of sheets. The first press of this character was put into operation in February, and additional machines of the same type added over a period of the next nine years. In 1936, it was decided to branch into the field of rotogravure printing. An addition was built to house this department, and the first press, costing approximately \$100,000, was put into operation in April, 1937. Space has been provided for two more presses of the same type when the volume of business warrants their installation.

The rapid growth of the business developed a number of problems not directly connected with the operation of a printing plant. In 1910, a petition was presented by the printers requesting the privilege of forming a union. This

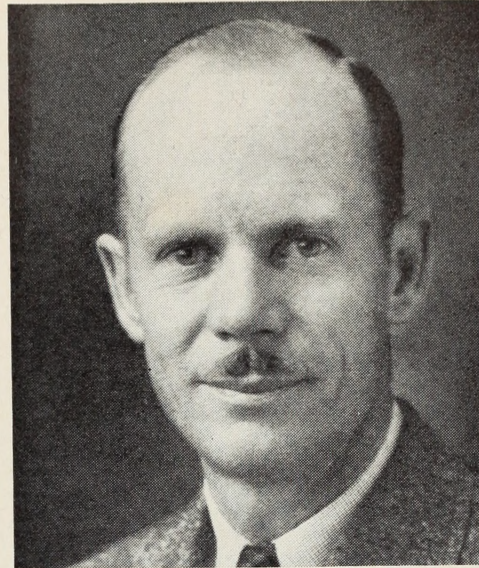
was promptly granted, and the plant has been operated under union labor conditions ever since. The housing problem began to be a very pressing matter about 1920. In numerous ways the Company assisted employees to build or buy homes. In 1930, a large tract of land west of the plant was acquired and laid out in lots for home building. This is now known as the Kable Addition. The Company was a prime mover in the organization of the Mount Morris Building and Loan Association in 1925, and assisted materially in the village paving project two years later. In order to provide modern hotel accommodations for the many visitors and customers coming to town, Hotel Olson was purchased in 1922, completely renovated, and renamed Kable Inn. Following the Mount Mor-



CHAS. C. EDSON, accountant with Kable Brothers Company, was born at Middletown, Ohio, March 30, 1896. He is the son of Chas. E. and Estella (Runyan) Edson. He attended the grade and high schools at Middletown and the Ohio State University at Columbus. He served as sergeant first-class in the medical department of the U. S. Army during the World War. He is past commander of the local American Legion Post. He served one term on the library board and has been a member of the Village Board of Trustees since May, 1935. Mr. Edson was married in 1920 to Gladys Avey and they have a daughter, Mary Bea.

ris College fire in 1931, \$25,000 was pledged by the Company to cover half the cost of erecting a new gymnasium, and when this institution closed its doors a year later, the entire college premises were acquired. All but Old Sandstone have been subsequently sold, this building now being occupied by the engraving department, the publishers of Poultry Tribune and Woman's World, and the public library. From 1919 to 1921 a total of \$21,500 was paid out on an employee profit-sharing plan, and Christmas gifts in the form of additional paychecks were distributed on several occasions. Group insurance was carried for awhile, the Company paying the entire premium. This has since been discontinued. There is now a welfare association, through which employees may secure insurance virtually at group rates and financial help in time of emergency.

In 1932, a subsidiary, Kable News Company, was organized for the pur-



DONOVAN MILLS is foreman of the editorial department. He was born at Linden, Iowa, Dec. 7, 1900, and first came to Mount Morris in July, 1923. He married Ethel Lee Helm and they have two daughters, Sabra Nell and Delina Lee. Mr. Mills is a competent musician and has been a valued member of the local band. He is well known for his poetic ability and his work has appeared for many years in the *Anthology of Newspaper Verse*.



WALTER O. KLEPFER, manager of the job department of Kable plant, was born at Kokomo, Ind., Jan. 19, 1892, and came to Mount Morris from Aurora in May, 1930, after serving 16 years as foreman and superintendent of the printing plant at Mooseheart, Ill. He married Mable M. Jeffery of Marion, Ind., Sept. 20, 1911, and they have three children: Elsie Mae, Robert and Rosemarie.



JAMES ROUSE is night foreman of the rotary press department. He was born at Osborne, Kans., Feb. 16, 1890, and came to Mount Morris in March, 1924. He married Mildred L. Lowe and has seven children: Eugene, Margaret, Alma, Arlene, Mildred, James and Barbara. At present he is chief of the local volunteer fire department.

Original from
UNIVERSITY OF ILLINOIS AT
URBANA-CHAMPAIGN



A BUSY day at the Kable plant in 1938. Workers' cars parked on Sunset Lane at south of plant.

pose of handling the newsstand distribution of some of the magazines produced in the printing plant, as well as similar periodicals printed elsewhere. The business did not prosper, and in order to forestall any loss, it was sold to the then vice-president and treasurer of the Company, Samuel J. Campbell, and subsequently all stock interest was disposed of. Under Mr. Campbell's management the business took a quick turn for the better, and at the present time is employing approximately 125 people. The quarters are in the former College Hall building.

In a word, the unknown *Index* of 1898 has grown in forty years to the nationally known Kable Brothers Company. The initial working force of three, drawing a total weekly pay of probably \$15.00, has become today a force of over eight hundred people, who, in one record week of 1937, were paid \$26,873. The \$800 investment has increased to more than \$1,800,000 today, and the estimated output for the first year of business will be multiplied almost 4,000 times in this fortieth anniversary period. But figures do not tell the whole story. Only people living in Mount Morris today, who look back to

the 90's, can appreciate the transformation in the community wrought by this successful business enterprise.

The following record of the volume of business done in each of the past forty years shows at a glance an almost uninterrupted growth, there being only one recession—in 1918—prior to the great depression years of 1931-1936:

| | |
|------------------------|---------|
| 1899 (estimated) | \$ 900 |
| 1900 (estimated) | 1,500 |
| 1901 | 2,234 |
| 1902 | 2,857 |
| 1903 | 4,794 |
| 1904 | 4,954 |
| 1905 | 9,560 |
| 1906 | 13,707 |
| 1907 | 17,569 |
| 1908 | 25,714 |
| 1909 | 60,797 |
| 1910 | 87,086 |
| 1911 | 101,878 |
| 1912 | 118,047 |
| 1913 | 135,495 |
| 1914 | 152,563 |
| 1915 | 196,888 |
| 1916 | 219,677 |
| 1917 | 276,163 |
| 1918 | 249,098 |
| 1919 | 352,402 |

Original from
UNIVERSITY OF ILLINOIS AT
URBANA-CHAMPAIGN