



CROWELL School, Dist. 121, a one-room school. Built in 1872, it replaced an earlier structure.



Little Markers

For Ogle County One-Room Schools

VK

#####

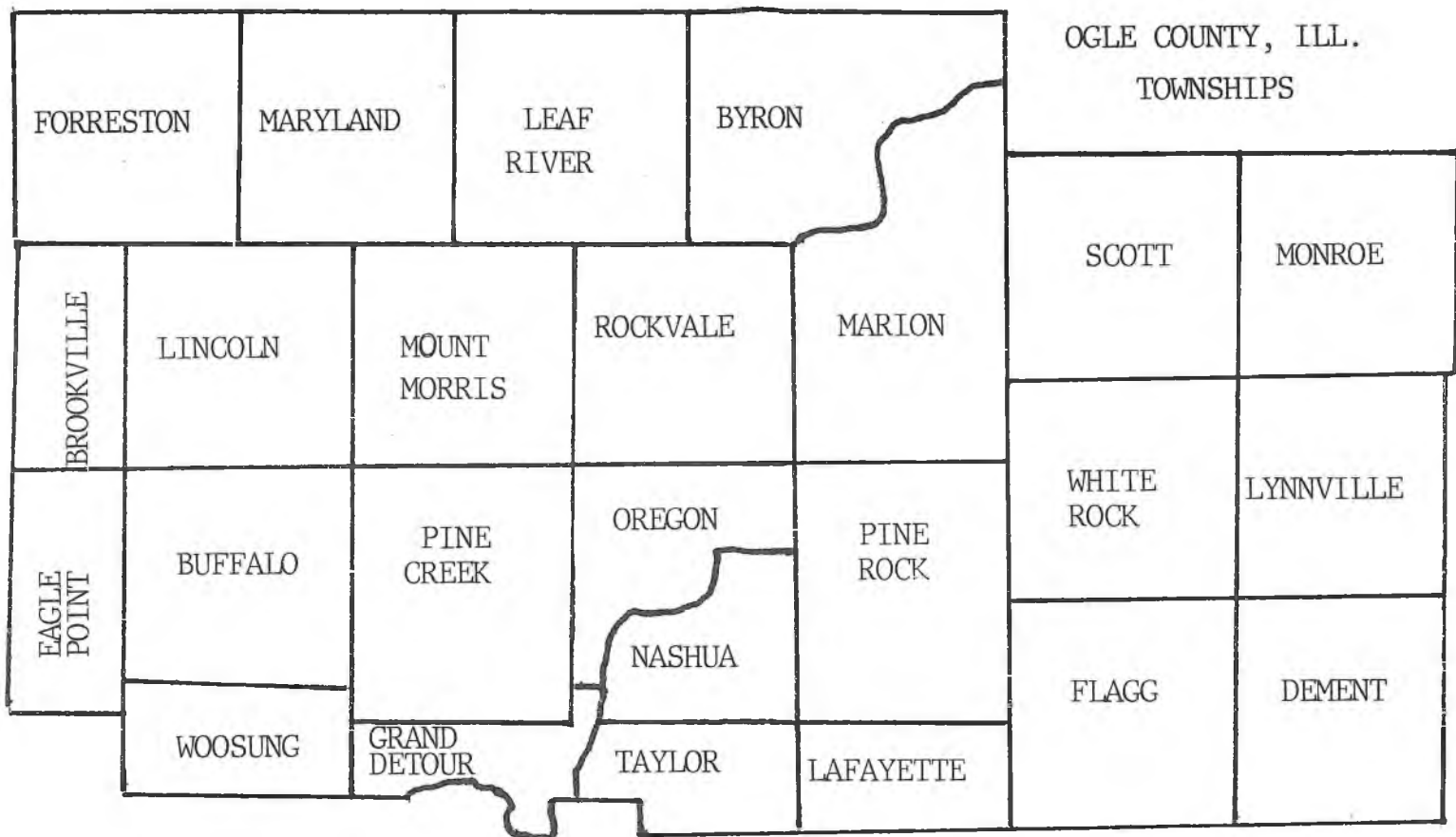
LOCATING, GEOGRAPHICALLY, THE ONE-ROOM SCHOOLS IN OGLE COUNTY,
ILLINOIS, ALONG WITH DISTRICT NUMBERS, NAME OF SCHOOL, TOWNSHIP,
AND SECTION OF LAND ON WHICH THE SCHOOL STOOD.

#####

by Leonard J. Jacobs
Rochelle, Illinois

May 1990
L. J. Jacobs

#####



LITTLE MARKERS

For those of us "walkers" who had the privilege, or bad luck, depending on how each of us felt about it, of attending a one-room elementary school in Ogle Co., Illinois, we often find ourselves "boring the dickens" out of the younger generation with our tales of derring-do while being a pupil at the local school in our rural neighborhood. We say things like; "Thats right! It was so cold in school one morning, the Regulator clock on the north wall stopped running." Without stopping to catch our breath, we might add; "One winter we had so much snow, we had to make tunnels under fourteen-foot drifts, along the creek road, in order to get to school." Once at a school reunion, we heard a grandfather tell his grandson that; "I had to learn how to spell M-i-s-s-i-s-s-i-p-p-i a-n-d i-t-s t-r-i-b-u-t-a-r-i-e-s by Christmas of the first grade, sure enough!"

Indeed, we could go on and on like that, but all that kind of talk just won't placate the bulldog of history.

We are gathered here today at this old school, not to praise or denigrate the system, but rather to point out "where it happened", and in that way we will be putting up "little markers" for locating, for history's sake, the sites of the now defunct institution known as the "rural school."

If we can put up these historical markers, teeny ones, the younger generation can point to the spot and say to their grandchildren; "Right there, right there, thats where my grandma and grandpa went to school! You kids may not believe this but they had to swim icy streams, and fight off wild animals on their way to the school that stood right here!" And the feats go on! (Cont.)

Q. If Ben was told on a nice spring morning, while school was in session, to go out on the front stoop and "dust the erasers", how long would it take Ben to get the job done? A. Probably quite a while.



CYCLONE school Dist. 114 In 1864, the school land was in the NE corner of the Isaac Trask farm. CYCLONE enjoyed two front doors. It got its name from a cyclone that destroyed its predecessor in 1892.



CEDAR BLUFF school Dist. 69 Although the school does not appear in the 1864 plat book, the land was owned then by E. Wagoner. This picture was taken in 1897. The school boasted blinds for the windows.

Limerick School.

Report of Scholarship and Deportment of *Charlie Limerick* for Fortnight ending *Aug*, 1893.

Reading,	94
Arithmetic,	91
Penmanship,	60
Orthography,	94
Grammar,	91
Geography,	91
Physiology,	
U. S. History,	
Department,	96
Absent, ... days, tardy, /... times.	

Pupils please return with parent's signature.

H. J. Hoyle
Teacher.

H. C. ...
Parent.

Charlie's 1893 report card.

(Cont.) The pupils who attended a log schoolhouse could, we are sure, go on for hours about conditions and drawbacks of those old buildings. But here in Ogle county, schools of that material prevailed only from 1836 pioneer days until the early 1870's. By this latter date, wooden frame buildings (or brick or stone) had replaced the sawn logs. A log-school walker could have said; "Why, listen, we had to sit in school all day when the temperature hovered around the zero mark, and that was the inside temperature!" Well, it is extremely difficult to top that one.

The forerunner of the public (or free) school system in the United States was the Enabling Act passed by Congress in 1818. Clause One of the Act "gives the state the Section numbered 16 in each township for the use of that township." So, the money acquired from the sale of the 16th section (640 acres) of government land (in each township) went into the school fund. Later, this act was enlarged on by the Illinois legislature.

S.A. Briggs, editor of the ILLINOIS TEACHER said, in 1864; "Recognizing the just moral claim of every child to an education, the legislature of Illinois in February of 1855 passed 'an act to establish and maintain a system of free schools'. This was the first strictly free-school law ever adopted in the state. By the provisions of this act, the common school fund consists of

certain monies derived from various sources, denominated the permanent school fund."

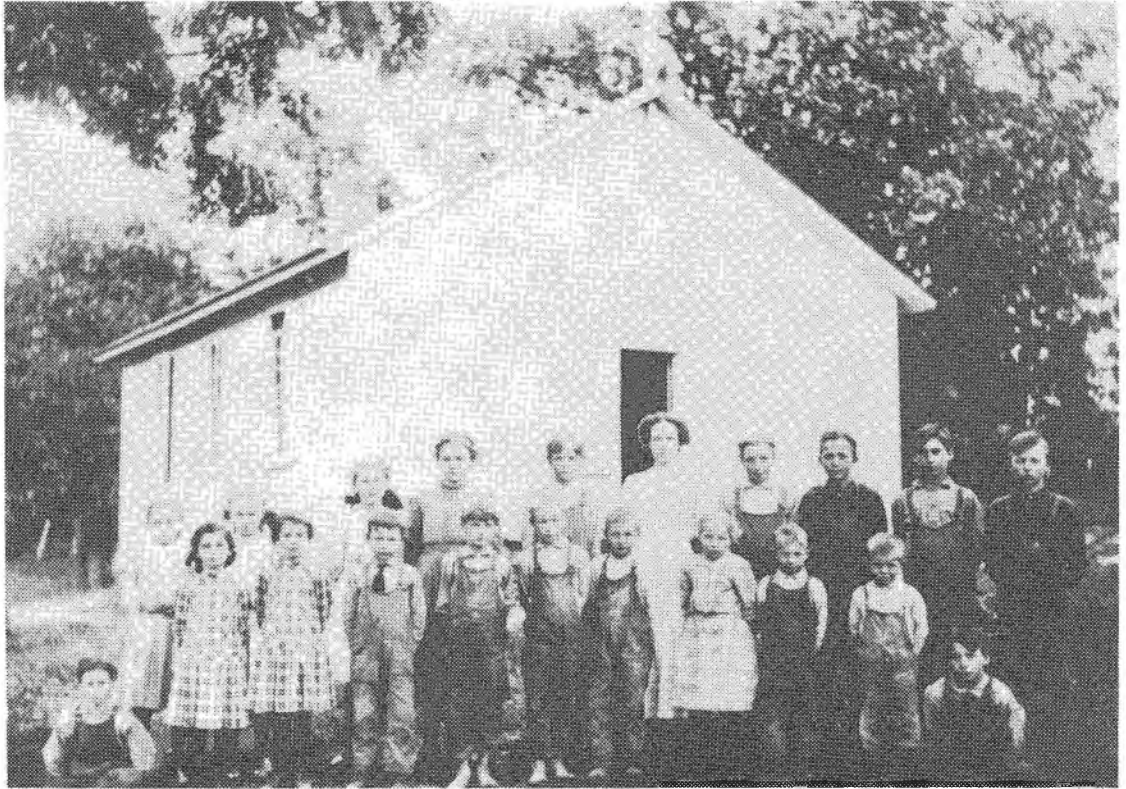
Briggs went on to say; "The supervision of the state is vested in a State Superintendent of Schools, elected biennially, and the local superintendence of each county is in the hands of a county school superintendent. His duties are to apportion the state funds, to visit as often as practicable the several schools in his county, and to carry out the advice and instructions of the state superintendent."

"Each township is placed for school purposes in the hands of three trustees. It is their duty to lay off the township into districts, so as to suit the wishes and the convenience of the inhabitants of the township, and they also apportion the school funds among the districts. Section 16 in every township is set apart to be sold for school purposes. Each district elects three directors (one of whom goes out of office annually or by vote of the district) or for such longer time as the latter may desire. The directors also have the power to improve school houses, and procure fuel, furniture, libraries, and apparatus."

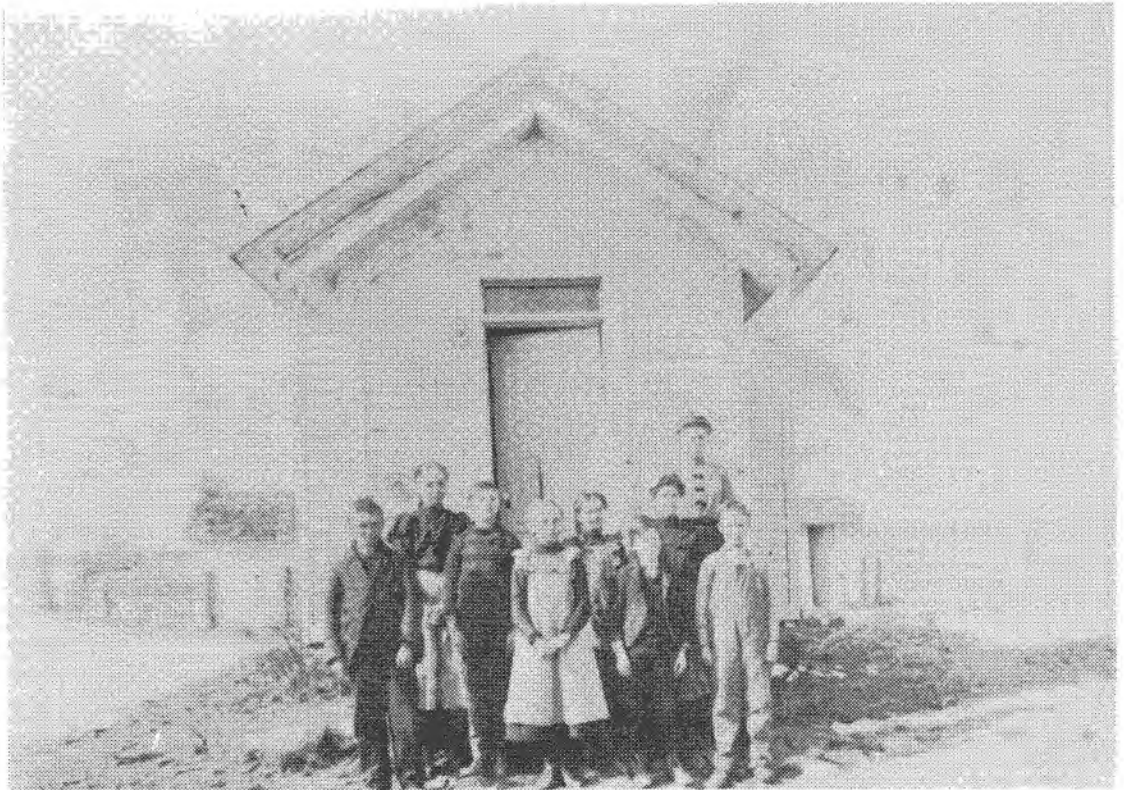
Sitting around the campfires of today, we seldom hear a song of praise for the Board of Directors of the one-teacher schools. Composed of a president, clerk, and director, they were, verily, the underpaid volunteers of yesterday, no less.

Retired Ogle county rural school teacher Gladys Hersch Hansen had this to say, in 1990, about her board of directors; "The three directors of my school (Cont.)

"The country school is a democratic community institution, representing the whole community. In this respect the school stands alone, and in sharp contrast with all other rural institutions; since the church usually means just the church members; the Grange has its own patrons, and even the farmers institute but its own following. With the school on the other hand, every individual in the neighborhood has a vital connection, owing to the taxes it necessitates, if for no other reason." COUNTRY LIFE AND THE COUNTRY SCHOOL Mabel Carney 1912



RIVERVIEW school Dist. 94 Previous to this location, the school stood along the river, on the John Sheaff farm. The pictured location is near the middle of the area known as "Razorville", a geographically undefined area in Rockvale.



MORRILL school Dist. 120 In 1864, before the school was built, the land was on the farm of Henry Mix. The ca. 1903 photo shows the school to be one of the smaller schools in the county, if not the smallest. A new school was built later.

1873
April 5

At the annual School Meeting held in the School House on the 5th day of April 1873 Public Notice having been previously and legally given. The meeting was called to order by John Cummins president of the board of directors, on motion by the house the election took a vote by ballot to elect one Director Wm. H. Ferguson was elected Director for the term of Three years

There was a vote taken to see if we would build a new school house this year in Dist. No. 2 in the Town of Pine Rock it was laid over for one year
Jno. Thompson Clerk,

1874
April 4

At the Annual School Meeting held in the School House on the 4th day of April 1874 public notice having been given

"1873
April 5th"

"At the annual School meeting held in the School House on the 5th day of April 1873, Public Notice having been previously and legally given, The meeting was called to order by John Cummins president of the board of directors, on motion by the house the election took a vote by ballot to elect one Director, Wm. H. Ferguson was elected Director for the term of Three years. There was a vote taken to see if we would build a new school house this year in Dist. No. 2 in the town of Pine Rock, it was laid over for one year. Jno. Thompson Clerk" Above is an example of an annual school meeting. "Dist. 2" became Dist. 117 later. The next year, the board again decided to postpone a new school building.

(Cont.) were truly public servants. They spent lots of time in the successful operation of their school. They mowed the lawn (after a summer of weed growth) before school started in the fall, hauled in cobs and wood, and had coal delivered. They spent the district's money with caution and wisdom, and I looked to them for advice and help." (The overwhelming percentage of Directors were farmers, who lived within the district boundaries.)

Before we examine the locations of the Ogle county rural schools, we would do well to address ourselves to the many "parts of the whole." Locations of the sites of the schools had to do with township, district, and sections (of land).

Townships came about in our county in 1850. (See Kett's HISTORY OF OGLE COUNTY 1878.) Previous to that time, public affairs had been under the control of a Board of County Commissioners. In the general election of 1849, the public voted in a system of township organization.

The original twenty townships were; Brooklyn, Brookville, Buffalo, Byron, Eagle, Flagg, Grand Detour, Harrison, LaFayette, Leaf River, Lynnville, Marion, Monroe, Mount Morris, Nashua, Oregon, Pine Creek, Taylor, and White Rock.

However, changes in names and boundaries of the townships were made between 1850 and 1880. Harrison's name was changed to Maryland (township). Brooklyn became Rockvale, and Eagle became Pine Rock township. Haldane (later changed to Lincoln) was formed out of parts of Mt. Morris and Brookville townships; Dement was formed out of a part of Flagg; Forreston was created out of parts of Maryland and Brookville townships; and Eagle Point was carved out of part (Cont.)

T. 24, R. 9

x

Office of Township Trustees, 88
Oct 3rd 1870

The undersigned, President and Clerk of Board of Trustees of Schools in Township 24, Range 9 in Ogle County, Ill., do certify that the following is a correct plat of the School Districts in said Township, as now organized.

F. W. McNeill Clerk. *A. Newcome* President.



Filed for Record the 14th day of Nov A. D. 1870 and recorded the _____ day of _____ A. D. 18____
Edmund Woodcock COUNTY CLERK.

The 1870 Mount Morris township Board of Trustees plat of their school districts shows that the layout of a district was not a "four-square" configuration, resulting in some pupils walking "quite a piece". Dist. No. 1 is the Mt. Morris school district, in the old numbering system.

640 acres	640 acres
one mile	one mile

The ideal school district with a centrally located school.

6	5	4	3	2	1
7	8	9	10	11	12
18	17	16	15	14	13
19	20	21	22	23	24
30	29	28	27	26	25
31	32	33	34	35	36

Lincoln, a 36-section township, and its distribution of 9 schools.

(Cont.) of Buffalo. And the last change was made on September 15, 1880 when Woosung was created out of another part of Buffalo township. This made a total of 25 townships, and it remains so today.

If we walk over here, back of the furnace, to the Ogle county map, we can readily see that the townships therein vary greatly in total area. We have in the county some that are larger than 36 sections, for example; Marion township, and some that are smaller, such as Grand Detour. Those two types are called civil, or political townships. We also have some 36 section-townships, such as Lincoln. Generally, a 36-section township is called a congressional township. But some of those can be political.

Remembering that a school district contained, "on paper", 4 sections of land, it is quite obvious that Taylor Twp. would have less rural schools than, say, Flagg. On paper, Flagg should have had 9 rural school districts.

As far as the distribution of schools is concerned, Lincoln had the most equitable. That is to say, a typical pupil in that township, would have had about the same distance to walk as would a walker in another part of the township. There were three schools in the northern tier, three in the middle tier, and three in the southern part of the township.

We have said that, supposedly, a district contained four sections. Knowing the farms of "yesteryear" were smaller than today, we can, in a fashion, arrive at an estimate of the number of families that would reside within a district.

Let's go over to the north blackboard and do some 'rithmetic. Uhh, let's say a farm of then contained 120 acres. So we divide 120 into 640 (acres), and, we can say that about five families lived in a section. Without dropping the chalk, we multiply five times four (sections), and that gives us the number of families, on paper, that would live in a district.

But to arrive at an estimate of the number of walkers in a school is just that; an estimate. The number of children in the district depended on various factors, such as; the ethnicity of the community; the prevailing religion of the area; how productive the land was; and/or, how established the district was in number of years since settlement. In estimating the number of pupils in the district, we only have to look at the records, and they tell us that the (Cont.)

"Friday, May 7 was the last day of school at HICKORY RIDGE, and the teacher, Miss Myra Young, and her pupils enjoyed a picnic on a very pleasant day."

Dedication of Boulder

Marking Site of the
First Public School
Building in Ogle Co.

Lafayette Grove---September Seventeenth
Nineteen Hundred Nine



Mrs. Barton H. Cartwright nee Chloe J. Benedict

Who taught the first Public School in
Ogle County in 1836.

"Souvenir Program"

STONE STEP

FROM

First Public School House in Oregon

Built on This Site in 1839

Dedication of Marker

Sunday, July 28, 1940

4 P. M.

Post Office Block, North Fifth Street

OREGON, ILLINOIS

HOSTS:

Henry Cottlow, Postmaster
Malcolm Cann, Assistant Postmaster
John F. Putnam, President Board of Education No. 218
Emil M. Weyrauch, President Board of Education No. 88

PRESIDING:

W. L. Pickering, County Superintendent of Schools

Left; souvenir of "first school in Ogle County"
marker dedication. Right; souvenir of dedication
of marker of Oregon's first school.

(Cont.) enrollment fluctuated from district to district. Some were "small schools" (small enrollment) and some were "large schools" (large enrollment), but the total enrollment was usually in the 10 to 20 range.

The distance a pupil had to walk to get to school varied. A few kids merely had to "walk across the road" or walk a "quarter mile" but most had to walk between 1 and 2 miles (one way). Distances could be lessened if the father could persuade the neighbor (whose farm lay between school and "home") to agree to allow the kids to "cut through the field". This would cut down the distance by not having to "walk around the road". This GOOD neighbor would usually ask the father to have his children walk "Indian file", thereby cutting down on the widespread packing of the soil, or hurting crops such as winter wheat.

In our research, we found that on only one occasion did it happen, in Ogle county, that two schools were located in the same section of land, however, those two schools were on extreme sides of the section. This happened in Section 14 of Buffalo township, and the schools were JUDSON and COTTAGE HILL (which were districts numbered 20 and 21 respectively).

The system of giving school districts numbers, county-wide, started in 1902. Before then, each township had their own numbers, say, one through nine. For instance, Pine Rock district number 2 became district 117 in 1902. As another example, what had been district 6 in Forreston township became Ogle county district 11 in 1902. That numbering system in 1902 placed district number 1 in the southwest corner of the county (and that was BARCLAY school). As the system moved north through Eagle Point township, the numbers went up. When the northwestern corner of the county was reached, in Forreston township, the system leapfrogged back to Woosung Twp. in the southern part of the county. Again the system moved north, and when the northern edge was again reached, the system again leapfrogged south, and the process was repeated. Eventually the highest number (177 VOGT) was reached in the northeastern corner of the county which is Monroe township.

Some other remarks should be made concerning district numbers. We have, in our pages of site-locations, included "town districts" such as Davis Junction and Oregon. Also, some districts located on or near the county line, were given numbers in the 200's. One example being RIVERSIDE which was in Taylor township bordering Lee county. Some omitted district numbers, such as 4 and 35, were districts in Ogle county but those children attended a school in another county. (But that applies only to district numbers between 1 and 177.)

Before 1909, a controversy started in the county having to do with where in the county had the first school been held (after the area was settled.) The two "contenders" were a site in Buffalo Twp. and the other was located in LaFayette township. Buffalo claimed the location was at Buffalo Grove (a community west of Polo.) As evidence, Buffalo used the 1859 booklet written by Henry Boss which said Buffalo Grove was the first. However, LaFayette also came up with some evidence that backed its claim.

Finally, the Ogle County Board of Supervisors was asked to rule on the matter. Their decision was that a school in LaFayette Twp. was the first school in the county "built for that purpose". To emphasize the point, the Board had a 3-ton boulder moved to the spot, in 1909, and had it inscribed with the appropriate words, for history's sake.

When that LaFayette school was in session, it lay in Section 4, and was located on "the stage coach road to Grand Detour." However, that road has been discontinued, and the site is now some distance from a public road, and is on private land.

(Cont.)

Some kids liked to wolf down their packed lunch so that they could go outside and play. Some of the games they played were Pom Pom Pullaway, Ante-I Over, Fox and Geese, Prisoner's Base, and the old standby; softball. This latter game could lead to a pane in the neck for a school director when he would have to come to school to replace a broken window.

In 1859, the school trustees purchased a corner of Conrad Eychaner's acreage for use as a school site (Pine Rock Twp. Dist. 2) The cost of the lot on the Chicago and Iowa Trail was fifteen dollars.

294 (From Maps See "99" of Maps pages 108 and 110)
23440 Tr'd. W. 265' x 190' 1/2' 1863
Conrad Eychaner wife - To - Trustees of Schools. 323. R. 11

This Indenture, Made this Eighth day of December
in the year of our Lord One thousand Eight hundred and fifty six
Between
Conrad Eychaner and Betta Eychaner his wife

of the first part and School Trustees for the use of District 12 Town of Tremont, County
of Pine, Range Eleven of the State of Wis.

WITNESSETH, That the said party of the first part, for and in consideration of the sum of Five
Dollars

by the said party of the second part, the receipt whereof is hereby acknowledged, have granted, conveyed and sold, and
by these presents do grant, convey and sell unto the said party of the second part, their heirs, assigns and assigns forever,
all the following described Lot of land situated in the County of Pine State of Wisconsin
to wit: a part of the lot four of the 1/2 6th quarter of Section five
Town, Range, Eleven, County, Pine, State of the first, range, and Sixty townships of the 1st range
of the 8th East Range of said first part and on the West line of the East Range of said first part, and
beginning from the N. W. corner, two chains and twenty three links (2323) thence South, two chains and twenty three links
(2233) thence East, two chains and twenty three links (2233) thence South, two chains and twenty three links
(2233) thence East, two chains and twenty three links (2233) thence South, two chains and twenty three links
of the 1/2 6th quarter of Section five

Together with all and singular the fixtures and appurtenances thereto in anywise appertaining,
and the services and tenements, tenements and hereditaments, rents, issues and profits thereon; and all the water, rights,
with, without, above and beneath the surface of the said part of the first part, which in law or equity, of, in and to
the above described premises, with the fixtures and appurtenances; Do Give and to hold unto said parties
above designated and described, with the appurtenances, unto the said party of the second part, their heirs, assigns
forever.

And that said Conrad Eychaner, Betta Eychaner, party of the first part,
for them, their heirs, assigns and assigns forever, do warrant, grant, convey and give, so and with the said party of
the second part, that they, their heirs, assigns and assigns forever, shall at the time of the maturity and delivery of these presents, they and
well seized of the premises above conveyed, as of a good and lawful title, defend and defendable unto said parties in the
law, in fee simple, and have good right, full power and lawful authority to grant, convey, sell and convey the same in
maner and form aforesaid; and that the same are free and clear from all mortgages and other grants, charges, debts,
taxes, taxes, assessments and incumbrances, if what kind of matter soever; and the above designated premises in the
quiet and peaceable possession of the said party of the second part, their heirs, assigns and assigns forever, without
person or persons lawfully claiming or to claim the whole or any part thereof, the said party of the first part, shall
and will warrant and defend.

In Witness Whereof, the said party of the first part, have set their hand and seal the
day and year first above written.

SIGNED, SEALED AND DELIVERED,
IN PRESENCE OF

Wm. Taylor - J. H. Anderson
STATE OF ILLINOIS) ss. Wm. Taylor, J. H. Anderson, Justices of the Peace,
County of Pine, State of Wisconsin, do hereby certify that the foregoing is a true and correct copy of the original of the
above described instrument, as the same was presented to me for recording, and that the same has been duly recorded in my
office, in accordance with the provisions of the laws of the State of Wisconsin, relating to the recording of instruments.



Witness my hand and seal this Eight day of December 1856.
Wm. Taylor - J. H. Anderson

(Cont.) Most of the one-teacher schools came into being in Ogle county in the late 1850's and early 1860's. In the overwhelming percentage of the instances of founding a school, the land was purchased by the Board of Trustees from the farmer whose land lay favorable for starting a school. This piece of land was usually in the corner of the farmer's property. When purchased the deed was made to the Board of Trustees. In the remainder of the cases, the land was simply donated by a farmer for use as a school lot. When it came time to sell the property (in the 1940's to 1960's), and if there was no deed, the land was returned to the farm the land came from originally. However, the school itself and the equipment that went with the operation of the school, would be sold at public auction and the money derived therefrom would go into the School Fund.

Recorded deeds of the land show that the school lot would generally be about 7 to 9 rods in length, on all four sides. After attending a school for 8 years, most walkers knew the school lot "like the back of their hand." They knew where each rock was, know where the areas were that would tend to slow one down in a foot race, and know where the spots were that would get muddy, after a downpour.

One-room schools were the Sentinels of the Prairie in Ogle county from 1836 to 1964 (when GREEN PRAIRIE closed). Before, and since then, they have quietly surrendered their posts to "modern educational facilities in town." However, a few "old veterans" still manage to keep themselves erect in the forlorn hope that the ebullient walkers would come back some day. These old buildings can still remember the pupils as they came to school in the morning, swinging their half-gallon syrup-can lunch pails back and forth through the air, shouting and laughing as they moved inexorably toward the school's front door. And they also remember how quiet it would soon get when Teacher said; "The class will come to order! Eighth grade, take out your lessons, and come up to the bench, please."

Of the approximate 170 rural schools in Ogle county, about half have been razed or removed from their original sites, since closing time. About 10 schools are still standing in various stages of ruin. The remainder of the 170 have been integrated, or converted into a family residence.

In the case of those buildings converted to homes, some are readily recognizable as Sentinels of the Praire, and have maintained their charm and identity while others have been skillfully integrated and are not easily detected as having once been an institution of learning, or as a place to hold a spelling bee.

Early schools were built with logs, but the material soon changed to wooden boards as siding, and, as the children who attended them will attest; they were poorly insulated. Approximately 95 percent of the schools were built with lumber while the remainder were of brick or stone-construction.

To generalize; most schools had a brick chimney at the back; most had the exit/s in front; some had a porch; some had a cement "stoop"; most had a combination cloak-lunch pail room; all had a girl's and a boy's toilet at extreme ends, in back, of the lot; most had an attached shed for storage of fuel, such as cobs, wood, and coal; most schools had a large bell located either on the roof in a belfry or in the peak; and when the automobile came along, some schools had a garage to house the teacher's car during the school day.

With the advent of the car, it allowed the teacher to live away from the school's community, and workplace. Before that time, the teacher boarded at the homes of local farm families, or, quite often, at the home of a director and his family.

For a look at a school of post-Civil War days, we can, thanks to W.W. Bridgeland, peruse his reminiscences which can be found in manuscript form at (Cont.)

Due to some alleged disparaging remarks that were made previously, a father in District 117 found it necessary to accentuate his hurt feelings (at a meeting in the school) by firing a hand-gun at his foe. The fire was zealously returned, resulting in a bullet lodging in the back blackboard. A vigorous effort was made by all that night to "get small", and shouts of "Shoot high!" were heard in this early 20th-century incident.

D E E D BOOK 242 PAGE 306

THIS INDENTURE WITNESSETH, That the grantor, COUNTY BOARD OF SCHOOL TRUSTEES, of Ogle County, Illinois, a body politic and corporate existing under and by virtue of the laws of the State of Illinois, for and in consideration of the sum of

Two Thousand One Hundred Dollars, conveys, quit-claims and releases unto Orlie A. Eads and Louise Eads, husband and wife, as joint tenants and not as tenants in common.

of LaSalle in the County of LaSalle and State of Illinois, the following described real estate, to-wit:

Part of the South West 1/4 of the South East 1/4 of Section 5, in Township 22 North, Range 11 East of the 4th P.M., in Ogle County, Illinois, bounded and described as follows: Beginning at the South West corner of the South East 1/4 of said Section; thence running East 8 rods on the South line of said Section 5, thence North 8 rods parallel with the West line of the South East 1/4 of said Section 5, thence West 8 rods parallel with the South line of said Section 5 to the West line of the South East 1/4 of said Section 5, and thence South 8 rods on the West line of the South East 1/4 of said Section 5 to the place of beginning.

IN WITNESS WHEREOF, said grantor, which does not have a corporate seal, has caused its name to be signed to these presents by its President and attested by its Secretary, this 26th day of November, 1957.

COUNTY BOARD OF SCHOOL TRUSTEES of Ogle County, Illinois
By Harold D. Rose
President

Attest:
W. H. Pickering
Secretary

STATE OF ILLINOIS)
COUNTY OF OGLE) SS



I, the undersigned, a Notary Public in and for said County, in the State aforesaid, DO HEREBY CERTIFY that Harold D. Rose, personally known to me to be the President of the COUNTY BOARD OF SCHOOL TRUSTEES of Ogle County, Illinois, a body politic and corporate existing under and by virtue of the laws of the State of Illinois, and W. H. Pickering, personally known to me to be Secretary of said Board, and personally known to me to be the same persons whose names are subscribed to the foregoing instrument; appeared before me this day in person and severally acknowledged that as such President and Secretary of said Board, they signed and delivered the said instrument as President and Secretary of said Board; that said Board does not have a corporate seal; as their free and voluntary act, and as the free and voluntary act and deed of said Board, for the uses and purposes therein set forth.

GIVEN under my hand and Notarial seal, this 26th day of Nov., 1957.

Helen A. Calkins
Notary Public



DOCUMENT NO. 325615

Filed for record in the Recorder's Office of Ogle County, Illinois, December 2 A.D. 1957, at 10:35 o'clock a. M.

When each rural school closed, the Board of Trustees sold the property. Above is the PRAIRIE STAR deed given to buyers when it was sold in 1957.

(Cont.) the Ogle County Historical Society's files in Oregon, Illinois. This thoughtful, and keen observer attended FAIRVIEW school in Byron township.

He tells us in his remembrances (which are in manuscript form) how school was first held in the district in the home of a farmer. But soon, William Wright offered a lot to the district for use as a school site, in the northwest corner of his farm. (See the HISTORICAL MAP OF OGLE COUNTY 1864.)

That offer was accepted, Bridgeland wrote, "and the building was erected in 1861, a modest frame structure, 18x25 feet."

"For viewing the interior of the school, through the mind's eye, we enter through a door in the center of the north end (front), into an entry extending the width of the building, and from this to the school room, through two doors, one to the right for the boys, and one to the left for the girls."

Bridgeland also said; "In entering we see four rows of desks, the outer rows on either side (by the wall) extending almost the entire length of the room and facing the north, while the two center rows were about half-way across, leaving a space for the stove and recitation benches. The teacher's desk was at the north end of the room, on a raised platform between the two entrance doors. This desk faced the pupils, and commanded a good view of everything that was going on."

"All the seats and desks were of pine boards. The desks having covers that raised on hinges to receive the books, and other contents. You can imagine the continual clatter of lids in the exchange of books, which in itself was enough to try the nerves of any teacher. The seats to the desks were stationary boards and were intended to seat two pupils. The one sitting at the farthest end of the seat by the wall had to sit down and slide the length of the seat to get into place. Some of the seats were lower than others (for the smaller children) yet they were too high for many of them to rest their feet upon the floor, and they had to sit and dangle them in the air."

Mr. Bridgeland went on to say; "Another article of note was the stove. It was a long cast-iron square-cornered box with the sides highly decorated with figures and vines, and it would almost take in a cord of stick wood, but for convenience, the cord sticks were cut in halves. On cold mornings, it was filled to the top and glowed red with furnace heat."

"For the year 1911, fifty years having gone by, the district again felt the need of a new and up-to-date school building, so a special meeting was called by the directors to vote for it, or against it. Due to the vote being in the affirmative, the directors went to see several new school buildings in the area and, in time, the plan of one of those schools was chosen, with a few alterations. The contract was let to C.S. Thomas of Pecatonica for \$1250. At an auction, the old school building was sold to the highest bidder; James Moore, for \$11."

"The new building was built on the same site as the old one. The school was 26x30 feet, the entrance was 8x10 feet, and the cloak rooms were 6x12 feet. New single desks were put in and the room was furnished with slate, blackboards, and other up-to-date equipment."

"When the school started, originally, there was a large attendance and for many years continued so. I think the cause of this was for several reasons: 1st. most of the people had large families: 2nd. many of the older pupils had to work at home during the summer and could attend only during the winter. So they continued going until they were 20 years of age, and some of them older. Another reason for the large attendance was there were many girls and boys who came into the district working for their board in some family, and attending school. Some winter terms there were over 50 pupils enrolled, consequently some of the smaller children had to sit three in a seat, and some had to sit on the recitation (Cont.)

"SLAGLE school, taught by Miss Ella Grant, celebrated the occupancy of their new school building in an appropriate manner; a program. The building is modern in every respect; cement basement, furnace, and two cloak rooms. It cost the district \$1800." OGLE COUNTY REPUBLICAN 1915

TEACHER'S CONTRACT

Sample
Teacher's
Contract

It is Hereby Contracted and Agreed by and between

the undersigned School Directors of District No. 109, County of Ogle
and State of Illinois, and Gladys Hersch
a legally qualified Teacher, that the said Gladys Hersch shall teach the
School in said District for the term of 1933 - 34 for the sum of
50.00 Dollars per calendar month, teaching at least

hours each day, commencing on the 1st day of Sept 1933.
Provided, that nothing herein contained shall require said Gladys Hersch

to teach upon the days excepted from the school month by the statute. And the said
Gladys Hersch agrees faithfully to teach the said School according
to the best of her ability, and to keep a Register of the Daily Attendance of each Pupil belonging
to the School, and make such report of the School as is or may be required by law, or by the State
Department of Public Instruction, and to observe and enforce all rules and regulations established by
proper authority for the government and management of said School.

And It Is Further Agreed By and Between the Parties Hereto, That the said Gladys
Hersch shall use her best endeavors
to preserve in good condition the School House and Premises connected with it; also the Apparatus
and Furniture thereto belonging, and also all Books and Records provided by the School Board for the use
said School, and to deliver the same to the Clerk of said District, or his successor in office, at the close
or the said term of School, in as good condition as when received, natural wear and tear excepted.

And the undersigned, as Directors of said School District, hereby agree in behalf of said district to
keep the School House and premises connected with it in good repair, to provide necessary fuel for the
use of said School during the said term, and that for the services performed as above described, then
and thereupon the undersigned Directors of said District agree to certify to the Schedule as the law
directs, in favor of the said Gladys Hersch
that the sum of \$50 and 00/100 Dollars
is due her, the same being the amount of wages agreed upon by the parties hereto.

Provided, That in case the said Gladys Hersch shall be dismissed
from the said School by the said Directors for gross immorality, incompetency, or any violation of this
Contract, or shall have her Certificate annulled or revoked by the County or State Superintendent,
G. Hersch shall not be entitled to receive any compensation from and after such annulment
or dismissal.

IN WITNESS WHEREOF we have hereunto subscribed our hands this 10th day
of April 1933

Harry Youm
C. C. Hardesty
Fred Kurth
Gladys Hersch
School Directors
Teacher.

REMARKS.—This contract should be made out in duplicate, and one copy given to the teacher. No Board should allow a teacher to commence school until a written contract is properly signed by both parties.
WRITTEN CONTRACTS.—School boards and teachers should make written contracts. All of the points about which differences would be likely to arise, such as the amount of salary, length of time, etc., should be plainly set forth in such agreements. The language of the contract must express the exact intention of the parties; for while the rule of the law is to give effect to the intention, yet if the language is unequivocal it will govern, although it fails to express the real intention of the parties.—Benjamin vs. McConnell, 4 Ill. (Gillman), 136. Hutman's Decisions, page 158.
The school month shall be the same as the calendar month, but a teacher shall not be required to teach on Saturdays or legal school holidays, which are the first day of January, the fourth day of July, the 25th day of December, and any day appointed by the President or Governor as a day of fast or thanksgiving, and no deduction shall be made from the time or compensation of a teacher on account of such days. Sec. 188, School Law.

The Great Depression brought Miss Gladys Hersch's monthly pay down to \$50 per month for teaching Dist. 109. In her first year of teaching, 1928, she was paid \$85 a month. These were hard times for the parents, too, and the walkers always seemed to need new shoes.

"A noteworthy undertaking of the Illinois superintendent of schools is the annual teachers institute. Pioneer legislation of 1869 provided that the school directors were to allow school teachers to attend the institute in their county without the loss of time or pay. Twenty years later, the superintendent of schools was required to hold the institute annually. A fund was set up for this purpose which has continued to be made up of the fees received from applicants for teachers' certificates and from teachers' registration. Money from the fund is paid out only on the order of the superintendent to defray the expenses of the annual institute." ILLINOIS HISTORICAL RECORDS SURVEY PROJECT 1940

(Cont.) bench and had no desk at all."

Bridgeland, in his reminiscences, mentions the teacher quite often, talking about the discipline various teachers employed, and the stress the teacher was under in carrying out the job he or she was hired to do. He also mentioned a teacher, Maggie Wray, who was paid three dollars a week, and how she had to pay seven dollars for a hat that same year.

The salaries of the one-room teachers, from the beginning, started low and continued that way until the schools closed. Over in District 117, by 1899, Anna Malarkey was paid \$25 per month. Ten years later, Irma Grow was able to draw \$35 a month. In 1929, Elsie Cirksena's salary had risen to \$114 per month.

However, in a community, if one were a teacher, he or she, (with rare exceptions) had the automatic respect of the public. That public may not have wanted their taxes increased to pay higher salaries for the teachers, but they understood the perils of the job, due to the fact the "public" had attended a rural school and knew how arduous, and thankless the teaching job could be.

Most of the children enjoyed their studies, especially if the teacher was enthusiastic in his or her approach to teaching, while trying to present the dry facts of "lernin" with some imagination. As a general rule, the country teachers "did their best" and that was all the public asked.

We have been here all day and, so far, have not had to take one test, or had to recite the Gettysburg Address, or asked to "write up to a thousand" on the blackboard. But we have talked about townships, sections, teachers, boards of directors, and we have "talked up" the walkers, and how they had to swim icy streams, and fight off wild animals.

Having saved this moment for the last, let us at this time, raise our glasses of hot chocolate in salute to the one-room country school; the Sentinel of the Prairie, our home away from home!!

SCHOOL-SITE KEY

We have listed the districts by name and number. School-names in parenthesis following a school-name, indicates the school was also known, at some time, by that name. Abbreviations were used, e.g.; "Dist." for District; "Sec." for section; "S" for the direction south; "int." for road intersection; "T-int." for T-intersection; ".2 Mi." indicates two-tenths mile; and "LR" which indicates the last year, say LR 1950, of available records (at the county superintendent's office) for that school, and usually means the last year that the school operated. Those schools that do not have an LR year have no surviving records in the aforementioned office, according to the superintendent's statement. We have included pictures of the school-sites if the school building has been razed, moved, or burned down since the school closed. We have not included a site-picture if the school building is still on the site and has been re-modeled into a home, or become part of an on-site residence. We are reasonably certain that the sites not shown are now (1990) residence-incorporated buildings. In taking the pictures, we have tried to include a "landmark" in the background, such as a line-fence, tree, silo, or even a roadway, as an aid to location. Also, concerning the mileage figures, these are only automobile odometer readings, and are not exact measurements.



MT. PLEASANT school Dist. 107 In 1864, the school property was in the SE corner of the T.R. Meredith farm. The school had the usual three side windows. It had a wooden stoop and a wooden sidewalk. Today, it is a nice home.

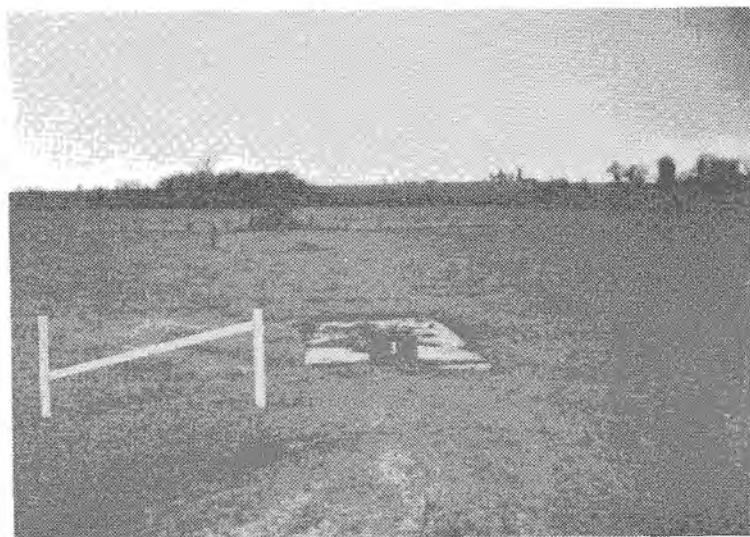


LIMERICK school Dist. 117 This school had a side door as well as a front door. It had a cement stoop, two cloak rooms, and a bell in the peak. Photo is ca. 1932.

OGLE COUNTY SCHOOL DISTRICTS OF THE PAST



"Site Of First Public School House In Ogle County 1836" LaFayette Twp. Sec. 4 .75 mi. E-NE of Prairie Star School & 200 yards SW of Grove Creek. Looking west. Bldg. gone.



EAGLE POINT Eagle Point Twp. Dist.3 Sec. 10 W side of Brookville Rd. & .2 mi. S of Eagle Point Rd. Was two-story brick. Cement slab there. Looking west. LR 1956.



BARCLAY Eagle Point Twp. Dist. 1 Sec. 27 NW corner of Wilson Mill & Barclay Rds. int. Looking north. Burned down. LR 1957.

DONALDSON Eagle Point Twp. Dist. 2 Sec. 12 E side of Donaldson Rd. & .3 mi. S of Eagle Point Rd. During the Civil War, two schools (one public) operated in the district due to a "southern" faction that wanted a school which would reflect their own views of the war, society, and personal values. LR 1956.

=====
The dedication ceremony for the "first public school" marker (see above) was held September 17, 1909.
=====



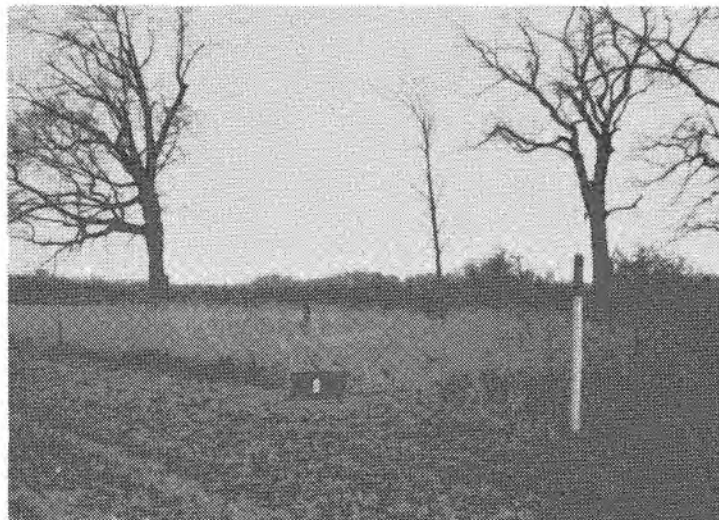
BROOKVILLE Brookville Twp. Dist. 5 Sec. 27 Via Brookville Rd. .2 mi. S of IL 52 & one-half block E of Brookville Rd., east side of street. Was two-story brick. Sidewalk there. Looking east. LR 1957.

BURR OAK Brookville Twp. Dist. 6 Sec. 26 West side of Mount Vernon Rd. & .5 mi. south of IL 64. LR 1952

=====
Well into this century, the only educational-requirements needed to teach in a one-room "country school" was an eighth-grade education, but the job also needed someone with a lot of patience and dedication.
=====



CENTER HILL Brookville Twp. Dist. 7
Sec. 14 West side of Mt. Vernon Rd.
& .25 mi. S of Lanark Rd. Looking
east. Last record 1945.

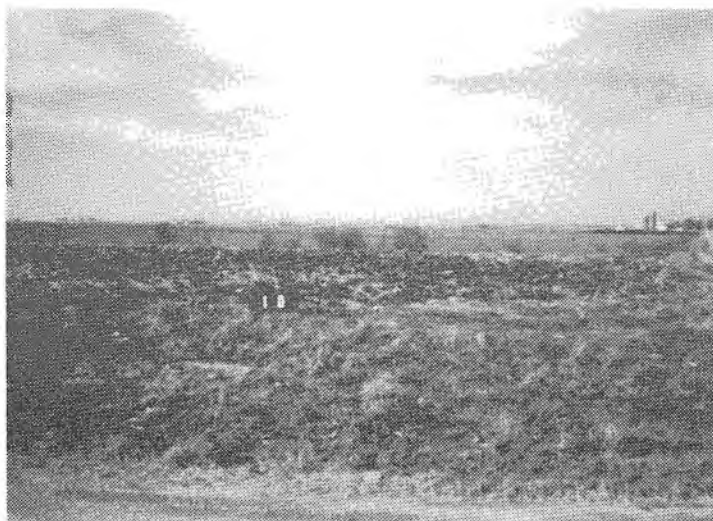


CHAMBERS GROVE Brookville Twp.
Dist. 8 Sec. 10 South side of
Lanark Rd. & .25 mi. W of Brookville
Rd. Pump there. View southeast.



MT. VERNON Brookville Twp. Dist. 9

Sec. 1 East side of Mt. Vernon Rd.
& .2 mi. N of West Grove Rd. Bldg.
there. View east. LR 1948

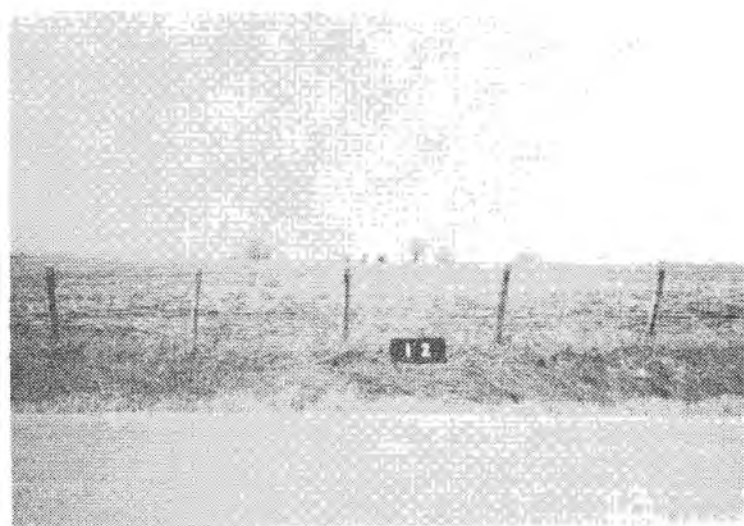


PLEASANT HILL Forreston Twp. Dist.
10 Sec. 26 NW corner of int. of
White Oak & Mt. Vernon Rds. Looking
NW. LR 1951.



GRAVEL HILL Forreston Twp. Dist. 11
Sec. 13 East side of Mt. Vernon Rd. &
.1 mi. north of IL 72. Looking east.
LR 1960

Some teachers had distinct rituals to perform for dismissing the pupils at lunch-time or for recess. Some began the proceedings by announcing; "Prepare to put your books away for recess (or lunch.)" Then followed a fast shuffling of books and papers. After that flurry of activity, the teacher proclaimed, "Rise!" Then, with appropriate pauses, "Stand!", and "Pass" were vocalized. The only ritual she wanted you to perform, on return, was to be sure and wipe your feet.



PRAIRIE DELL Forreston Twp. Dist. 12
Sec. 1 N side of Prairie Dell Rd. &
100 yards E of Mt. Vernon Rd. View
north. LR 1947.



UNION Forreston Twp. Dist. 13
Sec. 3 NE corner of int. of Prairie
Dell & Brookville Rds. Cement ruins
there. Looking northeast.

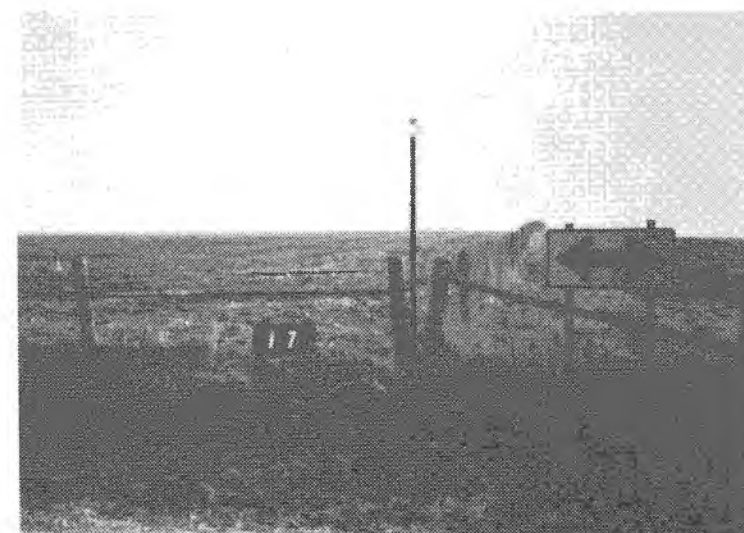
UNITY Woosung Twp. Dist. 14 Sec. 8
SW corner of Sterling & Unity Rds.
intersection LR 1957.

=====
"(Around here), the first school
remembered was about two miles north-
west of Leaf River. It was taught
by Sarah Carpenter in 1843. Classes
were held in the kitchen of one of
the pioneers. In 1861, the first
school in the township was erected
near there. First called OAK RIDGE,
it was subsequently called MUD CREEK
and was located on Mt. Morris road,
north of Route 72." (From the Leaf
River, IL centennial book, 1982)
=====



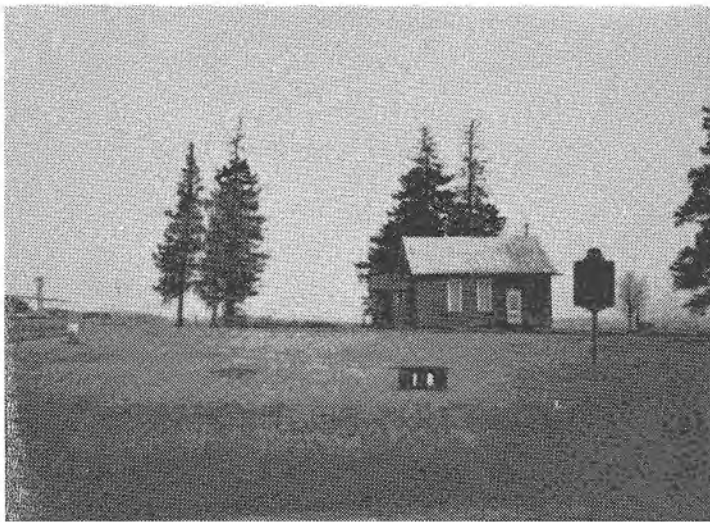
LAGRANGE Woosung Twp. Dist. 15 Sec.
36 NW corner of int. of Edgewood &
China Rds. Looking NW Bldgs. gone.
Last record 1948.

MOORE Woosung Twp. Dist. 16 Sec. 34
W side of Peek Home Rd. & 100 yards N
of Edgewood Rd. LR 1957.

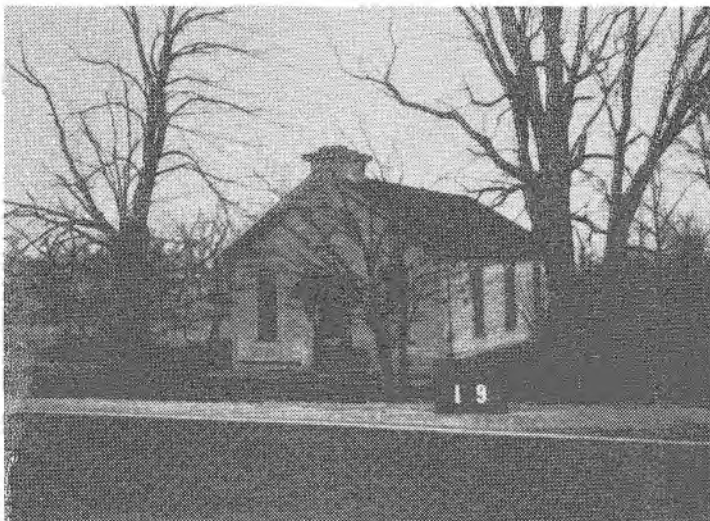


EVERGREEN (Kingery) Buffalo Twp.
Dist. 17 Sec. 26 E side of Evergreen
Rd. at T-intersection with Spruce Rd.
View east.

=====
"(in the 19th century) the school
buildings played a big part in the life
of the community. They were used for
church services, community affairs,
stage coach stops, and post offices,
as well as for school purposes. In
early days, there were no individual
grades or individual teachers. There
was no graduation ceremony. Teachers
started their jobs at age 17." (From
the Holcomb, IL cent. booklet, 1976)
=====



HENRY Buffalo Twp. Dist. 18 Sec. 21
NE corner of int. of IL 26 & 52 &
Henry Rd. View north. A Grange
Hall now. LR 1957.



DOTY Buffalo Twp. Dist. 19 Sec. 19
E side of Freeport Rd. & 100 yards
S of Milledgeville Rd. Bldg. there.
View east. LR 1958



JUDSON Buffalo Twp. Dist. 20 Sec.

14 N side of Judson Rd. & .7 mi. W
of Evergreen Rd. Looking north.



COTTAGE HILL Buffalo Twp. Dist. 21
Sec. 14 S side of Pines Rd. & 100
yards east of Oregon Trail Rd. View
SW Pump still there. LR 1951.

POLO Buffalo Twp. Dist. 22 Sec.
16 NW corner of Franklin & Webster
Sts. int. Early two-story brick.

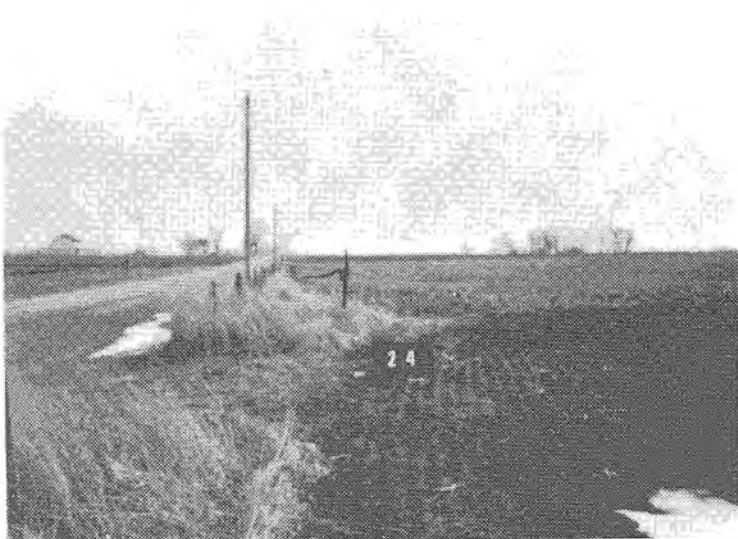


BUFFALO GROVE Buffalo Twp. Dist.
23 Sec. 17 E side of Galena Trail
& .1 mi. S of Milledgeville Rd. Polo
historian Henry Boss claimed this area
had first Ogle school. Abe Lincoln
was in area during the Black Hawk War,
and prior to the Civil War was a
guest of Zenas Applington, a pioneer
of the Polo area. LR 1957

=====

Teacher: "Leonard, I want you to go to
the blackboard, now, and spell Mister
Aplington's name with one p." Leonard;
"Gee, Miss Long, I should have known
better."

=====



GRADATUM Buffalo Twp. Dist. 24
Sec. 12 S side of Fairmount Rd. &
.1 mi. east of Evergreen Rd. View
E Pump there. LR 1957.



EUREKA Lincoln Twp. Dist. 28 Sec.
36 E side of Evergreen Rd. & .5 mi.
S of IL 64. Burned recently. View
east. LR 1952.



BRAND Buffalo Twp. Dist. 25 Sec. 4
N side of Fairmount Rd. & .1 mi. NE
of IL 26 & 52. Looking north. Bldg.
there. LR 1957

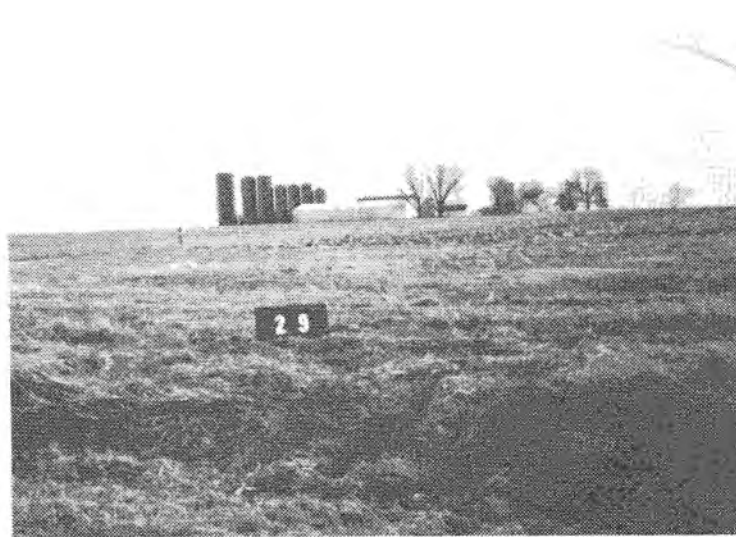
BRICK Buffalo Twp. Dist. 26 Sec. 7
S side of Robin Rd. & .1 mi. W of
Galena Trail Rd. Closed about 1957.

CANADA SETTLEMENT Buffalo Twp.
Dist. 27 Sec. 6 SW corner of
Canada Rd. & Freeport Rds. int.
LR 1957.

=====

FLAGG CENTER school was situated
just south of the CB&Q rail line.
If a pupil missed a question in
class, they could always say they
didn't hear it discussed in class
on account of the passing train,
and its effervescent steam whistle.

=====



EXCELSIOR Lincoln Twp. Dist. 29
Sec. 33 SW corner of T-int. of Goose
Hollow & Union Rds. View SE LR 1956

ELDORADO Lincoln Twp. Dist. 30 Sec.
29 NE corner of Goose Hollow & Summ-
er Hill Rds. int. LR 1957

WEST BRANCH Lincoln Twp. Dist. 31
Sec. 14 E side of West Branch Rd. &
.2 mi. S of Apple Rd. LR 1957

=====

The task of locating the sites of one-
room schools would have been much more
difficult if the roads were un-named
on maps, or plat books. Earlier, if
the road led to a village, the road
was called, for instance, the Chana
Road, but if it were a "feeder" road,
the road was usually given the name
of a long-time resident of the road.
But woe betide, if you were a stranger.

=====



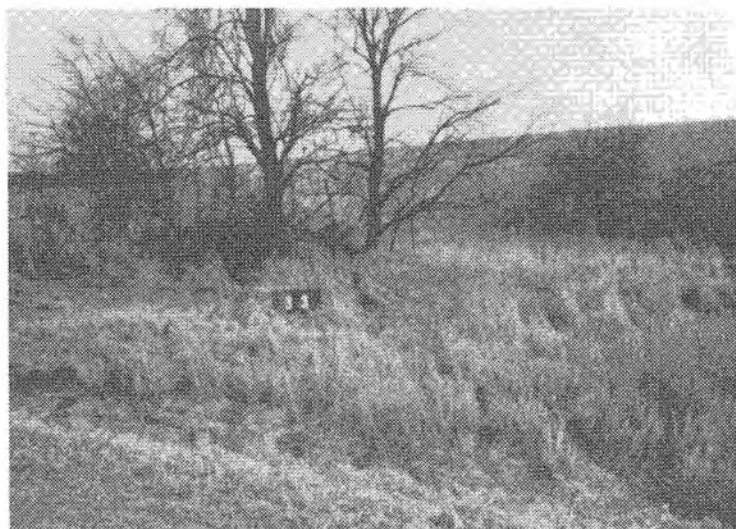
SMITH school Dist. 163 In 1864, the school stood in the SE corner of the E. Colby farm. The school had a wooden porch, and had unusually high side windows. Photo ca. 1952.



SILICA school Dist. 59 This building does not appear to conform to the usual design. It has a pillared-porch and has the belfry on the side of the roof. Pictured ca. 1915, the immediate area has changed dramatically.



HALDANE Lincoln Twp. Dist. 32
Sec. 16 NW corner of T-int. of Union
& Springdale Rds. Bldg. gone.
Looking N LR 1957.



SPRINGVALE Lincoln Twp. Dist. 33
Sec. 20 SE corner of Springdale &
Summer Hill Rds. intersection.
Looking SE LR 1949.



WEST GROVE Lincoln Twp. Dist. 34

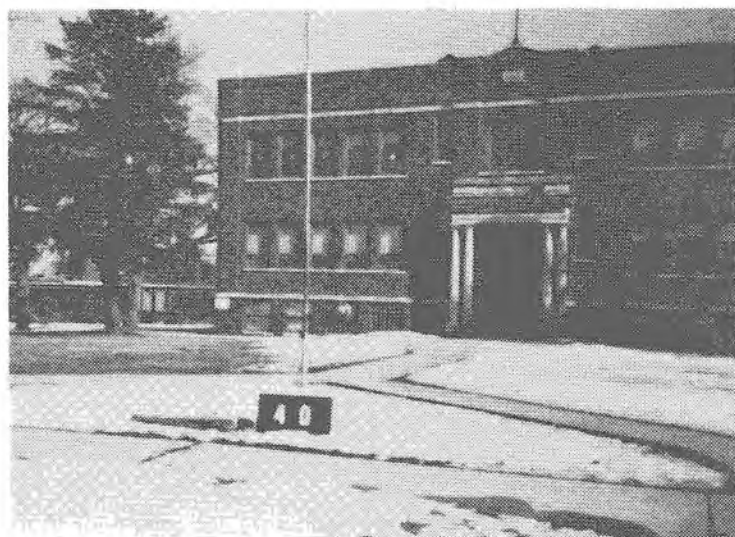
Sec. 1 N side of West Grove Rd. & .1
mi. E of Columbine Rd. Looking NW.

MARR Lincoln Twp. Dist. 37 Sec. 10
S side of West Grove Rd. & .5 mi. E of
Il 26. LR 1960.



SUMMER HILL Lincoln Twp. Dist. 38
Sec. 5 NE corner of West Grove &
Summer Hill int. Looking NW LR 1960

PLEASANT HILL Maryland Twp. Dist. 39
Sec. 35 SW corner of IL 72 & Columbine
Rd. intersection. LR 1958



FORRESTON Forreston Twp. Dist. 40
Sec. 33 E side of 1st Ave. (IL 26)
& 50 ft. E of Birch St. T-inter-
section. Early multi-room is marked
by a stone inscribed "A.D. 1867" The
marker can be seen at left of dist.
number. The school building shown
was built in 1916 and is still in
use.

=====

A ROCKVALE HEIGHTS alumna remembers
she helped, on Halloween eve, to put
a moo-cow in the cyclone cellar there.

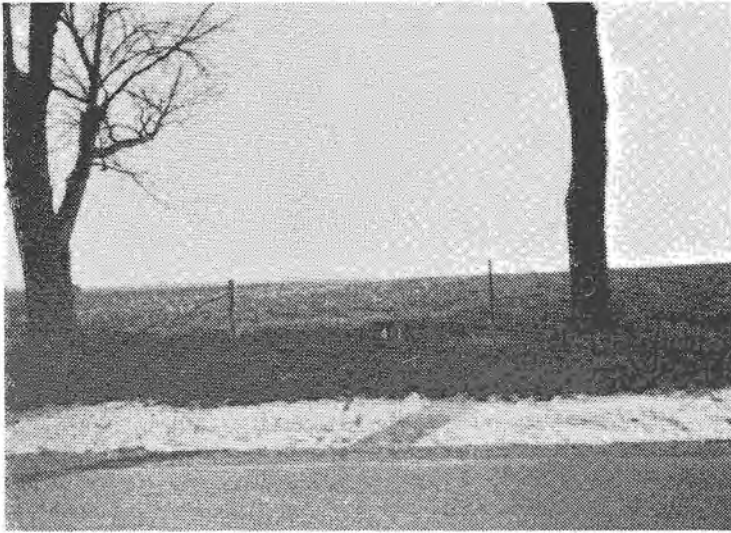
=====



SCOTT school Dist. 157 In 1864, the school was in the SE corner of the J. Prentice farm. Today, there is no sign of a school having stood there. School had two front doors and a cement stoop.



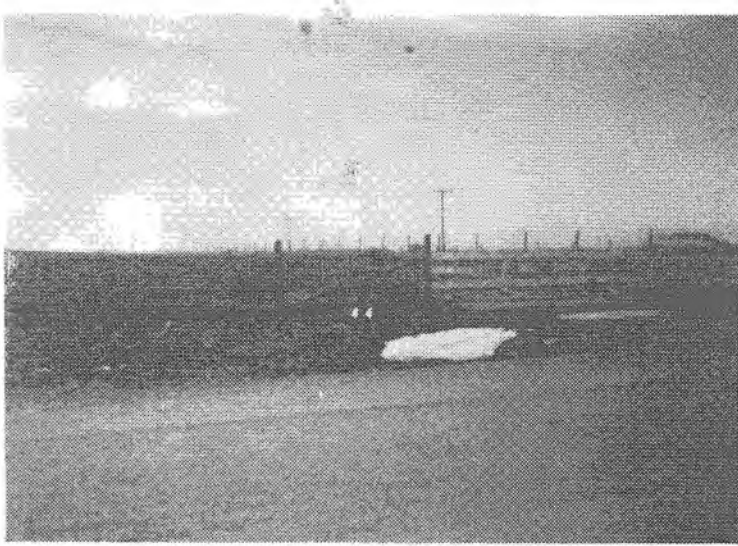
KILLBUCK school Dist. 176 In 1864, the land was a part of the A. Hill farm. This picture was taken in 1919, and the school appears to be of good construction. It stood beside a cemetery.



WHITE OAK Forreston Twp. Dist. 41
Sec. 32 S side of White Oak Rd. &
1 mi. E of Freeport Rd. View S

CYCLONE HEIGHTS Maryland Twp. Dist.
42 Sec. 26 SW corner of White
Eagle & Columbine Rds. int. LR 1960

GREEN PRAIRIE Maryland Twp. Dist.
43 Sec. 11 N side of Coffman Rd.
& .3 mi. W of Bluff Rd. Last Ogle
county one-room to close- 1964.



MAPLE HILL Forreston Twp. Dist. 44
Sec. 16 SW corner of Coffman &
Hollywood Rds. int. View W. LR 1960

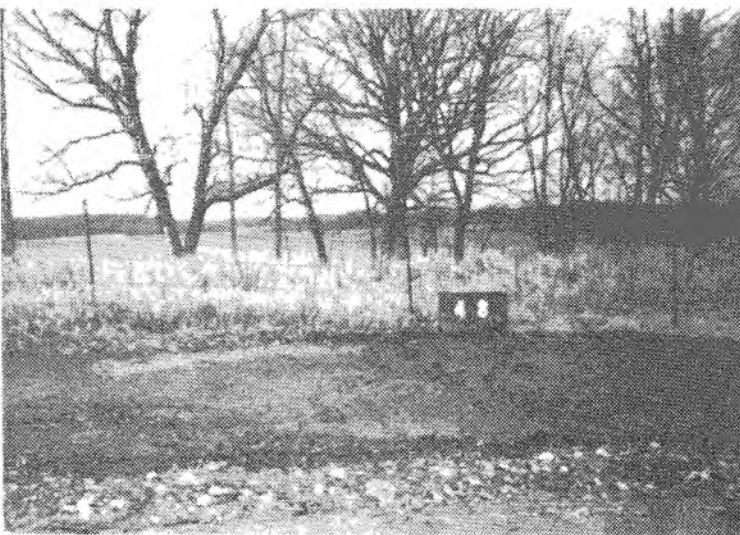
Extremely cold mornings (when the
temerature hovered around the "20
below" mark) were, in a way, wel-
comed, because on those mornings
everyone would be allowed to gather
around the furnace, thereby alter-
ing a fairly monotonous routine.
It gave a feeling of shared exper-
ience. Even the teacher seemed
more vibrant.



GRAVEL PIT Forreston Twp. Dist. 45
Sec. 17 NW corner of Pit & Crane
Grove Rds. T-intersection. Looking
N LR 1951

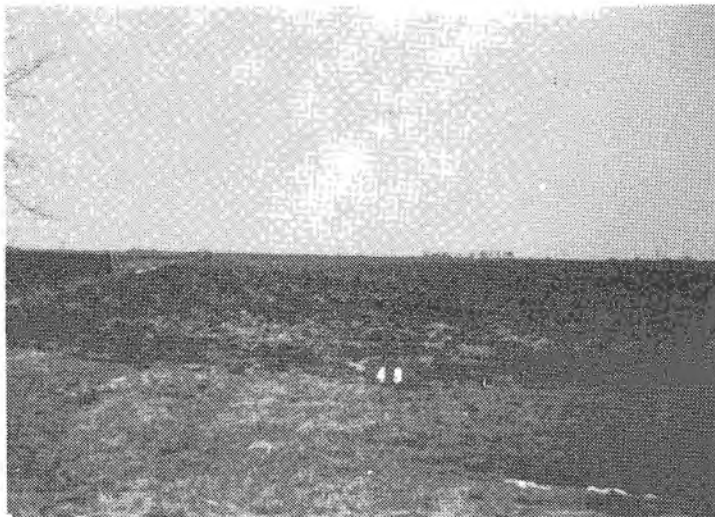
BAILEYVILLE Forreston Twp. Dist. 46
Sec. 5 E side of Main St. & 50 yards
N of Washington St. Two-story brick
built in 1855.

GRAND DETOUR Grand Detour Twp.
Dist. 47 Sec. 13 In N half of block
bounded by Ogle, Green, Broad & Main
Sts. Multi-room brick.

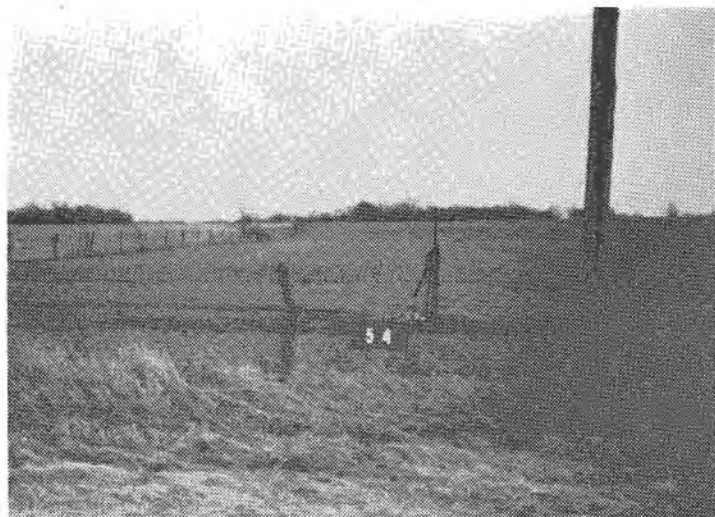


HICKORY RIDGE Grand Detour Twp.
Dist. 48 Sec. 3 (Hickory Ridge was
also known as Center, & Ira Adams
school) W side of Hickory Rd. & .3
mi. N of Edgewood Rd. Looking W

Reading was a big part of the edu-
cation process. Much of the early
reading material was about morality
and/or the frailties of man or beast.
For example, the story of "The Dog
And His Shadow" had to do with greed.



FAIRVIEW Grand Detour Twp. Dist. 49
Sec. 6 W side of Lowell Park Rd. &
.5 mi. S of Edgewood Rd. View W



CENTER Pine Creek Twp. Dist. 54
Sec. 21 S side of Spring Rd. & .7
mi. E of Anterier Rd. Pump there.
Looking south.



OAK RIDGE Pine Creek Twp. Dist. 50
Sec. 36 W side of Ridge Rd. & .2
mi. N of Penn Corner Rd. Building
there. View N LR 1957

ANTERIOR Pine Creek Twp. Dist. 51
Sec. 28 N side of Penn Corner Rd. &
.2 mi. E of Anterier Rd.

HIGHLAND Pine Creek Twp. Dist. 52
Sec. 30 W side of Lowell Park Rd.
& .2 mi. N of Penn Corner Rd.
LR 1956

HARMONY HILL Pine Creek Twp. Dist.
53 Sec. 13 E side of Ridge Rd. &
.5 mi. S of Pines Rd. LR 1953

=====
"The year before (1921) four schools
around Kings closed and consolidated
with the Kings school. Bill and
Ralph Hayes bought the buildings
and built Kings' first electric
plant." Armour Van Briesen 1990
=====

COLUMBIAN Pine Creek Twp. Dist. 55
Sec. 15 SW corner of Pines & Columb-
ian Rds. int. (Named for Columbian
Exposition) LR 1957.



LOUGHRIDGE Pine Creek Twp. Dist.
56 Sec. 7 NW corner of Pines &
Lowell Park Rds. int. Appears to be
best preserved wooden one-room in Co.
View NW LR 1957.

HILLSDALE Pine Creek Twp. Dist. 57
Sec. 1 N side of Oregon Trail & .2
mi. W of Ridge Rd. LR 1944

PINE CREEK Pine Creek Twp. Dist. 58
Sec. 4 N side of Oregon Trail & .3
mi. W of Columbian Rd. LR 1948

=====
"But all these things (log schools)
are changed now. A log school-house
in Illinois is a rarity." Kett's
HISTORY OF OGLE COUNTY 1878
=====



NAME UNKNOWN Pine Creek Twp.
Dist. 59 Sec. 5 NE corner of T-int.
of Lowell Park & Oregon Trail Rds.
Looking N (Number shown was for
photo purposes. See below for
other Dist. 59)



KEEDY (Union) Mt. Morris Twp. Dist.
60 Sec. 36 N side of IL 64 & 100
yards east of Ridge Rd. Looking N
School stood where front home was
built, school moved to background
right.



SILICA Oregon Twp. Dist. 59 Sec.
17 S side of Devil's Backbone Rd. &
two miles NW of IL 2. Looking S.
At some time earlier in the century,
the Pine Creek Twp. Dist. 59 closed.
The vacant number seems to have been
given to the Silica school in Oregon
Twp. The site of the latter is approx-
imately 75 yards S of the road due
to changes in road configuration
caused by silica-works expansion
which entailed considerable earth-
moving and therefore a change in
landscape. LR 1950.

The slate used in blackboards came
mostly from Penn. and Vermont. Early
schools painted a wooden surface
black and used it for a blackboard.



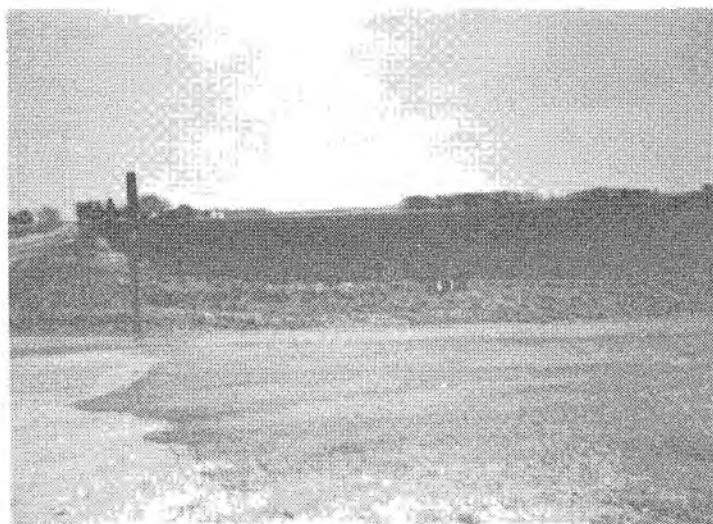
MT. MORRIS Mt. Morris Twp. Dist. 61
Sec. 27 Between Botanic & Seminary
Sts. & S side of Lincoln St. Multi-
room school stood here. View NW.

VICTORY Mt. Morris Twp. Dist. 62
Sec. 32 N side of Lowell Park Rd.
& .1 mi. E of Canada Rd. LR 1946

"School commenced last Monday, and
someone remarked that it is a boy's
big ambition to go back to his school
in the fall, all tanned up. In a
short time, it will be the school
teacher's ambition to tan him up some
more." (ROCHELLE HERALD Aug. 1888)
Corporal punishment in schools was an
accepted practice, but was usually
applied with temperance.



MAPLE GROVE Mt. Morris Twp. Dist.
63 Sec. 30 SW corner of IL 64 &
Maple Grove Rd. intersection.
View SE Last record 1950.



NEW JUNCTION Mt. Morris Twp. Dist.
67 Sec. 9 SE corner of West Grove
& Orchard Rds. T-intersection. Look-
ing east. LR 1943.



STONEBRAKER Mt. Morris Twp. Dist.
64 Sec. 14 N side of Midtown Rd. &
.5 mi. E of Mt. Morris Rd. Looking
northwest. LR 1941.

COON CREEK Mt. Morris Twp. Dist.
65 Sec. 17 N side of Apple Rd. &
.6 mi. W of Adeline Rd. LR 1957

CENTER Mt. Morris Twp. Dist. 66
Sec. 11 N side of West Grove Rd.
& one mile east of Mt. Morris Rd.

=====
"In 1896, the LUDA school was struck
by lightning. The teacher, Jennie
Codney, was knocked unconscious, her
clothing on fire. She would no
doubt have burned to death had it
not been for the presence of mind
of the children to put out the fire."
Doris Glade Vogel, C.G.R.S. 1990
=====



FAIRVIEW Mt. Morris Twp. Dist. 68
Sec. 3 S side of Town Line Rd. & one
and two-tenths mile E of Adeline Rd.
Bldg. gone. View SE Closed ca. 1949.

CEDAR BLUFF Mt. Morris Twp. Dist. 69
Sec. 5 SE corner of Northwest &
Cedar Rds. int. Closed ca. 1949

=====
"For log-school windows, part of a log
was cut out in either side, and maybe
a few panes of 8x10 glass was set in,
or just as likely as not, the aperture
would be covered over with greased
paper. Writing benches were made of
wide planks or, maybe, puncheons, rest-
ing on pins or arms driven into two-
inch augur holes, bored into the logs
beneath the windows. Seats were made
out of thick planks or puncheons."
Kett's HISTORY OF OGLE COUNTY 1878
=====

MUD CREEK (Oak Ridge) Leaf River Twp. Dist. 72 Sec. 26 E side of Mt. Morris Rd. & .5 mi. N of Pond Road. Bldg. gone. Looking north.



LEAF RIVER Leaf River Twp. Dist. 70 Sec. 36 S side of 6th St. between Main & Garfield. Looking W Multi-room stood near numbers.

WHITE EAGLE Maryland Twp. Dist. 73 Sec. 21 W side of White Eagle Rd. & .4 mi. S of Daisy Road. Looking west. Bldg. there (natural limestone). Built 1852. Closed about 1949.



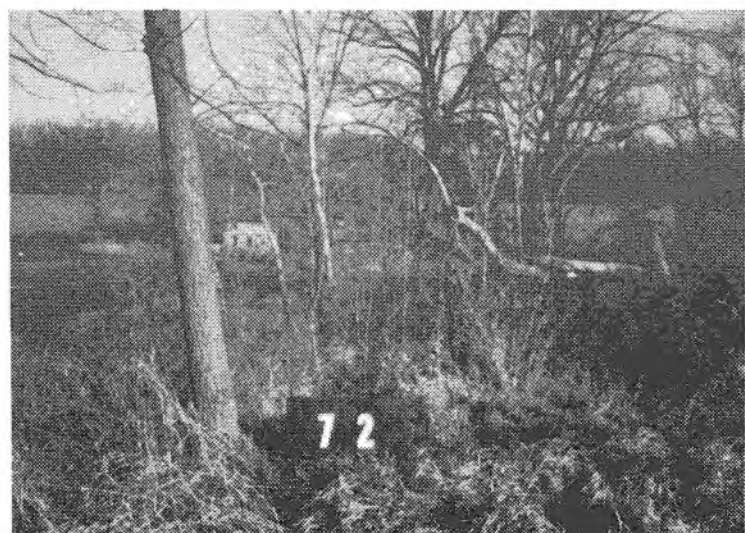
LIGHTSVILLE Leaf River Twp. Dist. 71 Sec. 24 200 yards SW of Leaf River & Lightsville Rds. int. View east. Multi-room.

ADELINE Maryland Twp. Dist. 74 Sec. 29 E side of Adeline Rd. (or NE corner of South & Main Sts. T-int.) View E Multi-room. Vacant. Built 1862. LR 1951.

EGAN Leaf River Twp. Dist. 75 Sec. 12 E side of Leaf River Rd. & .2 mi. S of Egan Rd. LR 1946.

NORTH GROVE Leaf River Twp. Dist. 76 Sec. 10 W side of Mt. Morris Rd. & .5 mi. N of Sumner Rd.

Teacher: "Johnny! Don't do that!!!"

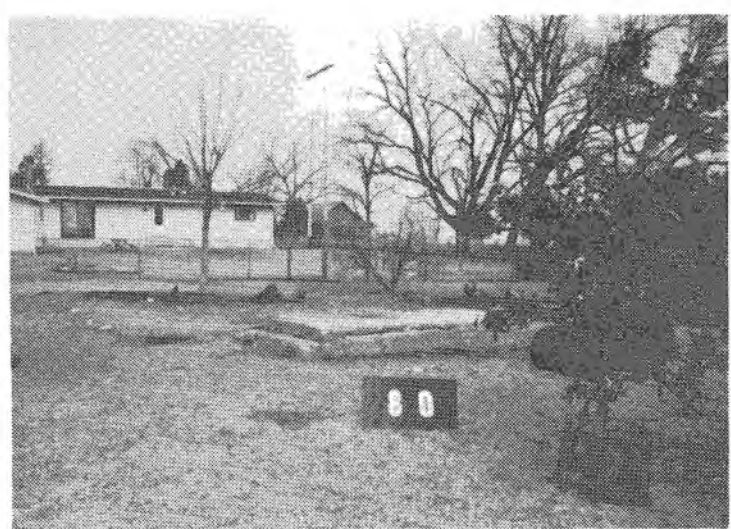


WAGNER Maryland Twp. Dist. 77
Sec. 9 S side of Wagner Rd. & .2
mi. E of Rock City Rd.

SUNNYSIDE Maryland Twp. Dist. 78
Sec. 8 E side of Adeline Rd. & .3
mi. N of Coffman Rd.



HOOSIER STREET Taylor Twp. Dist.
79 Sec. 12 W side of Hoosier Rd.
& .5 mi. S of Dugdale Rd. View W
Built ca. 1865. Closed ca. 1934.



CARTHAGE Taylor Twp. Dist. 80
Sec. 2 150 yards S of Flagg Rd. &
.55 mi. W of Daysville Rd. Looking
NE Cement slab was part of school.
Site is located between 2 private
drives, & 25 yards S of a private
home. Closed about 1950.

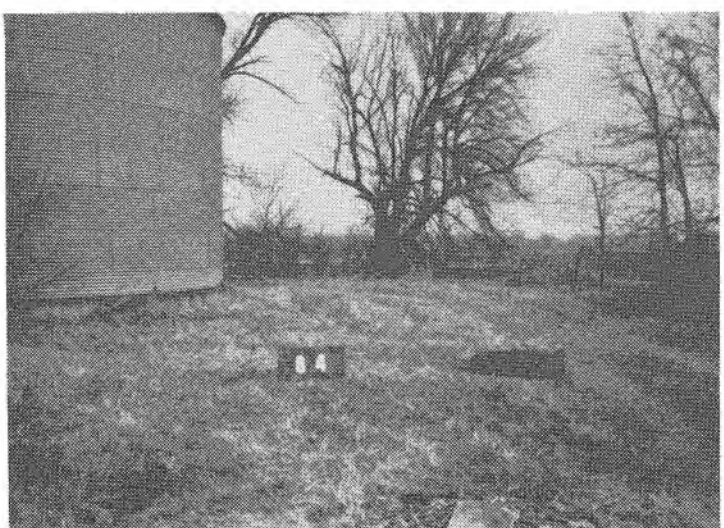
"Truancy", we "country kids" thought,
was a trait of "town kids." We
deemed it necessary, on occasion,
to be "absent." The only time the
teacher was absent was on one of
those high-drift blizzard mornings.



TEALS CORNER Taylor Twp. Dist. 81
Sec. 9 NW corner of Lowden & Flagg
Rds. int. Looking NW. Built in
1869. Closed about 1950.

LIGHT HOUSE Nashua Twp. Dist. 82
Sec. 25 NE corner of Lighthouse &
Daysville Rds. int.

NASHUA Nashua Twp. Dist. 83 Sec.
28 NW corner of Lowden & Lighthouse
Rds. int. LR 1946.



WATERTOWN Nashua Twp. Dist. 84 Sec.
24 NE corner of Prairie & Watertown
Rds. T-int. Looking NE Pump at right.
Building sold & moved to serve as East
Side Ch. E of Oregon. LR 1946.

DAYSVILLE Nashua Twp. Dist. 85 Sec.
14 N side of Honey Creek Rd & 150 yds.
E of Daysville Rd. LR 1946.

HONEY CREEK Nashua Twp. Dist. 86
Sec. 12 In Honey Creek, 1 block S of
Honey Creek Rd. & 1 block W of Marsh
Rd. (W side of street.) LR 1952.

PLEASANT HILL (Stone) Oregon Twp. Dist. 87 Sec. 2 W side of Black Hawk Rd. & .1 mi. N of IL 64. (A later 87 built at IL 64 & Daysville Rds. int.)(NE corner)



OREGON Oregon Twp. Dist. 88 Sec. 3 W side of 6th St. & 40 yds N of Washington St. (IL 64) Looking SE A bronze plaque (in front of numbers) was placed there on the school step in 1940 to mark the site of the first (one-room) school in Oregon (1839)

PLEASANT VALLEY Oregon Twp. Dist. 89 Sec. 6 W side of Gale Rd. & .7 mi. N of Pines Rd. LR 1947

PLEASANT GROVE (Joesten) Rockvale Twp. Dist. 90 Sec. 25 SE corner of Pleasant Grove & Black Hawk Rds. int. LR 1951.

BROOKLYN Rockvale Twp. Dist. 91 Sec. 22 E side of River Rd. & .3 mi. N of Spring Creek Rd. LR 1957.

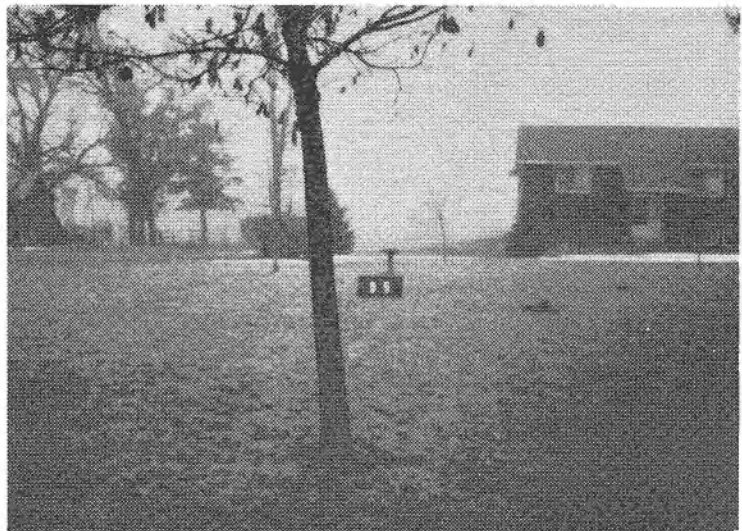


WAITE Rockvale Twp. Dist. 92 Sec. 16 N side of Town Hall Rd. & .5 mi. W of IL 2. Looking NW Bldg. there. Basememt served as town hall for the township. LR 1946



ROCKVALEHEIGHTS Rockvale Twp. Dist. 93 Sec. 29 NE corner of Silver Creek & Mud Creek Rds. T-int. Looking N Cyclone cellar at right. LR 1952

RIVERVIEW (Razorville, Osborne) Rockvale Twp. Dist. 94 Sec. 12 E side of Razorville Rd. & .5 mi. N of Acorn Rd. School originaally at W end of Razorville Rd., on River Rd. LR 1946.



JUNCTION Rockvale Twp. Dist. 95 Sec. 10 S side of Camling Rd. & .2 mi. W of IL 2. Bldg. gone. Looking S Road changed, school used to be on N side of road. Road went approx. where a house now stands.

SILVER CREEK Rockvale Twp. Dist. 96 Sec. 17 SW corner of West Grove & Silver Creek Rds. T-intersection.



LOUGHRIDGE school's cyclone-cellar is one of the few still intact (1990). This cellar faced the east. If Teacher deemed it necessary, the pupils took cover there.



BURR OAK was closed in 1926 making it the longest-standing after-closing original-site non-home school in the county. For the sites of the above, see the school-site pages.



STONE Rockvale Twp. Dist. 97 Sec. 4 S side of Town Line Rd. & .2 mi. E of Stone School Rd. Looking SW LR 1946.



MILL Byron Twp. Dist. 98 Sec. 26 N side of IL 72 & .8 mi. E of Conger Rd. Looking SW. LR 1947.

TRIUMPH Leaf River Twp. Dist. 99 Sec. 31 SW corner of IL 72 & Triumph Rd. int. Closed about 1945.

HOGAN Byron Twp. Dist. 100 Sec. 22 NW corner of Conger Rd. & Lightsville Rd. T-int. LR 1948.

MYRTLE Leaf River Twp. Dist. 101 Sec. 20 W side of Pecatonica Rd. & .5 mi. N of Lightsville Rd. LR 1947.

PRAIRIE VALLEY Leaf River Twp. Dist. 102 Sec. 18 W side of Triumph Rd. & .4 mi. S of Myrtle Rd.

OAK GROVE Byron Twp. Dist. 105 Sec. 13 SE corner of Oak Grove & Hoisington Rds. intersection.

BURR OAK (Gitchell) Byron Twp. Dist. 106 Sec. 10 N side of Oak Grove Rd. & .7 mi. W of Conger Rd. Brick ruins. Looking north. (p. 32)

MT. PLEASANT Leaf River Twp. Dist. 107 Sec. 5 NW corner of Pecatonica & Egan Rds. intersection. LR 1947

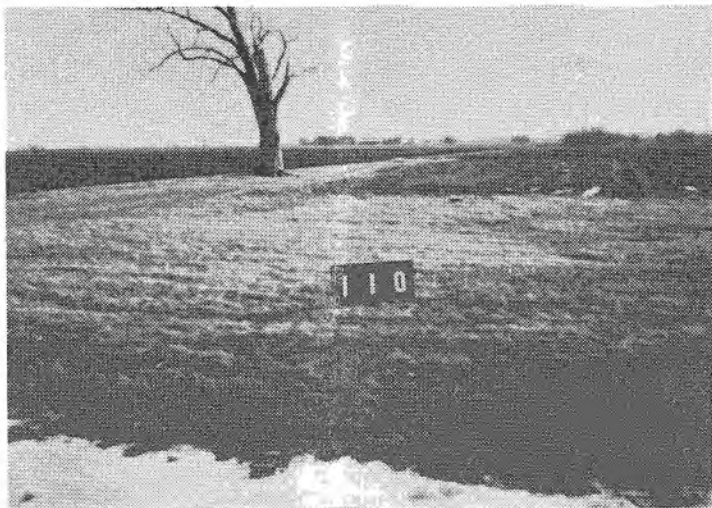


YORTY LaFayette Twp. Dist. 108 Sec. 10 W side of Chana Rd. & .3 mi. NW of IL 38. Vacant. Looking NW Before road change, school stood catty-cornered across T-int. (moved to present site as school) LR 1947



PRAIRIE STAR LaFayette Twp. Dist. 109 Sec. 5 NE corner of Prairie Star & Dugdale Rds. T-int. Looking NE. Beautiful name! LR 1951

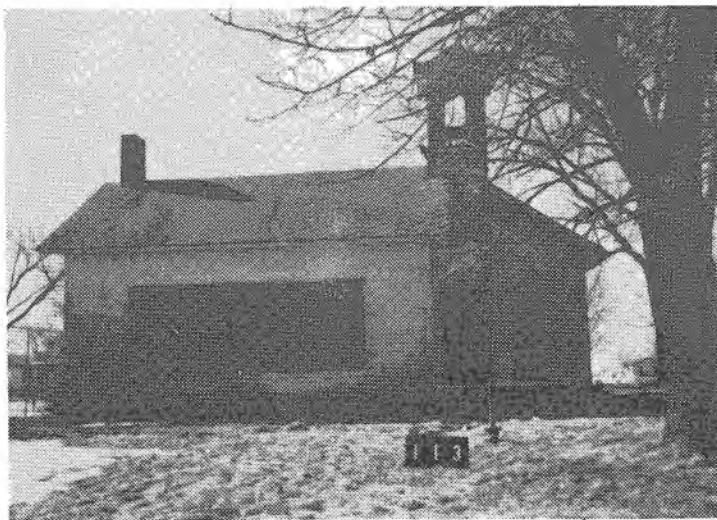
=====
 "My first year of teaching was spent at the LIMERICK school which was located on the Brick Road. It was the same year (1914-1915) that that road was built. And that was 75 years ago." Olive Stoffregen 1990
 =====



ANTIOCH LaFayette Twp. Dist. 110
Sec. 2 S side of Flagg Rd. & .2 mi.
W of Linscott Rd. Looking S LR 1950.

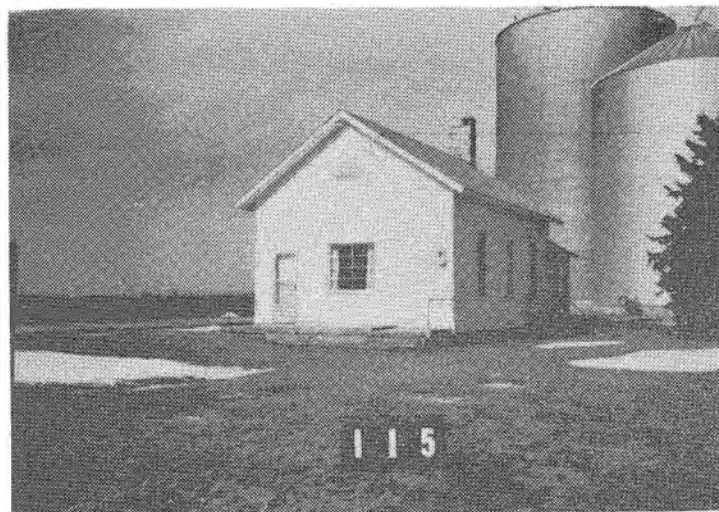
EUREKA Pine Rock Twp. Dist. 111
Sec. 35 SW corner of Husking Peg &
Sweeny Rds. int. LR 1947

HUSKING PEG Pine Rock Twp. Dist.
112 Sec. 28 NE corner of Rocky Hollow
& Husking Peg Rds. T-int. LR 1947.

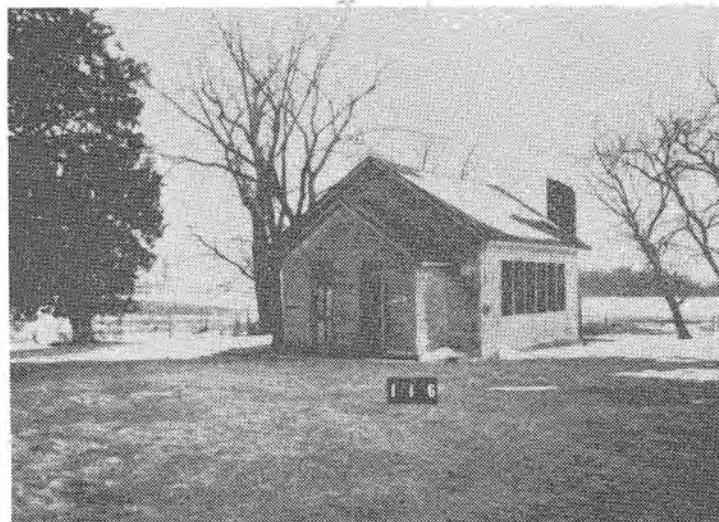


CHANA Pine Rock Twp. Dist. 113
Sec. 15 In Chana at School St. &
Pine Ave., SE corner. Looking W.
Built in 1883 to replace White Oak
school which stood .2 mi. E of
Chana Rd. on S. side of Grist Mill
Rd. (Last wooden two-room school
still standing in county.)

CYCLONE (Canfield) Pine Rock Twp.
Dist. 114 Sec. 17 SW corner of
Rocky Hollow & Honey Creek Rds. int.
(A cyclone destroyed Canfield school.
On re-build, name was changed to
Cyclone) LR 1948.



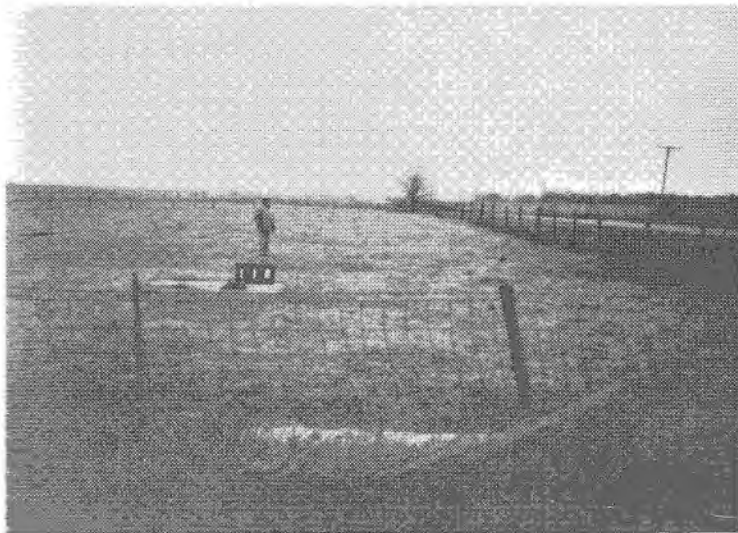
STONE HILL Pine Rock Twp. Dist.
115 Sec. 11 N side of Cottonwood
Rd. & .5 mi. E of Stone Hill Rd.
Looking NW. Now a farm-utility
building. LR 1951.



PAYNES POINT Pine Rock Twp. Dist.
116 Sec. 2 S side of Brick Road
& .2 mi. SE of Stillman Rd. Y-int.
View SE Bldg. there. LR 1957.

LIMERICK Pine Rock Twp. Dist. 117
Sec. 5 NE corner of Brick & Rocky
Hollow Rds. T-int. LR 1953.

=====
"The passage of the Survey Act of 1945
by the Illinois General Assembly
marked the beginning of the phasing
out of one-room schools. The last
one-room to close was GREEN PRAIRIE
in 1964. By that year, all of the
small districts had joined consol-
idated elementary districts. Big
yellow school buses became a familiar
sight on our country roads." BICENT-
ENNIAL HISTORY OF OGLE COUNTY 1976
=====



MERIDIAN (Harleman) Marion Twp.
Dist. 118 Sec. 36 NW corner of
Meridian & Lindenwood Rds. int.
View north.



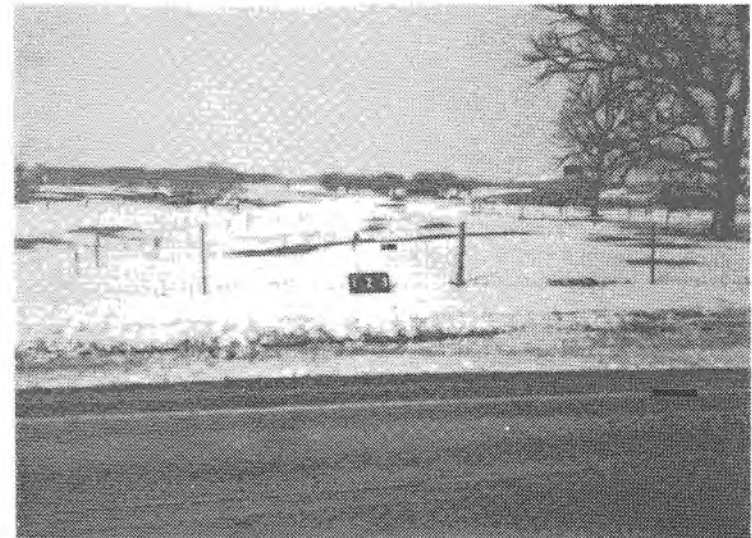
CROWELL Marion Twp. Dist. 121 Sec.
30 W side of Black Walnut Rd. & .3
mi. S of Holcomb Rd. View west.
(Stood left of newer home) Bldg.
gone. Last record 1951.



SLAGLE Marion Twp. Dist. 119 Sec.
27 W side of Stillman Rd. & .5 mi.
S of Holcomb Rd. View west. Bldg.
gone. Well casing in foreground.
(School stood in front of new home.)
Last record 1953.

MORRILL Marion Twp. Dist. 120 Sec.
29 W side of Morrill Road & .7 mi.
south of Holcomb Road.

=====
"In 1879 Prof. Edward Wells opened
his Teacher's Training School & School
of Individual Instruction on the
banks of the river in Oregon. It
was unique in that an individual
plan of schoolwork was adopted for
each student. Many of the teachers
in northern Illinois received their
education here until it closed in
1913." BICENT. HIST. OF OGLE CO. 1976
=====



STILLMAN VALLEY Marion Twp. Dist.
123 Sec. 1 (Early one-room). W side
of Stillman Rd. & 125 yards S of Hales
Corner Road. Looking west.

WHITAKER Marion Twp. Dist. 124 Sec.
5 NE corner of Whitaker & German
Church Rds. T-int. (An earlier
Whitaker area school was moved to
site of Ebenezer Reformed Church and
it served there as a church in the
early 1870's.)
=====

Attending school, for some pupils,
was about as well liked as standing out
in a hailstorm with no umbrella.
=====



Our Mother as school teacher at this school.
TAKEN IN 1901

STONE school Dist. 97 In 1864, the school site was in the NE corner of the James Cooling farm. This picture (taken in 1901) shows a school of stone construction. "Our Mother" was Amy Lutz.

CROWELL school
Dist. 121 (R.)
An excellent teacher and camera-person (Vera May Long) is reflected in the faces of these 1936 pupils. Along with the regular teaching duties, the teachers also served as janitors, furnace-persons, and ombudsman.

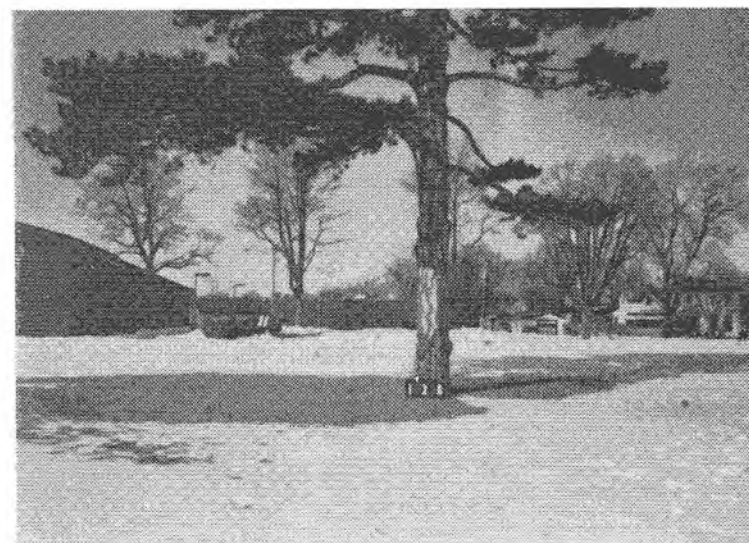
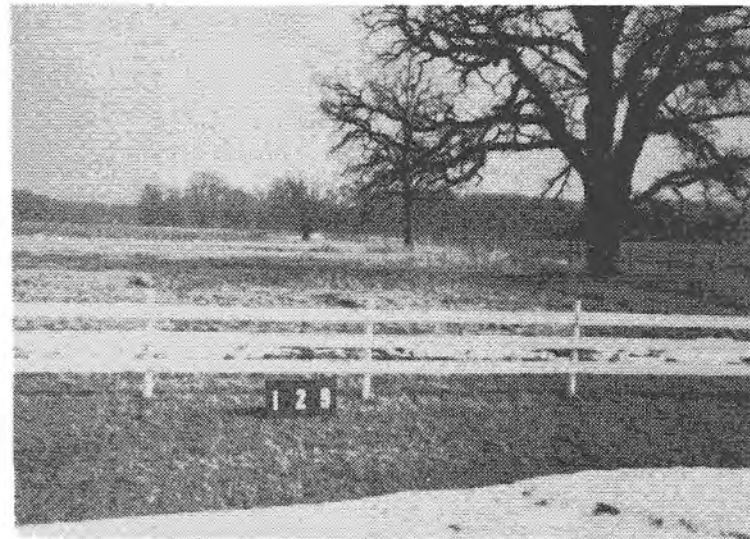


OAKLAND Byron Twp. (E) Dist. 127
Sec. 2 N side of McGregor Rd. & .3
mi. E of Weldon Rd. Looking NW.
Bldg. gone.



MOUTH OF STILLMAN Marion Twp. (N)
Dist. 125 Sec. 27 N side of Kish-
waukee Rd. & .5 mi. SW of Crestview
Rd. Bldg. gone, stood by numbers.
LR 1950.

MCCORMICK (Woodburn) Byron Twp. (E)
Dist. 128 Sec. 9 NE corner of
Kennedy Hill & Woodburn Rds. int.
Looking NE Bldg. moved catty-cornered
(stood right of numbers) across road.



BYRON Byron Twp. (E) Dist. 126
Sec. 32 Between Franklin & Wash-
ington Sts. & Main & 2nd Sts. View
W (An early multi-room stood back
of tree.)

UNION Byron Twp. (E) Dist. 129 Sec.
7 E side of Tower Rd. & .4 mi. N
of Oak Grove Rd. Looking east.

PLEASANT HILL Flagg Twp. Dist. 130
Sec. 36 NW corner of Steward Rd. &
So. Main St. intersection. LR 1948.

=====
"Miss Helen Stonick has been hired
as County Nurse. Physical exams will
be made by the Nurse, a school chart
made and filed, and as many defects
corrected as possible. The Nurse will
give her entire time to the rural
schools." ROCHELLE HERALD 1924
=====





ROCHELLE Flagg Twp. Dist. 131
Sec. 24 100 yards W of Main St. &
Ave. C T-int. Early one-room stood
near here "next to Flagg's home."
Bldg. gone. Looking north.



RANDALL Flagg Twp. Dist. 132
Sec. 28 S side of IL 38 & .2 mi.
E of Center Rd. View S LR 1946.



FISHER Flagg Twp. Dist. 133 Sec.
29 SE corner of IL 38 & Brooklyn Rds.
int. Looking SW LR 1948.

BIRDSELL (Birdsall) Flagg Twp. Dist.
134 Sec. 13 N side of Flagg Rd. & .2
mi. W of IL 251 Last record 1948.



FLAGG CENTER Flagg Twp. Dist. 135
Sec. 16 N side of Flagg Rd. & 100 yds.
E of Center Rd. View NE School front
stood back of present building front.
(Bldg. gone). LR 1962.

MERIDIAN Flagg Twp. Dist. 136 Sec.
18 NE corner of Flagg & Meridian Rds.
T-intersection. LR 1951

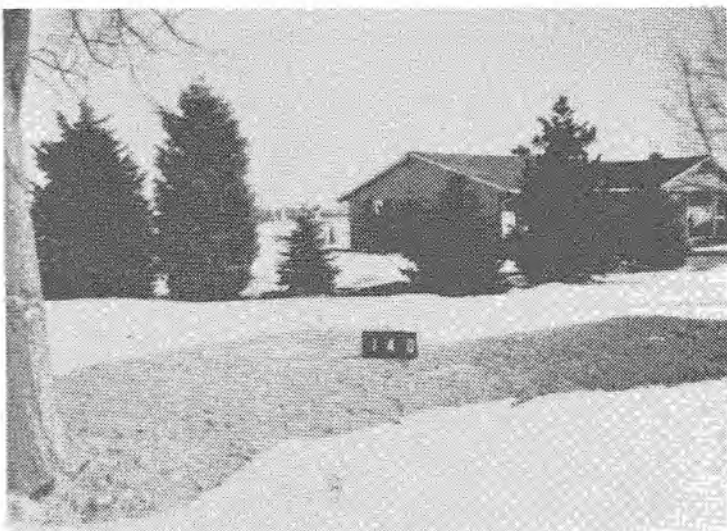
NEW CORN HILL Flagg Twp. Dist. 137
Sec. 1 W side of IL 251 & .2 mi. N of
Hemstock Rd.



SPRINGPORT Flagg Twp. Dist. 138 Sec.
3 N side of Hemstock Rd. & .2 mi. W
of Queens Rd. Looking N Bldg. gone.

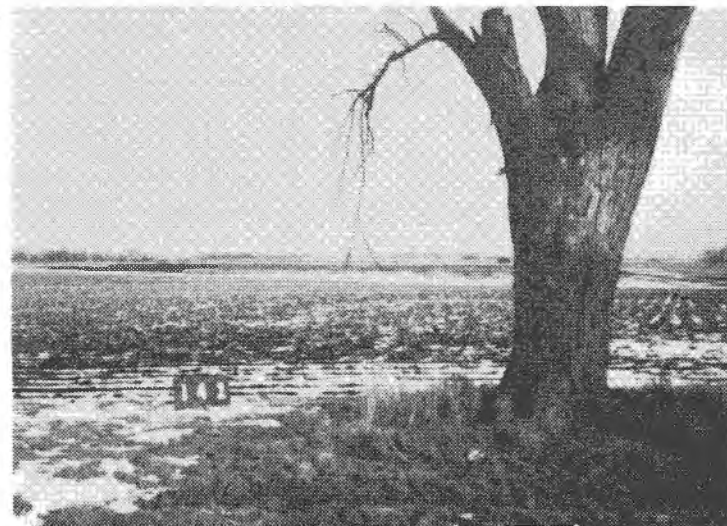


UNION CORNERS Flagg Twp. Dist. 139
Sec. 4 NW corner of Hemstock &
Center Rds. int. View N Bldg. gone.



HEMSTOCK Flagg Twp. Dist. 140
Sec. 8 SE corner of Hemstock &
Skare Rds. intersection. Looking
SE Bldg. gone LR 1957.

BRICK White Rock Twp. Dist. 141
Sec. 36 SW corner of IL 251 & Bethel
Rds. intersection.



BETHEL White Rock Twp. Dist. 142
Sec. 34 N side of Bethel Rd. & .2
mi. W of Kings Rd. Looking N LR 1921.



SPRING VALLEY White Rock Twp. Dist.
143 Sec. 30 NW corner of Cottonwood
& Skare Rds. int. Looking NW. Bldg.
gone. LR 1921.



KINGS White Rock Twp. Dist. 144 Sec.
27 In Kings, SW corner of School St
& 2nd. St. T-int. (or about 50 yards
S of 2nd St.) stood an early multi-
room. Looking west.

=====

The schools varied in sizes. To illustrate, we made some fairly accurate measurements of still standing schools. OAK RIDGE is 26' 6" wide, 36' 6" long, and 22' high. LOUGHRIDGE is 22' 3" wide, 34' 3" long, and 22' high. PAYNES POINT is 24' 4" wide, 30' 6" long, and 24' high. In a picture of the MORRILL school, it would appear that it was the smallest school in the county. However, after the turn of the century, that building was replaced.

=====

100 yards W of IL 251.



GIBSON White Rock Twp. Dist. 145
Sec. 20 At one time Post Rd. (.2
mi. N of IL 64) connected Skare Rd.
to White Rock Rd. The school stood
midway between the two latter roads.
(Stood on S side of road, W of a line
fence.) Looking E LR 1921.

LUDA White Rock Twp. Dist. 146
Sec. 13 NE corner of IL 251 &
Mowers Rd. int. (A Superior-rated
school) LR 1946.



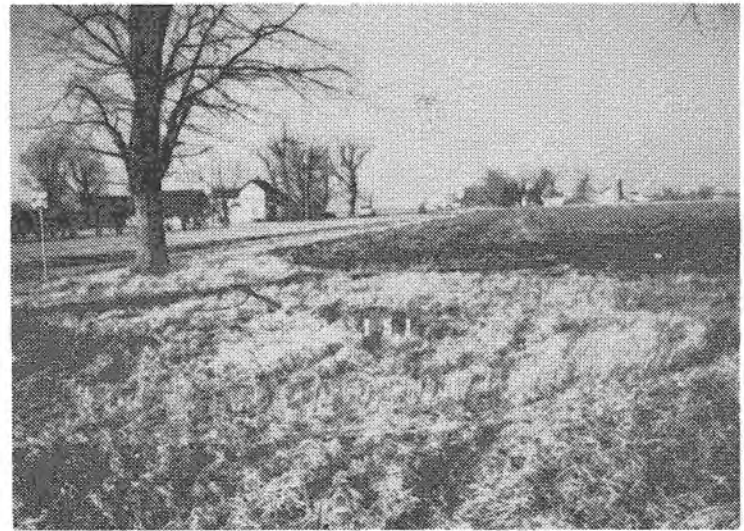
WHITE ROCK CENTER White Rock Twp.
Dist. 147 Sec. 16 NW corner of
Mowers & Church Rds. int. View NW.
(School lot is now cemetery addition)
LR 1921

WHITE ROCK White Rock Twp. Dist.
148 Sec. 9 E side of White Rock
Rd. & 100 yards S of Lindenwood Rd.
LR 1957

PHELPS White Rock Twp. Dist. 149
Sec. 1 N side of Lindenwood Rd. &



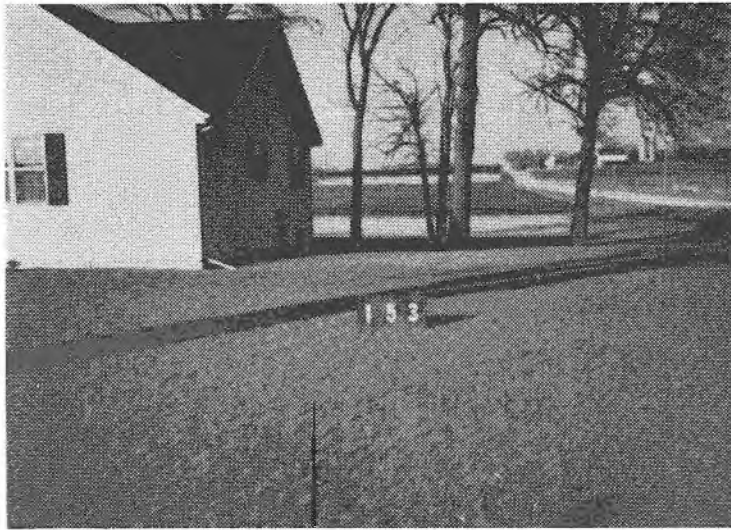
WILLOWHEAD (Willowhedge, Gates. Blind)
White Rock Twp. Dist. 150 Sec. 3
NE corner of Willowhead & Church Rds.
T-intersection. Looking E-NE.



BEACON Scott Twp. Dist. 151 Sec.
25 NE corner of IL 251 & Big Mound
Rd. int. Looking N Building gone.
Closed about 1942.

HOLCOMB Scott Twp. Dist. 152 Sec.
34 In Holcomb, at NE corner of Allen
& 2nd Ave. intersection.

=====
"But if the country schools excelled
at anything, it was spelling. Class-
room spelldowns and interschool spell-
ing contests gave a competitive spar-
kle to the mundane subject, and years
later tricksters like "phthisis" and
"assessable" were child's play to the
spell-down grad." BUILDING FOR THE
CENTURIES John H. Keiser
=====



BEACH Scott Twp. Dist. 153 Sec. 29 NW corner of Big Mound & White Rock Rds. int. Looking north. Bldg. gone. LR 1948.

YOUNGS Scott Twp. Dist. 154 Sec. 31 NE corner of Holcomb & Meridian Rds. intersection. Closed ca. 1939.

DAVIS JUNCTION Scott Twp. Dist. 155 Sec. 22 NE corner of Elm & Lincoln Sts. Was early multi-room school. Berkshire school preceded D.J. school. It stood NE of town, .5 mi. E of Junction Rd. on side of road (if Utility Rd. continued to IL 251).



WILBUR Scott Twp. Dist. 156 Sec. 20 SE corner of IL 72 & Armour Rd. T-int. Some ruins there. View N-NE LR 1951

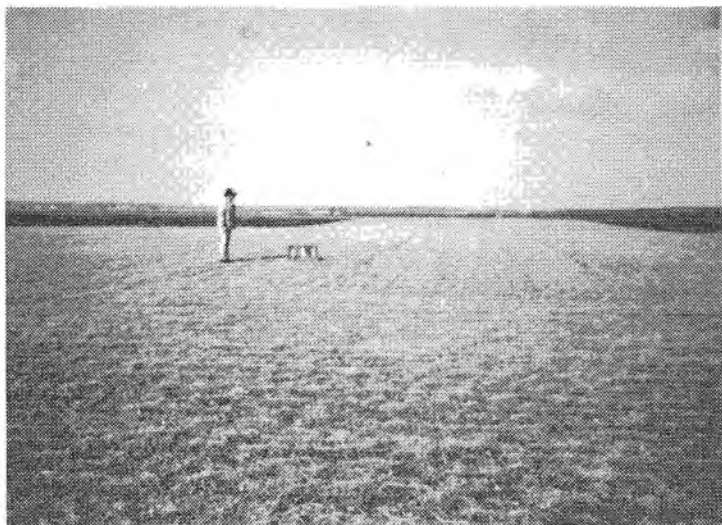
Teacher said; "Making the chalk squeal like that on the blackboard is totally uncalled for!!" We agreed.

SUPERINTENDENTS OF OGLE COUNTY SCHOOLS

Leonard Andrews -1837
 William Walmsley -1841
 Silas St. John Mix -1843
 S.N. Sample -1845
 N.W. Wadsworth -1847
 Lyman Hall -1849
 Daniel Pinckney -1851
 N.P. Brown -1855
 Arnold E. Hurd -1857
 Eldridge W. Little -1859
 Joseph M. Stanford -1862
 William G. Randall -1863
 Edward L. Wells -1865
 John T. Ray -1877
 Fernando Sanford -1882
 Carrie R. Veazie -1886
 Samuel B. Wadsworth -1887
 Joseph M. Piper -1888
 Emery I. Neff -1902
 Anna B. Champion -1906
 John E. Cross -1910
 Leland Hanson -1926
 George F. Cann -1927 and
 Wilbur L. Pickering who served from 1934 to 1968, and therefore was in office at the closing of the last one-room school in Ogle County, Illinois.

"Every person having control of any child between the ages of 7 and 14 years shall annually cause such child to attend at least 16 weeks (12 weeks of which shall be consecutive), some public or private school, which time, for pupils under 10 years of age, shall commence with the beginning of the first term of the school year for pupils above 10 years or as soon thereafter as due notice shall be served upon the person having such control of his duty under this act."
 BYRON EXPRESS 1897

"Editor ROCHELLE REGISTER: Will you please announce to your readers by publishing this article that I will be a candidate for the office of School Superintendent, and respectfully ask the influence of my friends to assist me in securing the nomination at the county convention.
 E.L. Wells September 1, 1865 Dement
 (Creston), Illinois" ROCHELLE REGISTER 1865



SCOTT Scott Twp. Dist. 157 Sec. 2
N side of Scott Rd. & .5 mi. E of
Junction Rd. View north. LR 1946.



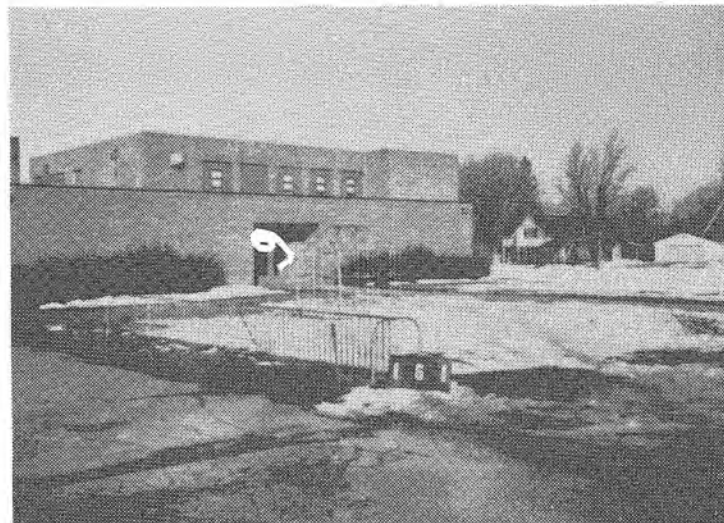
LITTLE MOUND Scott Twp. Dist. 158
Sec. 5 NW corner of Scott & Rothwell
Rds. intersection. Looking north.
Closed about 1915.



GOVIG Dement Twp. Dist. 159

Sec. 36 E side of Woodlawn & Ritchie
Rds. T-int. View E (School would
now hide bush in background.) LR 1950.

WILLOW CENTER Dement Twp. Dist. 160
Sec. 28 W side of Mulford Rd. & .7
mi. N of Ritchie Rd. LR 1960.



CRESTON Dement Twp. Dist. 161 Sec.
23 In Creston, SW corner of Center
& South Sts. int. Looking NW Multi-
room stood approx. where 1-story
addition stands. Early one-room
stood S of Woodlawn Cem. N of Creston.
(called Brodies Grove).

HARR Dement Twp. Dist. 162 Sec. 20
S side of IL 38 & .2 mi. E of Dement
Rd. Last record 1948.



SMITH Dement Twp. Dist. 163 Sec. 9
W side of Mulford Rd. & .5 mi. N of
Twombly Rd. Looking NW Bldg. gone.
LR 1959.

COUNTRYMAN Lynnville Twp. Dist. 164
Sec. 34 NW corner of Chamberlain &

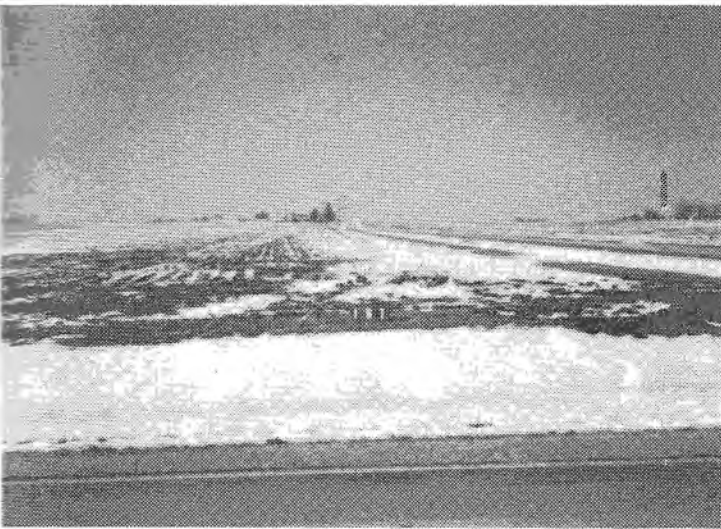
Gillis Rds. int. LR 1950

FLETCHER Lynnville Twp. Dist. 165
Sec. 29 W side of Lynnville Rd. &
.5 mi. N of Bethel Rd. LR 1947



GREENWAY Lynnville Twp. Dist. 168
Sec. 2 NW corner of Lindenwood &
Woodlawn Rds. intersection. Looking
north. Last record 1946.

CHAMBERLAIN Lynnville Twp. Dist.
166 Sec. 14 NE corner of Chamber-
lain & Mowers Rds. intersection.
Looking NE LR 1948.



COOK (Murphy) Lynnville Twp. Dist.
169 Sec. 3 SE corner of Lindenwood
& Mulford Rds. int. Looking SE
School moved to center background as
farm building. LR 1946

MOORE Lynnville Twp. Dist. 167
Sec. 20 SW corner of Lynnville &
Mowers Rds. int. Looking W Closed
about 1947.

=====

A common practice of teachers in
conducting classes for each grade
was to have the pupils in that grade
move up to a bench close to Teacher's
desk, and when the class or lesson
ended, the kids returned to their
desks. Then the next grade moved
up to the "hot seat." Albeit this
was a welcome progression on a cold
northern-Illinois day; a hot seat.

=====



LINDENWOOD Lynnville Twp. Dist. 170 Sec. 5 W side of Main St., N of present school (or 1 block W of Lynnville Rd.) Early multi-room. Looking west.



BENNETT (Porter) Monroe Twp. Dist. 171 Sec. 26 SE corner of Bennett & Quarry Rds. int. Looking east.

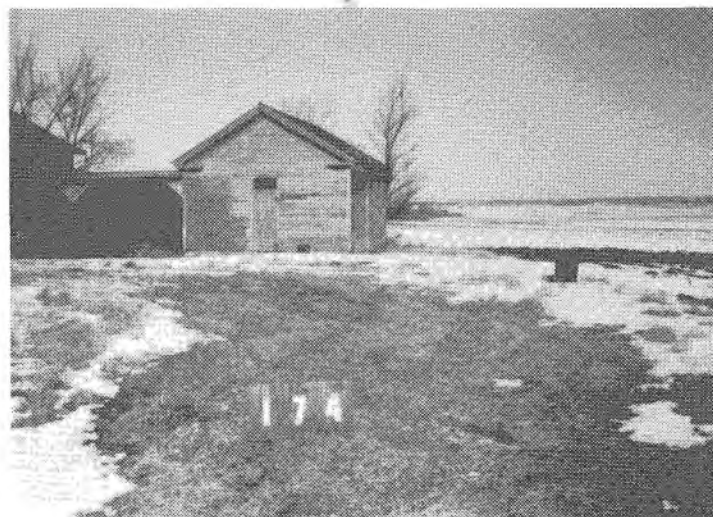


WARREN Monroe Twp. Dist. 172 Sec. 32 SE corner of Kilbuck & Big Mound Rds. int. Looking east.

=====
 "The first school ever taught in this county was at O.W. Kellogg's house in Buffalo Grove in the winter of 1834-5 by Simon Fellows. In 1836, the building now occupied by the United Brethren was erected for the double-purpose of a church and school-house -- being the first erected anywhere in this vicinity for educational purposes. In the winter of 1836, there was a singing school in this school-house." HISTORY OF OGLE COUNTY, ILL. Henry R. Boss 1859
 =====



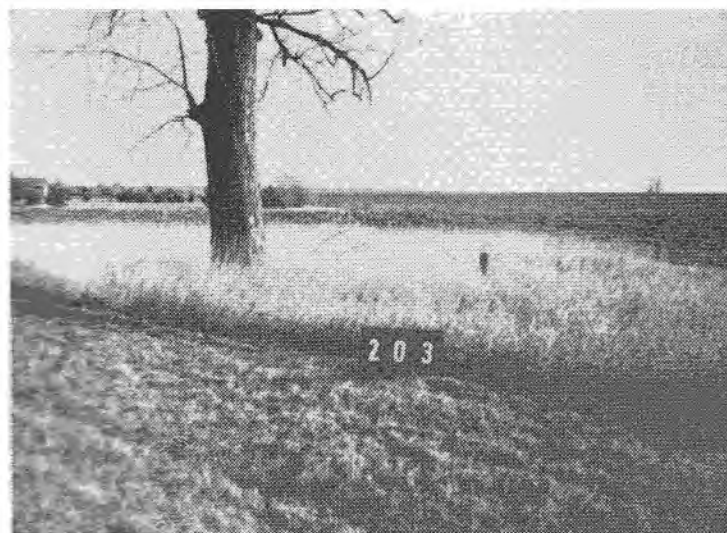
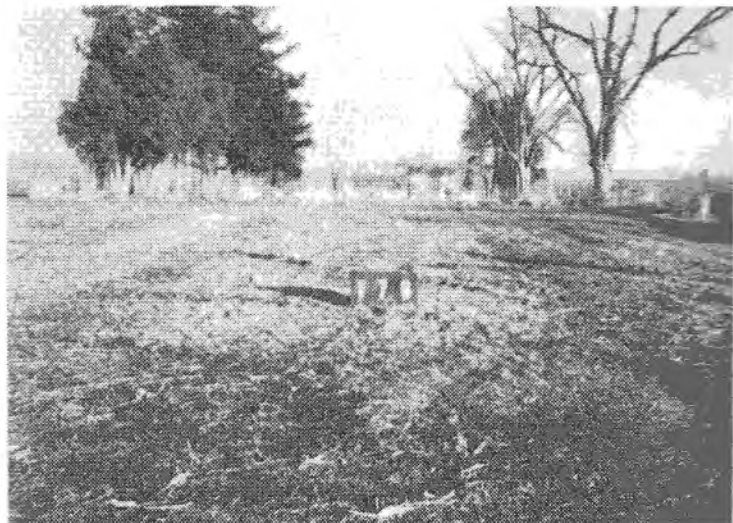
MONROE CENTER Monroe Twp. Dist. 173 Sec. 21 W side of West St. & one-half block S of IL 72. Looking W Combined-grades school stood back of numbers. (Multi-room.)



DUTCHTOWN Monroe Twp. Dist. 174 Sec. 13 N side of Crill Rd. & .7 mi. SE of Willoughby Rd. Looking N Original school at right, used as farm building.



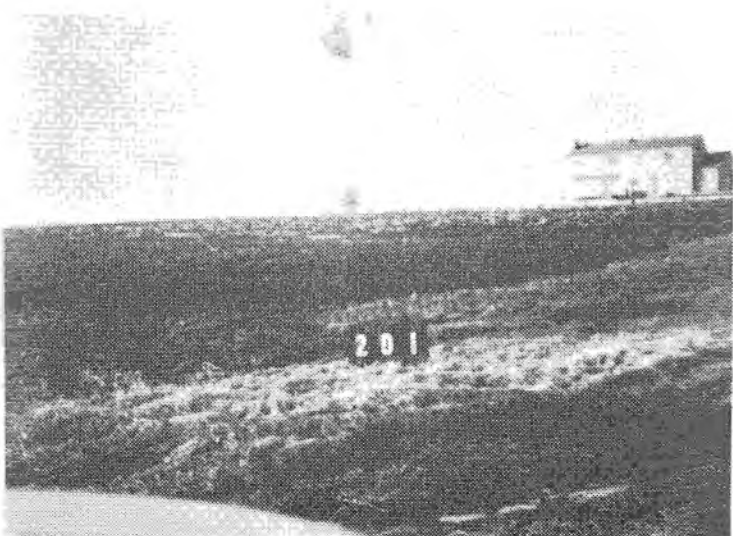
CRILL Monroe Twp. Dist. 175 Sec. 15 N side of Crill Rd. & .2 mi. W of Perryville Rd. Looking north.



MAPLE GROVE Marion Twp. (N) Dist. 203 Sec. 24 E side of Kishwaukee Rd. & .2 mi. SW of Meridian Rd. View E.

KILLBUCK (Kilbuck) Monroe Twp. Dist. 176 Sec. 7 NE corner of Kilbuck & Crill Rds. T-int. Looking east.

VOGT Monroe Twp. Dist. 177 Sec. 2 NE corner of Perryville & McNeal Rds. intersection.



FAIRVIEW Byron Twp. Dist. 204 Sec. 2 SE corner of Montague & Conger Rds. int. Looking E Last record 1946.

WOOSUNG Woosung Twp. Dist. 205 Sec. 11 E side of IL 26-52 at T-int. (NE corner) with Market St. Early multi-room.

FILE Monroe Twp. Dist. 201 Sec. 5 W side of Limestone Rd. & .5 mi. N of McNeal Rd. Bldg. gone. View NW.

Most schools put on a Christmas program on an evening shortly before December 25. This meant the teacher was the role caster, director, prop man, coach, and the final job on "the night" was to be the prompter. Dialogues, recitations, and songs had to be memorized by the children. The teacher hoped for something more than an oration delivered in a monotone, or that total amnesia had set in.

RIVERSIDE Taylor Twp. Dist. 207 Sec. 7 E side of Lost Nation Rd. & .1 mi. NW of Flagg Rd. A Superior-rated school

FLAGG Flagg Twp. Dist. 211 Sec. 32 W side of Grange Rd. & 100 yards N of Titus Road. Last record, 1960.

Many former "one-roomers" would like to have seen this question on the 1990 census; "How many in the household have attended country schools?"

ALPHABETICAL LIST OF OGLE COUNTY, ILLINOIS SCHOOL DISTRICTS OF THE PAST

SCHOOL	Dist. No.	SCHOOL	Dist. No.	SCHOOL	Dist. No.
ADELINE	-74	EXCELSIOR	-29	MCCORMICK	-128
ANTERIOR	-51	FAIRVIEW	-49	MERIDIAN	-118
ANTIOCH	-110	FAIRVIEW	-68	MERIDIAN	-136
BAILEYVILLE	-46	FAIRVIEW	-204	MILL	-98
BARCLAY	-1	FILE	-201	MONROE CENTER	-173
BEACH	-153	"FIRST"	-pre 109	MOORE	-16
BEACON	-151	FISHER	-133	MOORE	-167
BENNETT	-171	FLAGG	-211	MORRILL	-120
BERKSHIRE	-pre 155	FLAGG CENTER	-135	MT. MORRIS	-61
BETHEL	-142	FLETCHER	-165	MT. PLEASANT	-107
BIRDSALL	-134	FORRESTON	-40	MT. VERNON	-9
BLACK WALNUT	-122	GATES	-150	MOUTH OF STILLMAN	-125
BLIND	-150	GIBSON	-145	MUD CREEK	-72
BRAND	-25	GITCHELL	-106	MURPHY	-169
BRICK	-26	GOVIG	-159	MYRTLE	-101
BRICK	-141	GRADATUM	-24	NAME UNKNOWN	-59
BRODIES GROVE	-pre 161	GRAND DETOUR	-47	NASHUA	-83
BROOKLYN	-91	GRAVEL HILL	-11	NEW CORN HILL	-137
BROOKVILLE	-5	GRAVEL PIT	-45	NEW JUNCTION	-67
BUFFALO GROVE	-23	GREEN PRAIRIE	-43	NORTH GROVE	-76
BURR OAK	-6	GREENWAY	-168	OAK GROVE	-105
BURR OAK	-106	HALDANE	-32	OAKLAND	-127
BYRON	-126	HARLEMAN	-118	OAK RIDGE	-50
CANADA		HARMONY HILL	-53	OAK RIDGE	-72
SETTLEMENT	-27	HARR	-162	OREGON	-88
CANFIELD	-pre 114	HEMSTOCK	-140	OSBORNE	-94
CARTHAGE	-80	HENRY	-18	PAYNES POINT	-116
CEDAR BLUFF	-69	HICKORY RIDGE	-48	PHELPS	-149
CENTER	-54	HIGHLAND	-52	PINE CREEK	-58
CENTER	-66	HILLSDALE	-57	PLEASANT GROVE	-90
CENTER HILL	-7	HOGAN	-100	PLEASANT HILL	-10
CHAMBERLAIN	-166	HOLCOMB	-152	PLEASANT HILL	-39
CHAMBERS GROVE	-8	HONEY CREEK	-86	PLEASANT HILL	-87
CHANA	-113	HOOSIER STREET	-79	PLEASANT HILL	-130
COLUMBIAN	-55	HUSKING PEG	-112	PLEASANT VALLEY	-89
COOK	-169	JOESTEN	-90	POLO	-22
COON CREEK	-65	JUDSON	-20	PRAIRIE DELL	-12
COTTAGE HILL	-21	JUNCTION	-95	PRAIRIE STAR	-109
COUNTRYMAN	-164	KEEDY	-60	PRAIRIE VALLEY	-102
CRESTON	-161	KILLBUCK	-176	RANDALL	-132
CRILL	-175	KINGERY	-17	RAZORVILLE	-94
CROWELL	-121	KINGS	-144	RIVERSIDE	-207
CYCLONE	-114	LAGRANGE	-15	RIVERVIEW	-94
CYCLONE HEIGHTS	-42	LEAF RIVER	-70	ROCHELLE	-131
DAVIS JUNCTION	-155	LIGHT HOUSE	-82	ROCKVALE HEIGHTS	-93
DAYSVILLE	-85	LIGHTSVILLE	-71	SCOTT	-157
DONALDSON	-2	LIMERICK	-117	SILICA	-59
DOTY	-19	LINDENWOOD	-170	SILVER CREEK	-96
DUTCHTOWN	-174	LITTLE MOUND	-158	SLAGLE	-119
EAGLE POINT	-3	LOUGHRIDGE	-56	SMITH	-163
EGAN	-75	LUDA	-146	SPRINGPORT	-138
ELDORADO	-30	MAPLE GROVE	-63	SPRINGVALE	-33
EUREKA	-28	MAPLE GROVE	-203	SPRING VALLEY	-143
EUREKA	-111	MAPLE HILL	-44	STILLMAN VALLEY	-123
EVERGREEN	-17	MARR	-37	STONE	-87

ALPHABETICAL LIST OF SCHOOL DISTRICTS OF THE PAST (cont.)

SCHOOL	Dist. No.	SCHOOL	Dist. No.	SCHOOL	Dist. No.
STONE	-97	VICTORY	-62	WHITE ROCK	-148
STONEBRAKER	-64	VOGT	-177	WHITE ROCK CENTER	-147
STONE HILL	-115	WAGNER	-77	WILBUR	-156
SUMMER HILL	-38	WAITE	-92	WILLOW CENTER	-160
SUNNYSIDE	-78	WARREN	-172	WILLOWHEAD	-150
TEALS CORNER	-81	WATERTOWN	-84	WILLOWHEDGE	-150
TRIUMPH	-99	WEST BRANCH	-31	WOODBURN	-128
UNION	-13	WEST GROVE	-34	WOOSUNG	-205
UNION	-60	WHITAKER	-124	YORTY	-108
UNION	-129	WHITE EAGLE	-73	YOUNGS	-154
UNION CORNERS	-139	WHITE OAK	-41		
UNITY	-14	WHITE OAK	-pre 113		

#####

ACKNOWLEDGEMENTS

Especially, we want to thank Lawrence B. Jacobs for his ubiquitous assistance, both "in the field" and "in the office." In making our way (walkers we) to the site of the "first" Ogle school, we actually crossed the proverbial "icy stream" (Grove Creek). By the way, we took the numbered pictures in the months of January, February, and March of 1990.

Special thanks also to; Raymond Buker (posthumously), Frances Roberta Jacobs, Vonnie Dixon Kehoe, Armour Van Briesen, and Vera May Long Ziegler (posthumously).

For acts of assistance, thanks also to; C.V. Atchison, Venice Bruns, Lois Carpenter Cline, Clifford Craven, Alice Wernick Fulton, Gladys Hersch Hansen, Effie Wernick Jacobs, Marvin A. Jacobs, Wayne King, Jim Meissen, Esther Link Mennenga, Ruth Ebens Miller, Perry Peters, Carolyn Grisham Ramsey, and Doris Glade Vogel, C.G.R.S.

And to all those Ogle countians who helped "point the way" to "their" school; Thanks.

=====
 "The one-teacher school system, as frequently maintained, has served humanity long and well. But it has served its day. It belongs, not to the present with its many urgent demands, but to the past." COUNTRY LIFE AND THE COUNTRY SCHOOL Mabel Carney 1912
 =====